

# TOWNSHIP 22 SOUTH, RANGE 6 WEST, OF THE WILLAMETTE MERIDIAN, OREGON

## DEPENDENT RESURVEY

FILED  
Date: 4/17/2013 By: JC  
This survey consists of:  
Map: PLAT 2013-1; T22-6  
Narrative: VOL. 58 PAGES  
Corner Rpt: 22978 - 22993

DOUGLAS COUNTY  
SURVEYOR

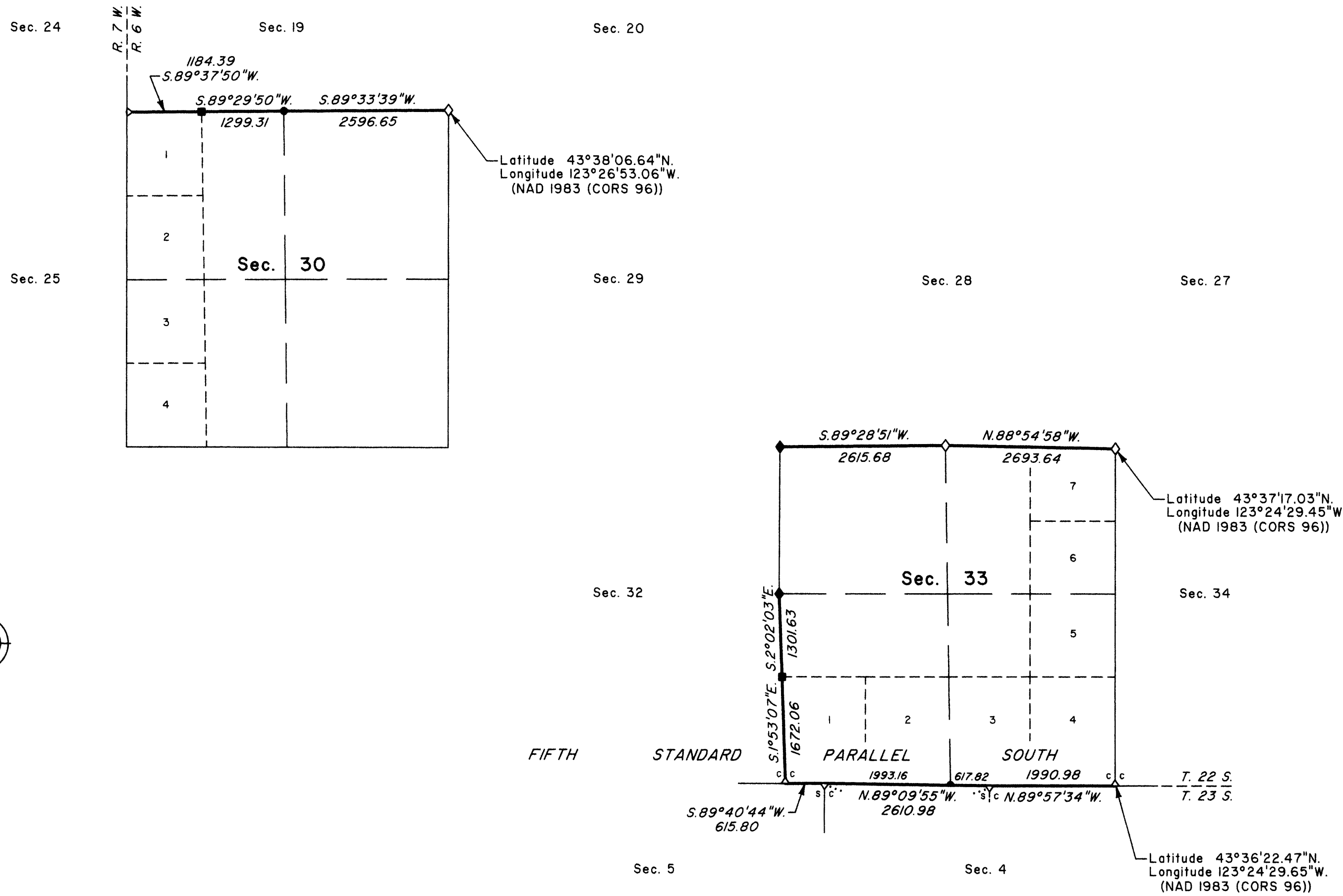
A history of surveys, corner descriptions, and other relevant information are contained in the field notes.

This plat represents the dependent resurvey of portions of the south boundary (Fifth Standard Parallel South) and subdivisional lines, designed to restore the corners in their true original locations according to the best available evidence, Township 22 South, Range 6 West, Willamette Meridian, Oregon.

The lottings and areas are as shown on the plat approved March 25, 1898.

Survey executed by A. Bert Skeesick, Cadastral Surveyor, beginning June 19, 2012, and completed July 26, 2012, pursuant to special instructions approved March 14, 2012, for Group No. 2653, Oregon.

OFFICIALLY FILED: 3/5/2013



**LEGEND**

- ◊ Original corner previously remonumented
- ◆ Original corner remonumented this survey
- Corner previously established or reestablished; remonumented this survey
- Corner established or reestablished this survey

UNITED STATES DEPARTMENT OF THE INTERIOR  
BUREAU OF LAND MANAGEMENT  
Portland, Oregon

This plat is strictly conformable to the approved field notes, and the survey, having been correctly executed in accordance with the requirements of law and the regulations of this Bureau, is hereby accepted.

For the Director  
*Mary J. M. Hartzel*  
Chief Cadastral Surveyor of Oregon

*February 22, 2013*  
Date

