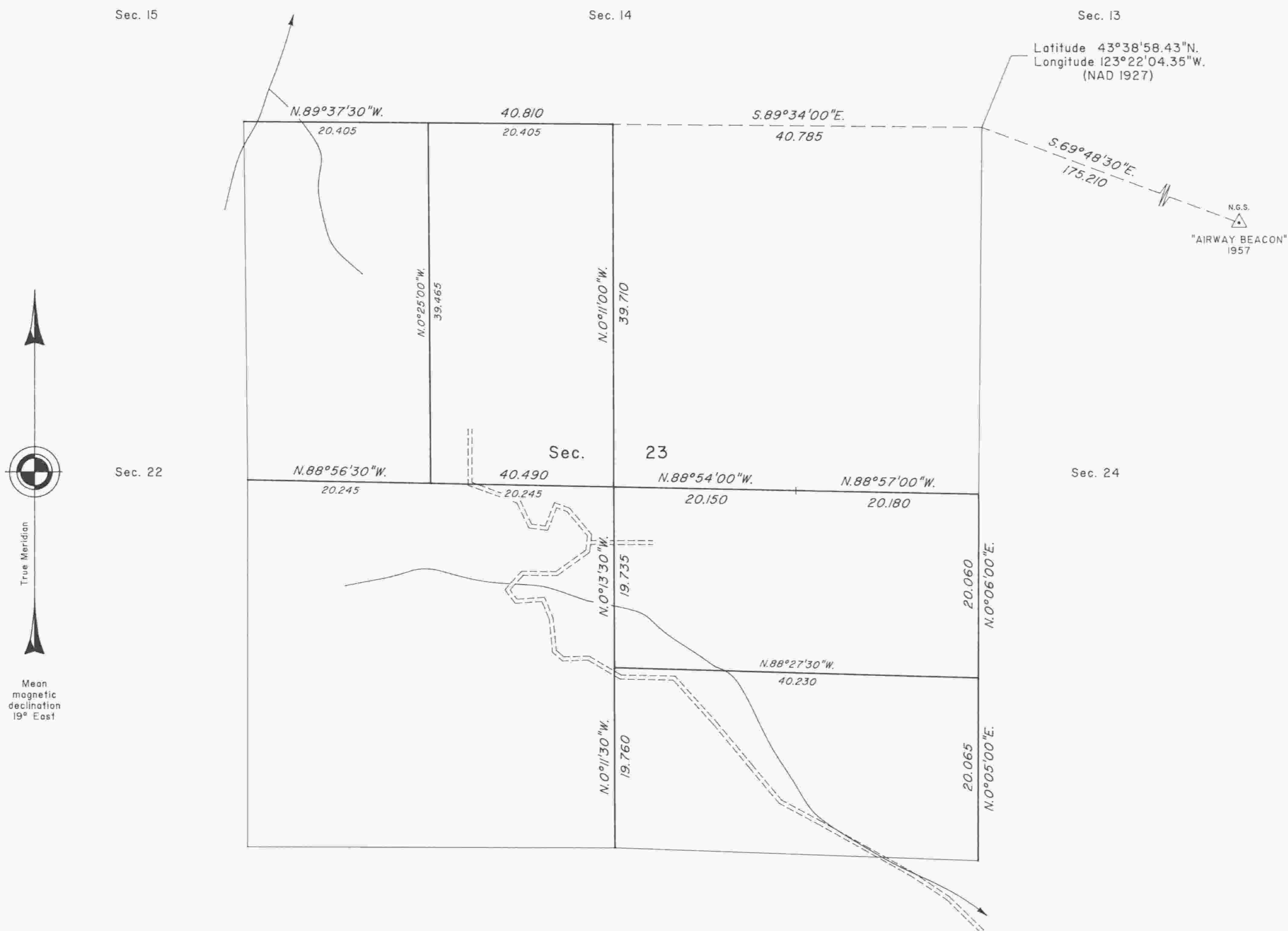


TOWNSHIP 22 SOUTH, RANGE 6 WEST, OF THE WILLAMETTE MERIDIAN, OREGON

DEPENDENT RESURVEY AND SUBDIVISION OF SECTION 23



A history of surveys is contained in the field notes.

This plat represents a dependent resurvey of a portion of the subdivisional lines, T. 22 S., R. 6 W., Willamette Meridian, Oregon, designed to restore the corners in their true original locations according to the best available evidence, and the subdivision of section 23.

The lottings and areas are as shown on the plat approved February 20, 1856.

The survey was executed by Dale T. Bedell, Cadastral Surveyor, beginning July 19, 1993, and completed August 24, 1993, pursuant to Special Instructions dated June 30, 1993, under Group Number 1702, Oregon.

Timber in this area consists of fir, cedar, hemlock, pine, yew, alder, cherry, maple, oak, madrone, willow, ash, and chinquapin.

The tie to the geodetic control station is reported as mean bearing and sea level distance.

UNITED STATES DEPARTMENT OF THE INTERIOR
BUREAU OF LAND MANAGEMENT

Portland, Oregon October 3, 1995

This plat is strictly conformable to the approved field notes, and the survey, having been correctly executed in accordance with the requirements of law and the regulations of this Bureau, is hereby accepted.

For the Director

Wayne M. Gardner

Chief Cadastral Surveyor of Oregon