

TOWNSHIP 22 SOUTH, RANGE 6 WEST, OF THE WILLAMETTE MERIDIAN, OREGON.

DEPENDENT RESURVEY AND SUBDIVISION OF SECTION 17

This plat represents a dependent resurvey of a portion of the subdivisional lines, and a portion of the claim lines, designed to restore the corners in their true original location according to the best available evidence, and the subdivision of section 17, T. 22 S., R. 6 W., Willamette Meridian, Oregon.

Excepting as new or modified vacant subdivisions as shown hereon, the lottings and areas are as shown on the plats approved February 20, 1856; May 20, 1858; April 26, 1872; and March 25, 1898.

A portion of the subdivisional lines was surveyed by Harvey Gordon and Charles T. Gardner, in 1856.

A portion of the subdivisional lines was surveyed by William H. Byars, in 1871.

The remaining subdivisional lines were surveyed by Winfield S. Chapman and Carl S. Nicklin, in 1897. At this time, Chapman and Nicklin dependently resurveyed the line between sections 17 and 20.

A portion of the subdivisional lines was dependently resurveyed by Donald R. Beck, in 1963.

The boundaries of the Joseph Daisley Donation Land Claim No. 37, located in sections 7, 8, and 17, were surveyed by Dennis Hathorn, in 1857.

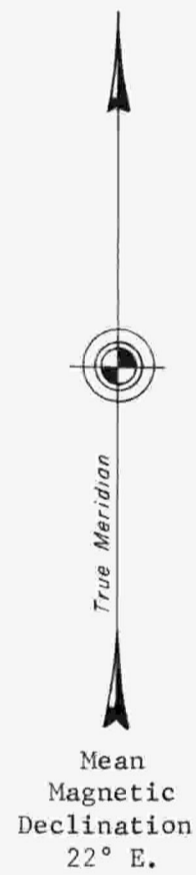
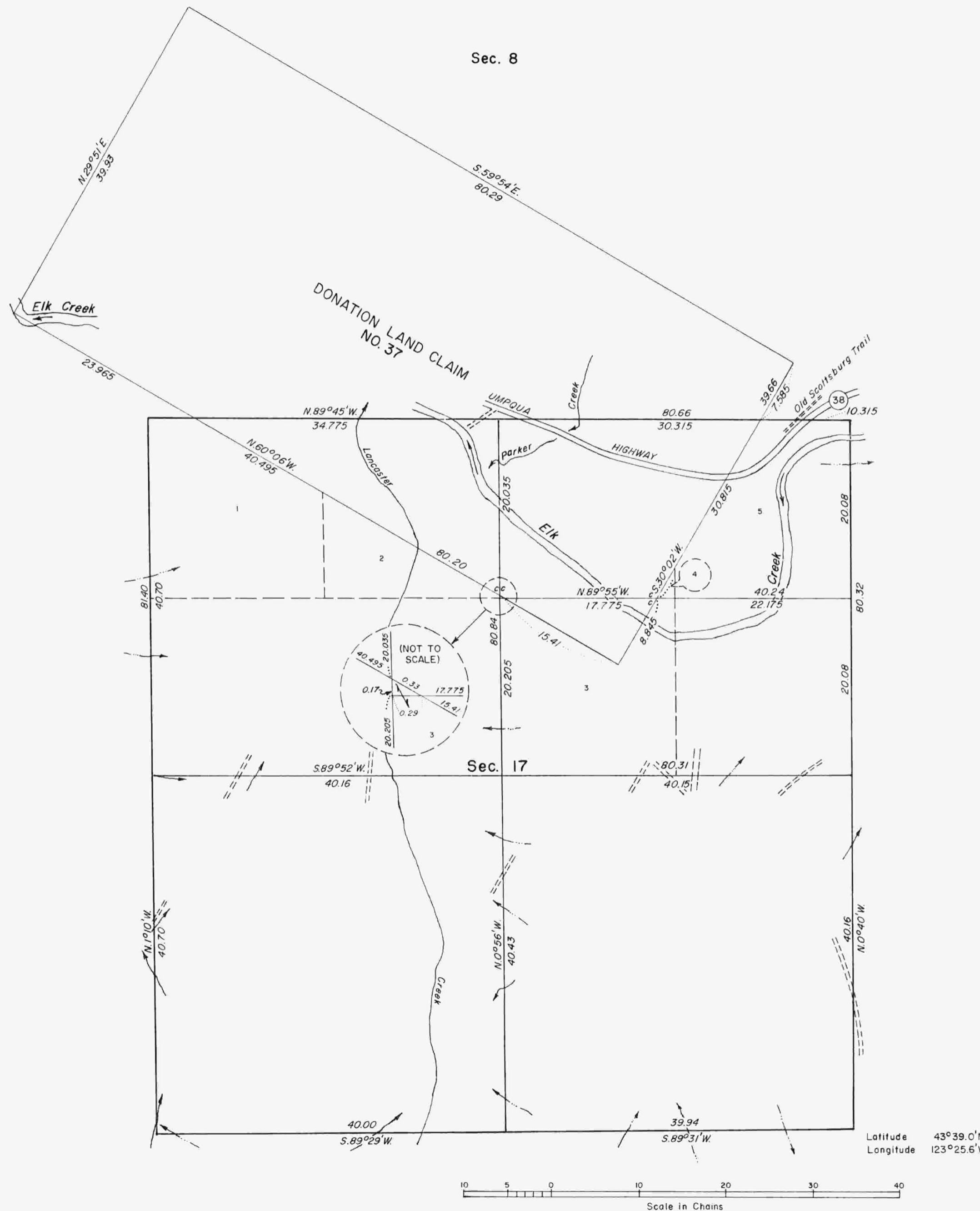
The resurvey and subdivision of section were executed by James E. Jelley, Cadastral Surveyor, from April 26, 1976, through June 11, 1976, under Special Instructions dated April 19, 1976, which provide for the surveys included under Group No. 891.

UNITED STATES DEPARTMENT OF THE INTERIOR
BUREAU OF LAND MANAGEMENT
Washington, D.C. December 28, 1978

This plat is strictly conformable to the approved field notes, and the survey, having been correctly executed in accordance with the requirements of law and the regulations of this Bureau, is hereby accepted.

For the Director

Bernard W. Jelley
Chief, Division of Cadastral Survey



Timber in this area consists of fir, cedar, hemlock, chinquapin, myrtle, alder, madrone, maple, and oak.