

TOWNSHIP 22 SOUTH, RANGE 6 WEST, OF THE WILLAMETTE MERIDIAN, OREGON.

DEPENDENT RESURVEY AND SUBDIVISION

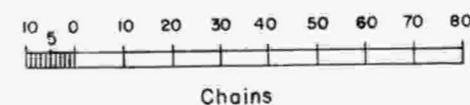
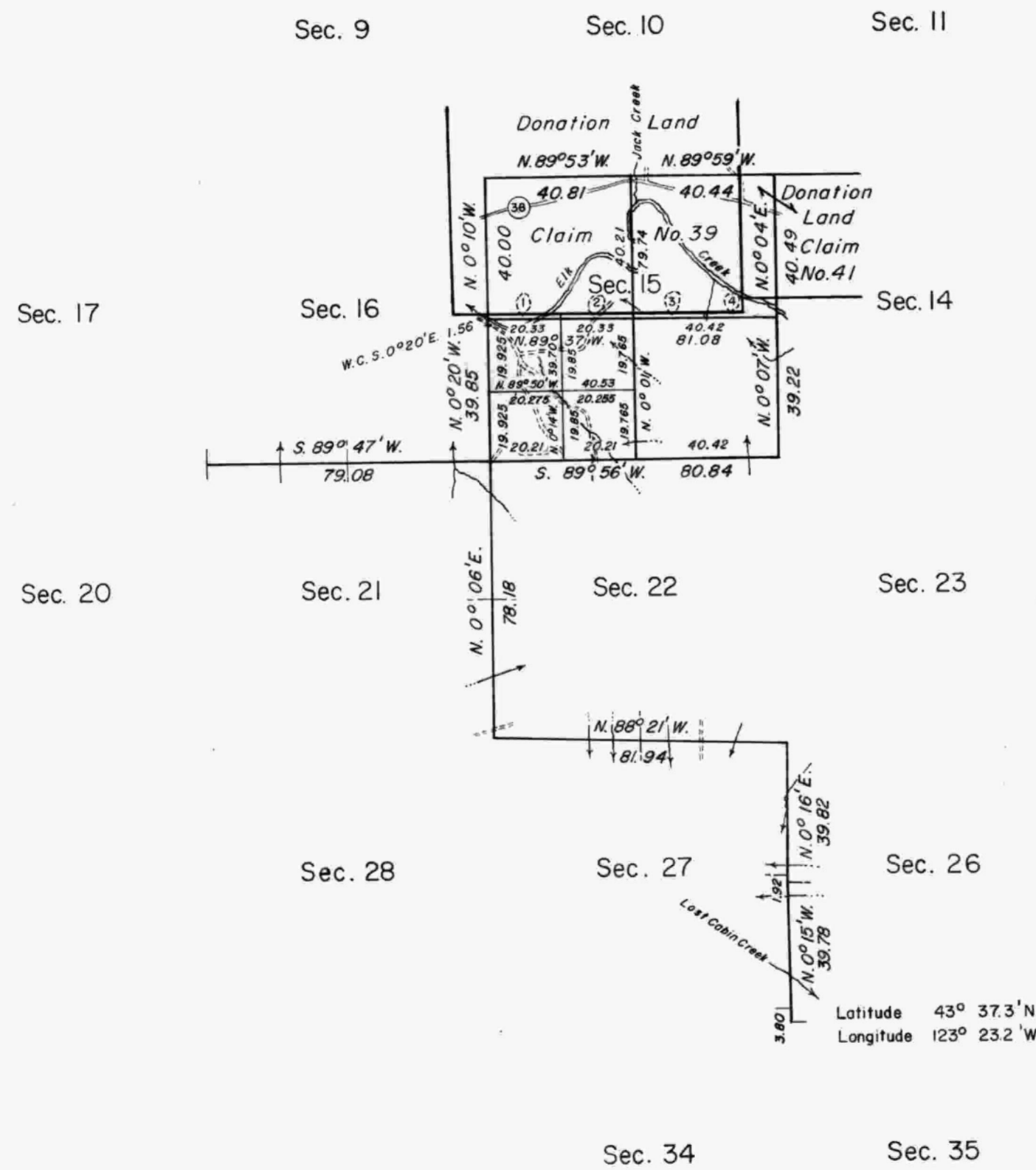
This plat represents a retracement and reestablishment of a portion of the subdivisional lines, T. 22 S., R. 6 W., Willamette Meridian, Oregon, designed to restore the corners in their true original locations according to the best available evidence. The lottings and areas are as shown on the plats approved February 20, 1856, and May 20, 1858.

A portion of the subdivisional lines were surveyed in 1856 by Harvey Gordon and Charles T. Gardner. In 1871, William H. Byars surveyed another portion of the subdivisional lines, and, in 1897, the remainder of the subdivisional lines were completed by Carl S. Nicklin.

Dependent resurvey of a portion of the subdivisional lines and subdivision of section 15, T. 22 S., R. 6 W., Willamette Meridian, Oregon, executed by Donald R. Beck, August 26 to September 30, 1963, under Special Instructions dated June 18, 1963, which provide for the surveys included under Group No. 517, Oregon.



Mean
Magnetic
Declination
20°36' East



Area resurveyed: 640 Acres

Timber in this area consists of Douglas fir, cedar, madrone, hemlock, maple, dogwood, chinquapin, alder, willow, oak, ash, and yew.

UNITED STATES DEPARTMENT OF THE INTERIOR
BUREAU OF LAND MANAGEMENT
Washington, D. C. April 16, 1965

This plat is strictly conformable to the approved field notes, and the survey, having been correctly executed in accordance with the requirements of law and the regulations of this Bureau, is hereby accepted.

For the Director

Clark J. Lumm

Acting Chief, Division of Engineering