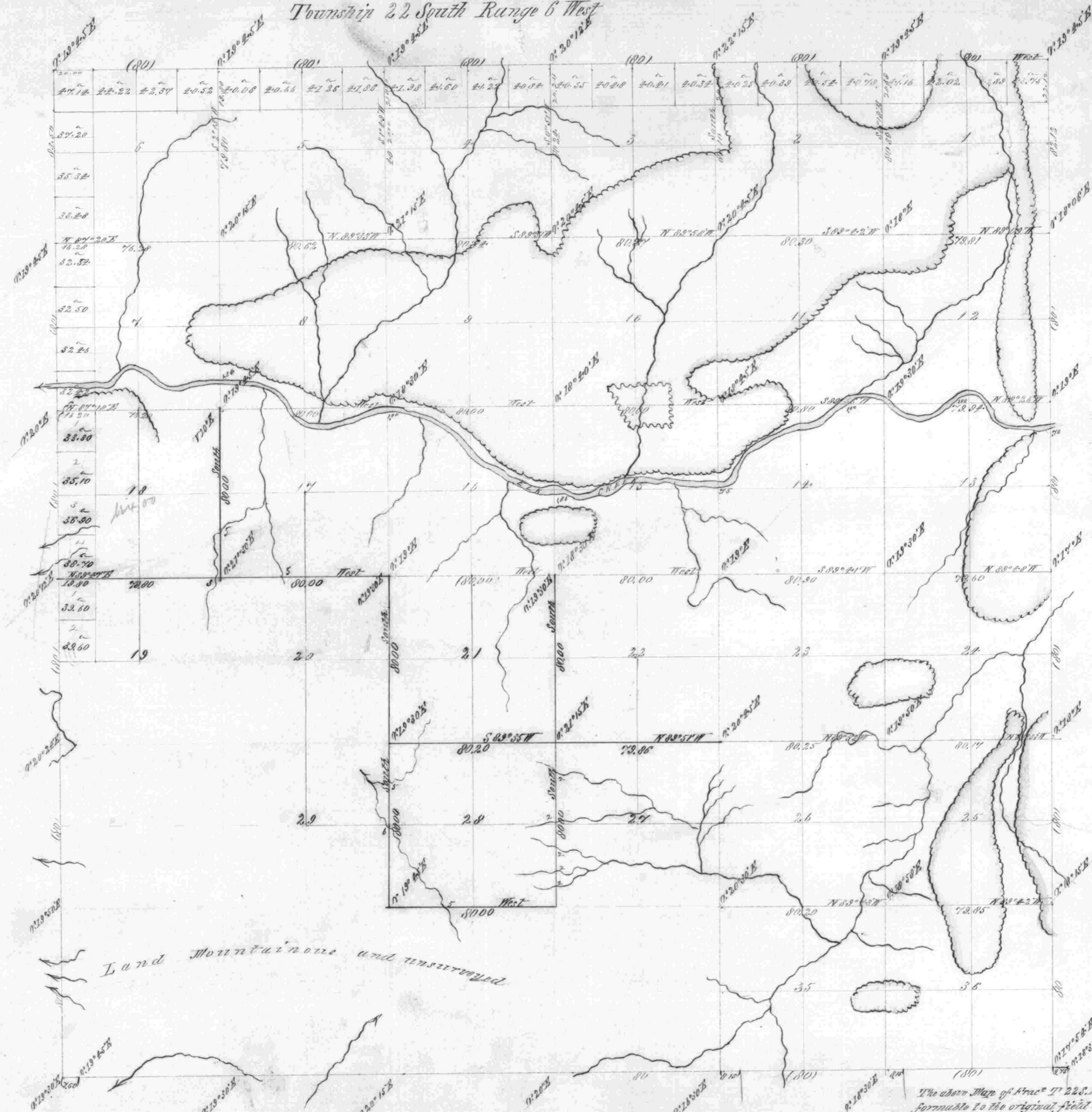


Township 22 South Range 6 West

Sections	Area Acres
18	528.00
19	159.20
20	320.00
21	620.00
22	200.00
23	200.00
24	200.00
25	150.00
26	200.00
27	200.00
Total	4008.20
Total U.S.	14393.23



General Description
 The best agricultural portion of this Township has been settled herebefore. The timber in the gulches and small creeks putting into the Valley is valuable and easy of access. Timber grows mostly Fir and Cedar.

Land Mountainous and unsurveyed

Scale 40 Chains to an inch

The above Map of Tract T²²S.R.6^W Willamette Oregon is strictly conformable to the original field notes of the survey thereof on file in this office which have been examined and approved.
 Surveyor General's Office
 Eugene City April 25th 1874
 W. H. Cole
 Secy Genl Oregon

Lines	Contractor	Contract		Progress Surveyed			Commenced	Completed
		No	Date	Miles	Chains	Links		
Subdivisions	William H. Byers	152	June 8 th 1871	2	79	84	Aug 22 1871	Aug 25 1871