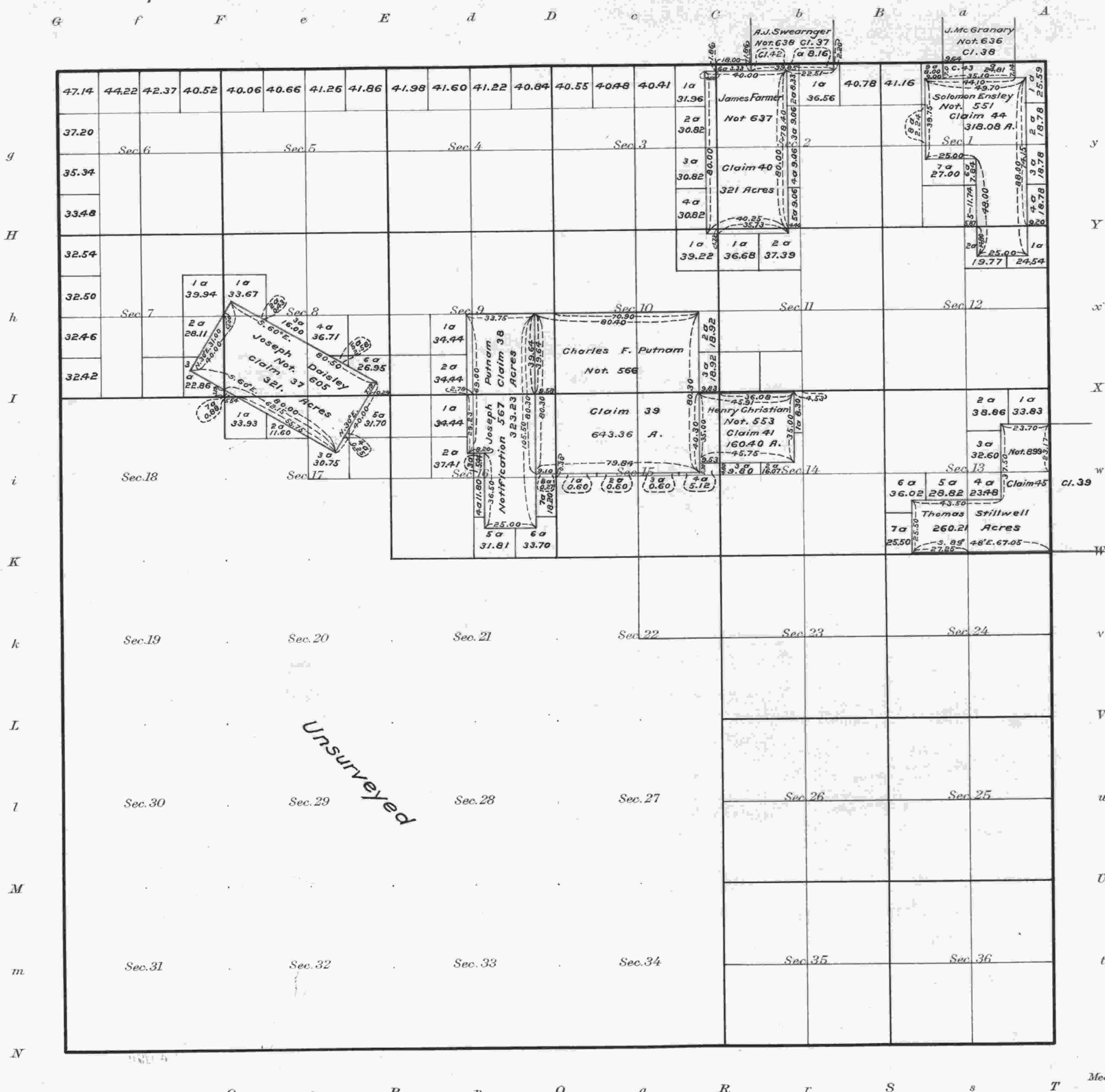


Township No. 22 South Range No. 6 West of the Willamette Meridian, Oregon



Aggregate Area of public lands	12095.57
Private Surveys	2380.25
Deduct error in computation	2.59
Total returns on Township plat	14393.23
Not returned on do.	80.00

Areas in Acres	
Public Land	
Indian Reservation	
Indian Allotments	
Mineral Claims	
Water Surface	
Total Area	

Scale 40 Chains to an inch
Mean Magnetic Declination

Surveys Designated	By Whom Surveyed	Contract		Amount of Surveys			When Surveyed	
		No.	Date	Mls.	chs.	lks.	Begun	Completed

The above Map of the survey of claims in Township No. 22 South Range No. 6 West of the Willamette Meridian Territory of Oregon is strictly conformable to the field notes of the surveys thereof on file in this Office, which have been examined and approved.
(Signed)
Surveyor General's Office
Salem May 20th 1858.

John S. Zieber
Sur. Gen. of Oregon

I certify the above to be a correct copy of the original plat on file in this office.
U.S. Surveyor General's Office
Portland, Oregon, Dec. 30, 1919
Surveyor General of Oregon.