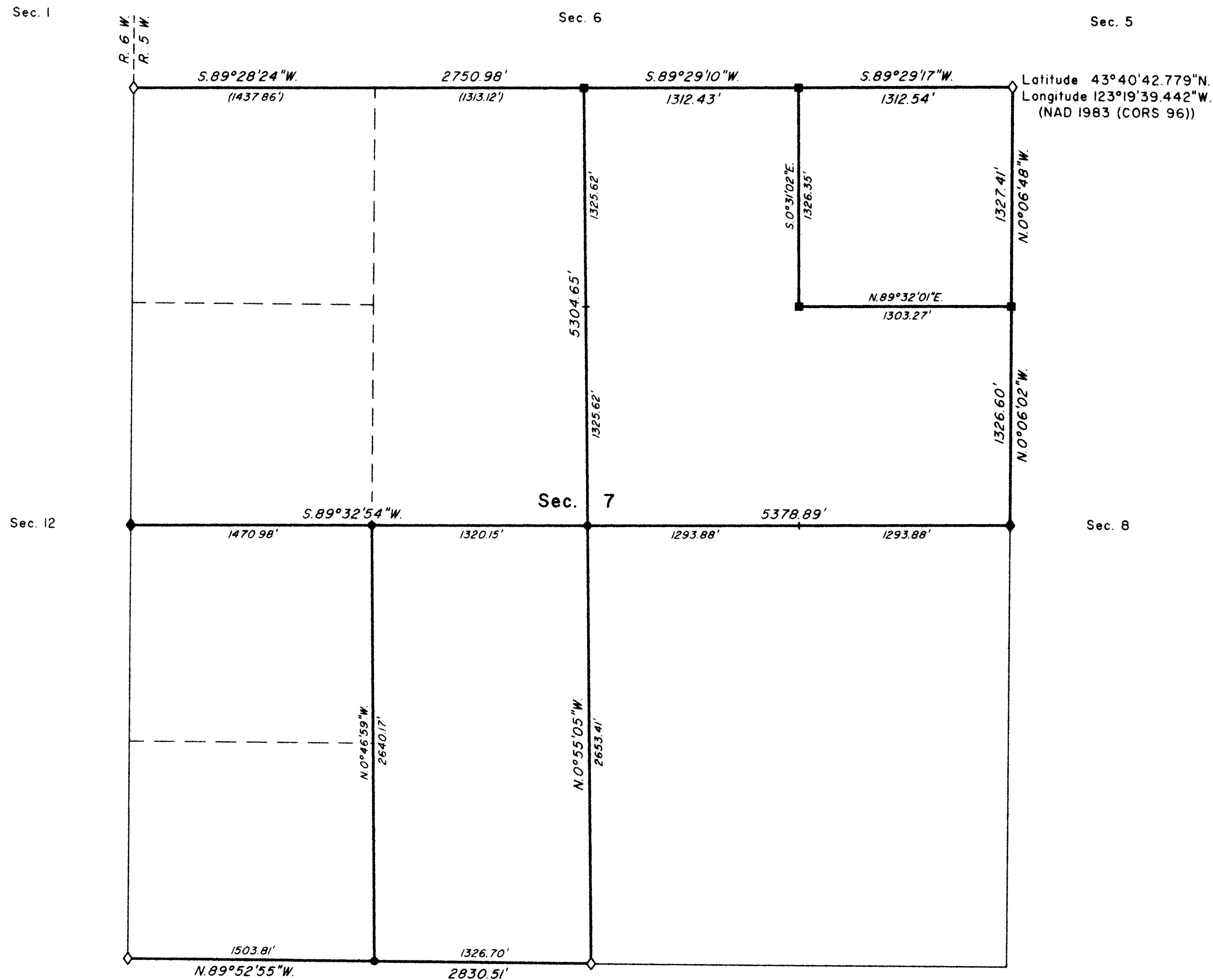


# TOWNSHIP 22 SOUTH, RANGE 5 WEST, OF THE WILLAMETTE MERIDIAN, OREGON

## DEPENDENT RESURVEY AND SUBDIVISION OF SECTION 7

FILED  
 Date: 4/30/2009 By: JC  
 This survey consists of:  
 Map: VOL. 55  
 Narrative: PAGES  
 Corner Rpt: 21707-20  
 DOUGLAS COUNTY  
 SURVEYOR



LEGAL SUBDIVISION	OFFICIAL ACRES
SECTION 7	
NW 1/4 NE 1/4	39.80
SW 1/4 NE 1/4	39.52
SE 1/4 NE 1/4	39.53

A history of surveys is contained in the field notes.

This plat represents a dependent resurvey of a portion of the subdivisional lines, T. 22 S., R. 5 W., Willamette Meridian, Oregon, designed to restore the corners in their true original locations according to the best available evidence, and the subdivision of section 7.

Measured distances and directions have been adjusted by computer software that incorporates a least squares adjustment routine. The adjusted bearings and distances are reported to the nearest second and 0.01 foot.

Actual quantity acreages have been returned for federal interest lands where indicated. New official acreages for previously designated aliquot parts and lots are listed in tabular form. The location of such shall continue to be ascertained in accordance with the Manual. Where not indicated, official lot designations and acreages are as shown on the plat approved February 20, 1856. Areas assigned a lot number may be further subdivided only by supplemental plat or another official survey.

The survey was executed by Timothy J. Moore, and A. Bert Skeesick, Cadastral Surveyors, and Robert H. Browning, Surveying Technician, beginning April 24, 2006, and completed May 15, 2006, pursuant to Special Instructions dated February 10, 2006, under Group Number 2133, Oregon.

### LEGEND

- ◇ Original corner previously remonumented
- ◆ Original corner remonumented this survey
- Corner previously established or reestablished; remonumented this survey
- Corner established this survey

UNITED STATES DEPARTMENT OF THE INTERIOR  
 BUREAU OF LAND MANAGEMENT

Portland, Oregon

This plat is strictly conformable to the approved field notes, and the survey, having been correctly executed in accordance with the requirements of law and the regulations of this Bureau, is hereby accepted.

For the Director

*John P. Farnsworth, Acting*

Chief Cadastral Surveyor of Oregon

April 9, 2009  
 Date

