

TOWNSHIP 22 SOUTH, RANGE 4 WEST, OF THE WILLAMETTE MERIDIAN, OREGON

DEPENDENT RESURVEY AND SUBDIVISION OF SECTION 1

FILED
 Date: 9/15/2011 By: JC
 This survey consists of:
 Map: NOT IN
 Narrative: DOUGLAS
 Corner Rpt: COUNTY
 DOUGLAS COUNTY
 SURVEYOR

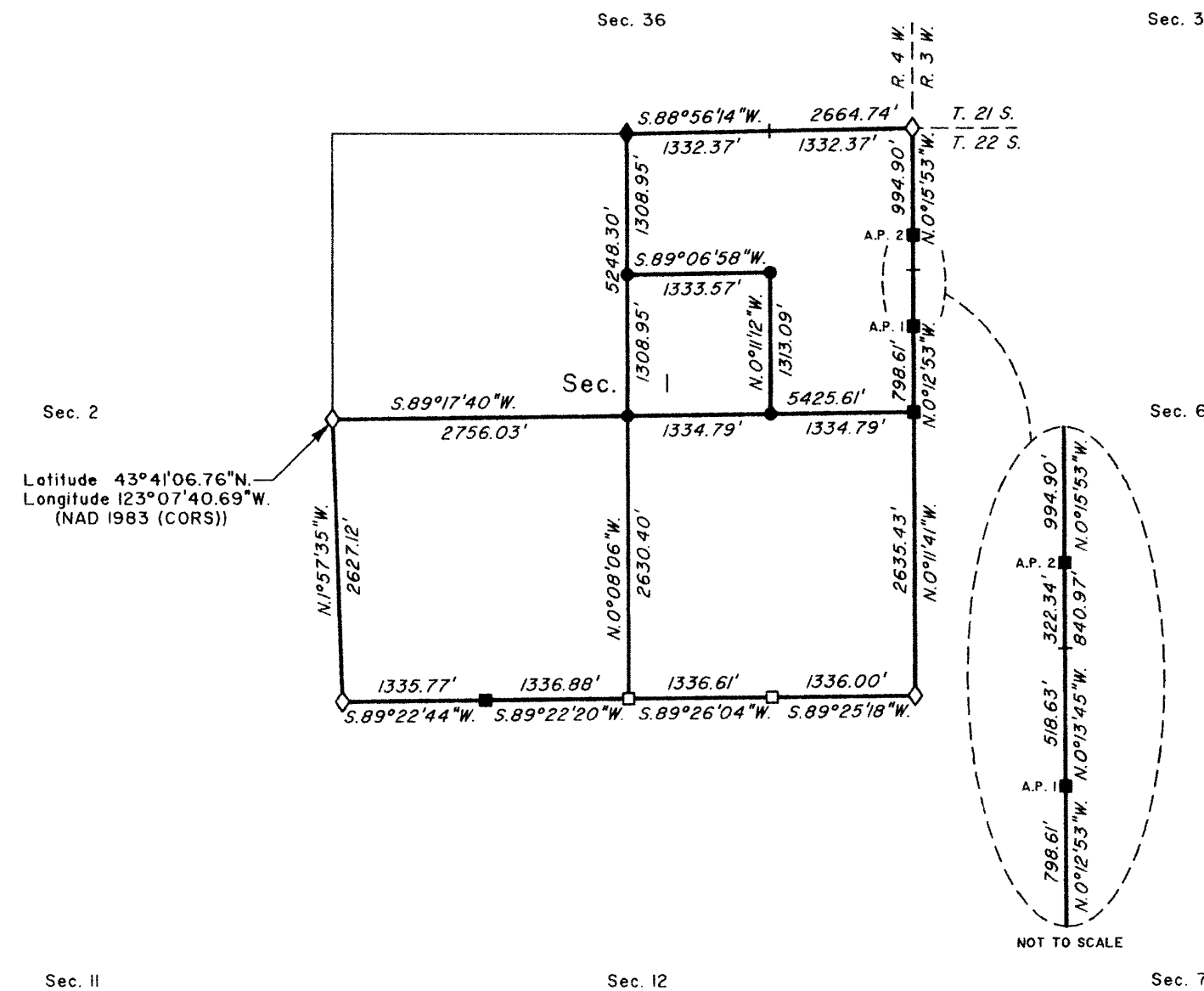
A history of surveys is contained in the field notes.

This plat represents a dependent resurvey of a portion of the east and north boundaries and subdivisional lines, T. 22 S., R. 4 W., Willamette Meridian, Oregon, designed to restore the corners in their true original locations according to the best available evidence, and the subdivision of section 1.

Actual quantity acreages have been returned for Federal interest lands where indicated. Changes in the official acreage of land described by aliquot part or lot number do not alter its description. Further subdivision of aliquot parts shall be in accordance with the Manual. Further subdivision of official lots may only be by supplemental plat or official survey. Official acreage and lot designations of Federal interest lands not affected by this survey are as shown on the plat approved February 28, 1856.

This survey was executed by Daniel N. Patterson, Cadastral Surveyor, beginning April 22, 2009 and completed July 20, 2009, pursuant to Special Instructions dated February 19, 2009 under Group Number 2255, Oregon.

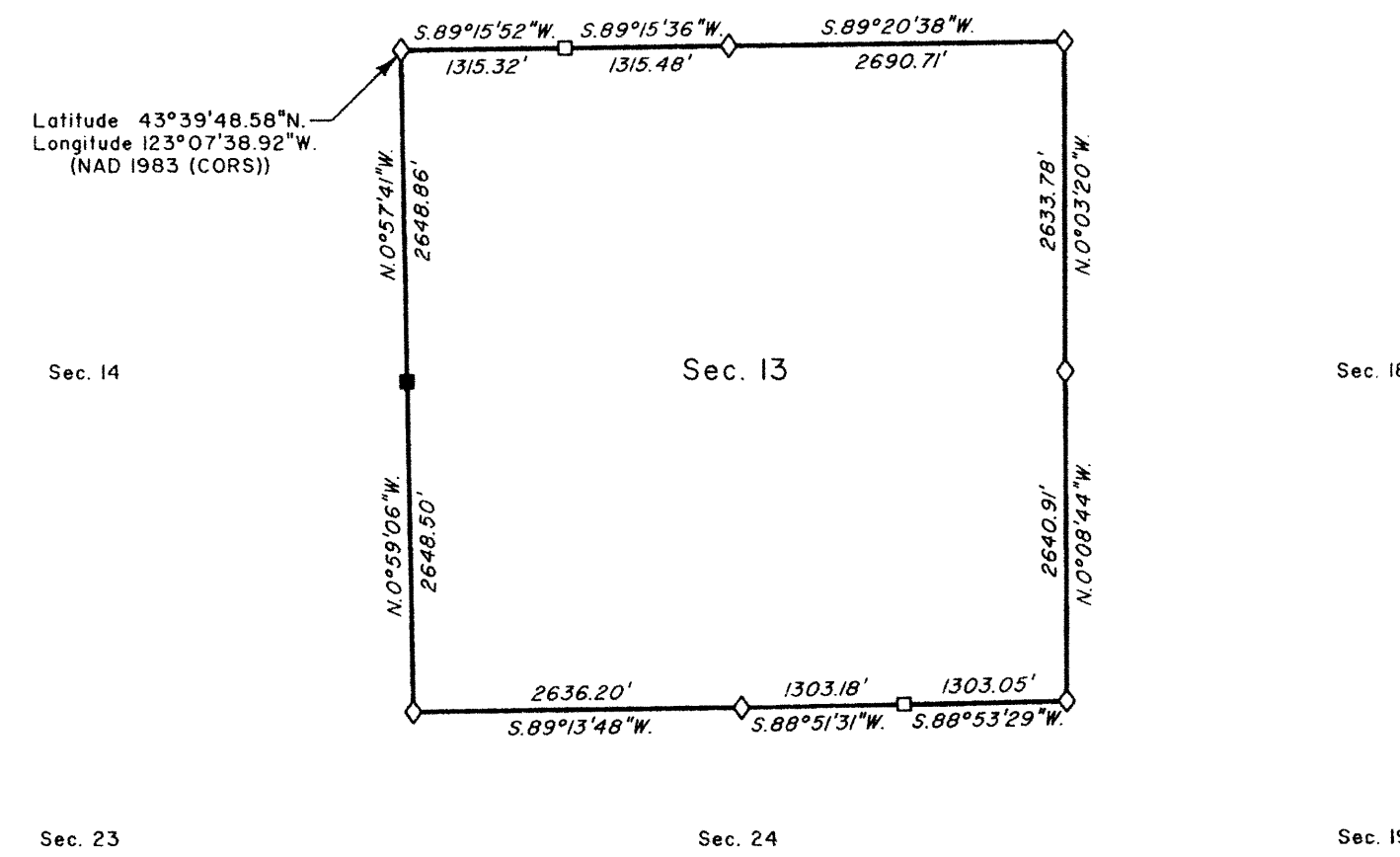
OFFICIALLY FILED: 8/26/11



Latitude 43°41'06.76"N
 Longitude 123°07'40.69"W
 (NAD 1983 (CORS))

Latitude 43°39'48.58"N
 Longitude 123°07'38.92"W
 (NAD 1983 (CORS))

LEGAL SUBDIVISION	OFFICIAL ACRES
SECTION 1	
SW 1/4 NE 1/4	40.15
NE 1/4 SW 1/4	41.28
NW 1/4 SW 1/4	41.24
SW 1/4 SW 1/4	40.60
SE 1/4 SW 1/4	40.66
NE 1/4 SE 1/4	40.37
NW 1/4 SE 1/4	40.33
SW 1/4 SE 1/4	40.35
SE 1/4 SE 1/4	40.38
SECTION 13	
NE 1/4 NE 1/4	40.54
NW 1/4 NE 1/4	40.61
SW 1/4 NE 1/4	40.28
SE 1/4 NE 1/4	40.20
NE 1/4 NW 1/4	39.94
NW 1/4 NW 1/4	39.98
SW 1/4 NW 1/4	40.01
SE 1/4 NW 1/4	39.97
NE 1/4 SW 1/4	40.09
NW 1/4 SW 1/4	40.06
SW 1/4 SW 1/4	40.08
SE 1/4 SW 1/4	40.11
NE 1/4 SE 1/4	40.00
NW 1/4 SE 1/4	40.09
SW 1/4 SE 1/4	39.79
SE 1/4 SE 1/4	39.70

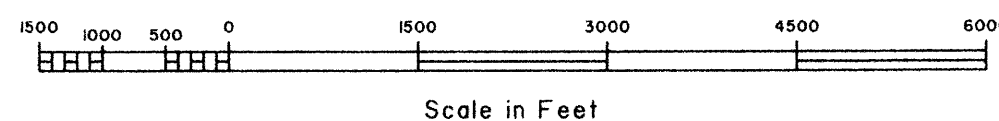


LEGEND	
◊	Original corner previously remonumented
◆	Original corner remonumented this survey
□	Corner previously established or reestablished
■	Corner previously established or reestablished; remonumented this survey
●	Corner established or reestablished this survey
+	Corner point calculated, no monument set

UNITED STATES DEPARTMENT OF THE INTERIOR
 BUREAU OF LAND MANAGEMENT
 Portland, Oregon

This plat is strictly conformable to the approved field notes, and the survey, having been correctly executed in accordance with the requirements of law and the regulations of this Bureau, is hereby accepted.

For the Director
John P. Kinnear, Acting
 Chief Cadastral Surveyor of Oregon



7-11-2011
 Date