

TOWNSHIP 22 SOUTH, RANGE 4 WEST, OF THE WILLAMETTE MERIDIAN, OREGON

DEPENDENT RESURVEY AND SUBDIVISION OF SECTION 9

FILED

Date: 8-23-2000 By: JC

This survey consists of:

Map _____

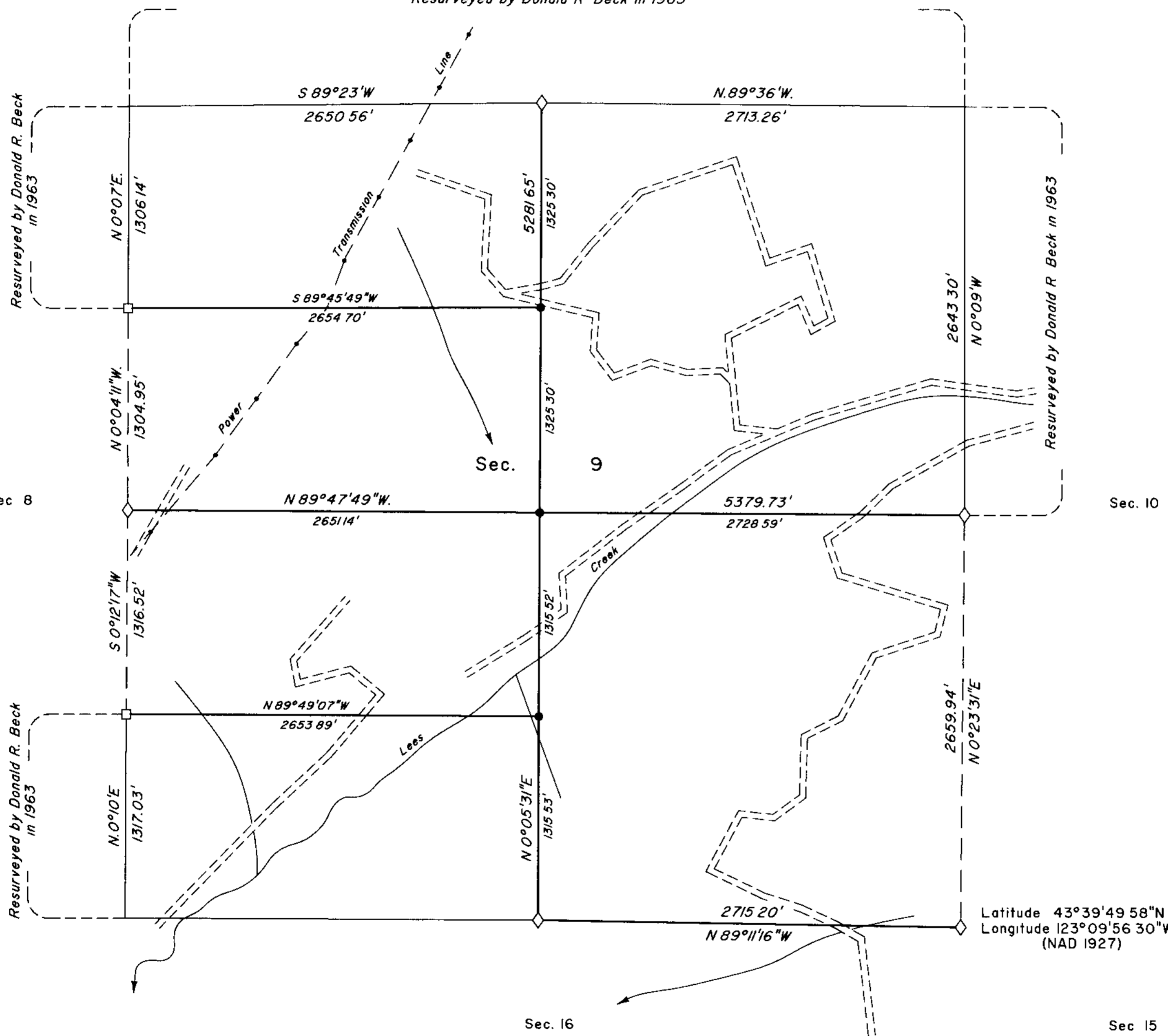
Narrative: Vol. 53

Corner Rpt. 99-20372-20383

DOUGLAS COUNTY
SURVEYOR

Sec 4

Resurveyed by Donald R. Beck in 1963



A history of surveys is contained in the field notes.

This plat represents a dependent resurvey of a portion of the subdivisional lines, T 22 S., R. 4 W., Willamette Meridian, Oregon, designed to restore the corners in their true original locations according to the best available evidence, and the subdivision of section 9

Measured distances and directions have been adjusted by Cadastral Measurement Management (CMM), computer software that incorporates a least squares adjustment routine. The adjusted bearings and distances are reported to the nearest second and 0.01 foot

The lottings and areas are as shown on the plat approved February 20, 1856

The survey was executed by A. Bert Skeesick, Cadastral Surveyor, and Robert H. Browning, Surveying Technician, beginning January 31, 2000, and completed February 24, 2000, pursuant to Special Instructions dated January 6, 2000, under Group Number 1935, Oregon.

Timber in this area consists of fir, cedar, hemlock, alder, maple, oak, chinquapin, pine, ash, yew, and madrone.

LEGEND

- ◊ Original corner previously remonumented
- Corner previously established or reestablished
- Corner established or reestablished this survey

UNITED STATES DEPARTMENT OF THE INTERIOR
BUREAU OF LAND MANAGEMENT

Portland, Oregon

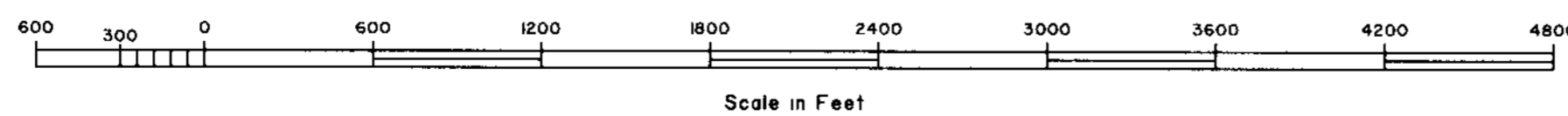
April 28, 2000

This plat is strictly conformable to the approved field notes, and the survey, having been correctly executed in accordance with the requirements of law and the regulations of this Bureau, is hereby accepted.

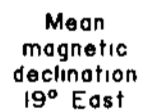
For the Director

John P. Farnsworth, Acting

Chief Cadastral Surveyor of Oregon



True Meridian



Mean magnetic declination 19° East