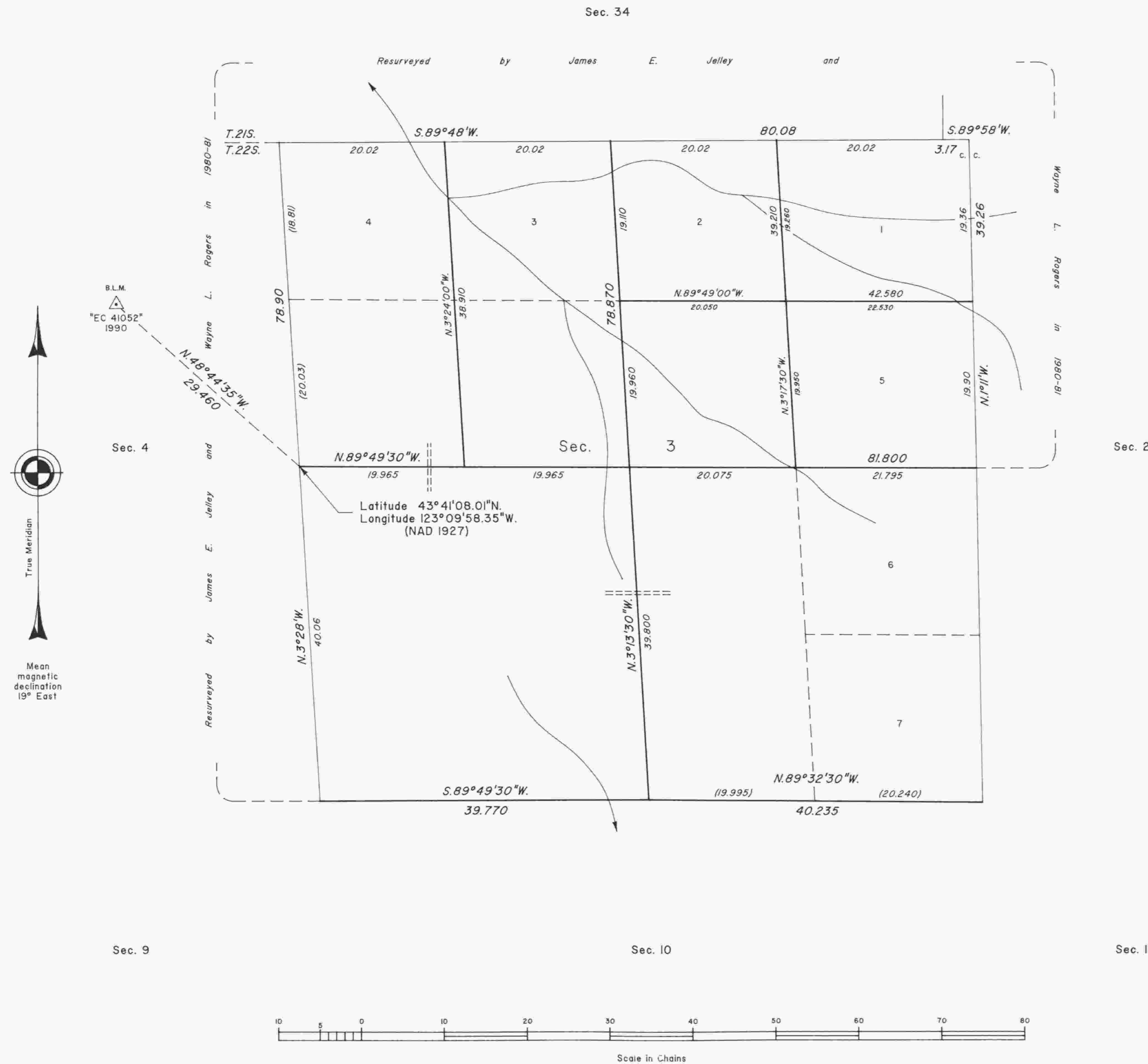


TOWNSHIP 22 SOUTH, RANGE 4 WEST, OF THE WILLAMETTE MERIDIAN, OREGON

DEPENDENT RESURVEY AND SUBDIVISION OF SECTION 3



A history of surveys is contained in the field notes.

This plat represents a dependent resurvey of a portion of the subdivisional lines, T. 22 S., R. 4 W., Willamette Meridian, Oregon, designed to restore the corners in their true original locations according to the best available evidence, and the subdivision of section 3.

The lottings and areas are as shown on the plats approved February 25, 1885, July 14, 1902, and May 20, 1903.

The survey was executed by Dale T. Bedell, Cadastral Surveyor, beginning August 25, 1993, and completed May 9, 1994, pursuant to Special Instructions dated July 21, 1993, under Group Number 1703, Oregon.

Timber in this area consists of fir, cedar, hemlock, pine, yew, alder, cherry, maple, oak, madrone, willow, ash and chinquapin.

The tie to the geodetic control station is reported as mean bearing and sea level distance.

UNITED STATES DEPARTMENT OF THE INTERIOR
BUREAU OF LAND MANAGEMENT

Portland, Oregon January 13, 1997

This plat is strictly conformable to the approved field notes, and the survey, having been correctly executed in accordance with the requirements of law and the regulations of this Bureau, is hereby accepted.

For the Director

Chief Cadastral Surveyor of Oregon