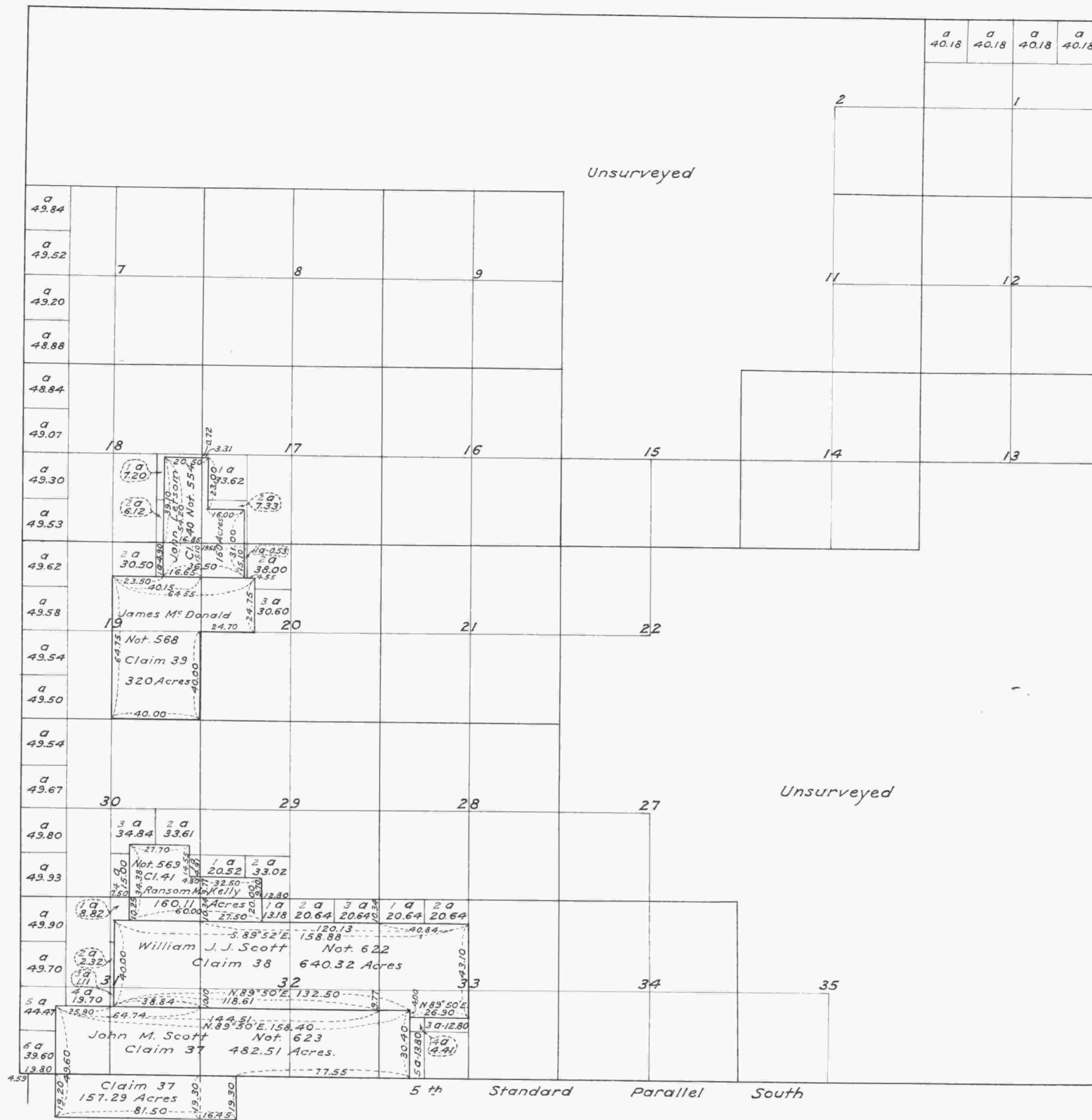


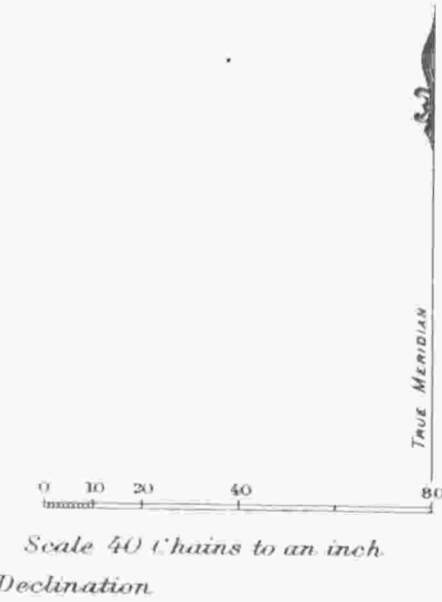
Township N<sup>o</sup> 22 South, Range N<sup>o</sup> 4 West of the Willamette Meridian, Oregon.



Aggregate Area of public lands 12195.15  
 Private Surveys 1762.94  
 Deduct error in computation 7.63  
 Total returns on Township plat 13950.46

I certify this to be a correct copy  
 of the original plat on file in this office.  
 U.S. Surveyor General's Office,  
 Portland Oregon, June 25, 1924.

*Wesley M. Cairness*  
 U.S. Surveyor General.



| Surveys Designated | By Whom Surveyed | Group |      | Amount of Surveys<br>Mls. chs. fcs. | When Surveyed |           |
|--------------------|------------------|-------|------|-------------------------------------|---------------|-----------|
|                    |                  | No.   | Date |                                     | Began         | Completed |
|                    |                  |       |      |                                     |               |           |
|                    |                  |       |      |                                     |               |           |
|                    |                  |       |      |                                     |               |           |
|                    |                  |       |      |                                     |               |           |
|                    |                  |       |      |                                     |               |           |
|                    |                  |       |      |                                     |               |           |
|                    |                  |       |      |                                     |               |           |
|                    |                  |       |      |                                     |               |           |
|                    |                  |       |      |                                     |               |           |
|                    |                  |       |      |                                     |               |           |

The survey of claims in  
 the above map of Township No. 22 South, Range No. 4 West of the Willamette  
 Meridian, Territory of Oregon is strictly conformable to the field notes of the surveys thereof on file  
 in this Office, which have been examined and approved.

U.S. Surveyor General's Office,  
 Salem October 19<sup>th</sup> 1859.

(signed) *W. W. Chapman.*  
 Surveyor General.