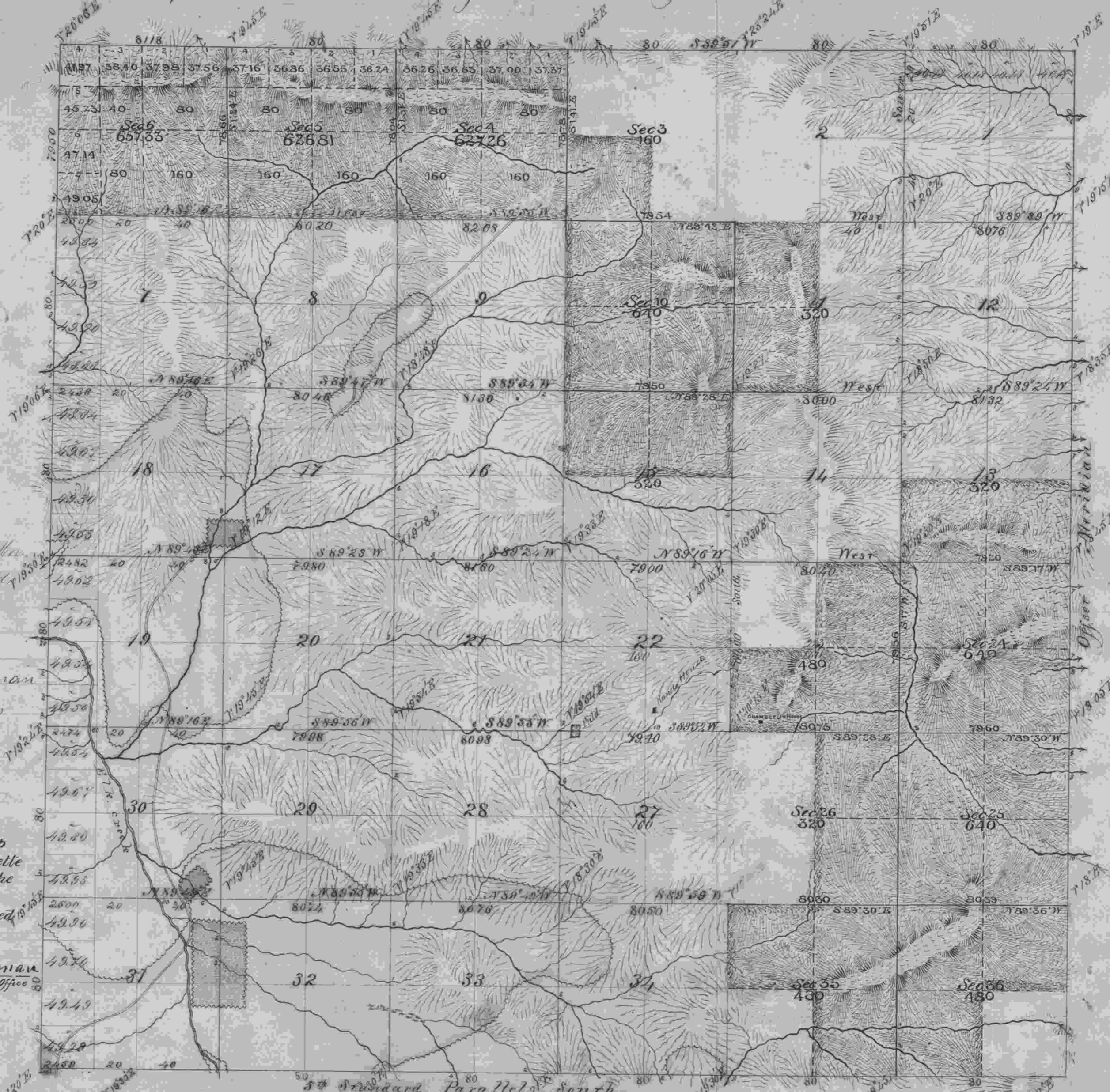


Township N^o 22 South Range N^o 4 West of the Willamette Meridian.

524



Deposited to Credit of 1st Auditor,
Bank Portland Oregon April 4
1879 by James S. Bond
For Field Work 20.00
Office 18.00
Total 38.00

A copy of sec 32, T22S, R4W, Mer.
is strictly conformable to the original plat
of the survey thereof on file in the Office
and has been examined and approved.
Sd. Surveyor General's Office
Portland Oregon
Feb 25th 1885

James C. Tolman
Surveyor General's Office

The above map of Fractional Township
No 22 South of Range No 4 West of the Willamette
Meridian, Oregon, is strictly conformable to the
Field Notes of the survey thereof on file in this
Office, which have been examined and approved.
U.S. Surveyor General's Office,
Portland, Oregon.

Feb 25, 1885 James C. Tolman
Surveyor General's Office

Area of Former Surveys 14,750.46 Acres — of New Survey 6,711.40 Acres Total number of Acres 21,461.86

Surveys designated	By whom surveyed	Contract		Amt. of surveys		When surveyed
		N ^o	Date	miles	chains	
Township Lines	Gordon and Gardner	52	July 1 st 1855	5	79 50	Sept 24 th 1855
Subdivision Lines	Gordon & Gardner	52	July 1 st 1855	41	73 80	Nov 20 th 1856
Total number of Acres						14,750.46
Subdivisions	William Thirt	531	April 11 1879	1	19 10	July 19 th 1878
Subdivisions	William P. Wright	514	August 27, 1881	13	74 32	Oct 16 to Oct 27 th 1884

The above Map of Fractional Township N^o 22
South of Range N^o 4 West of the Willamette Meridian Territory of
Oregon is strictly conformable to the field notes of the survey thereof
on file in the Office which have been examined and approved.

Surveyor General's Office
James C. Tolman
Feb 25, 1885

Map 514 ADAPTED BY THE HON. COMMISSIONER G. L. O. March 17, 1885

Total Hens A.S. 800.00