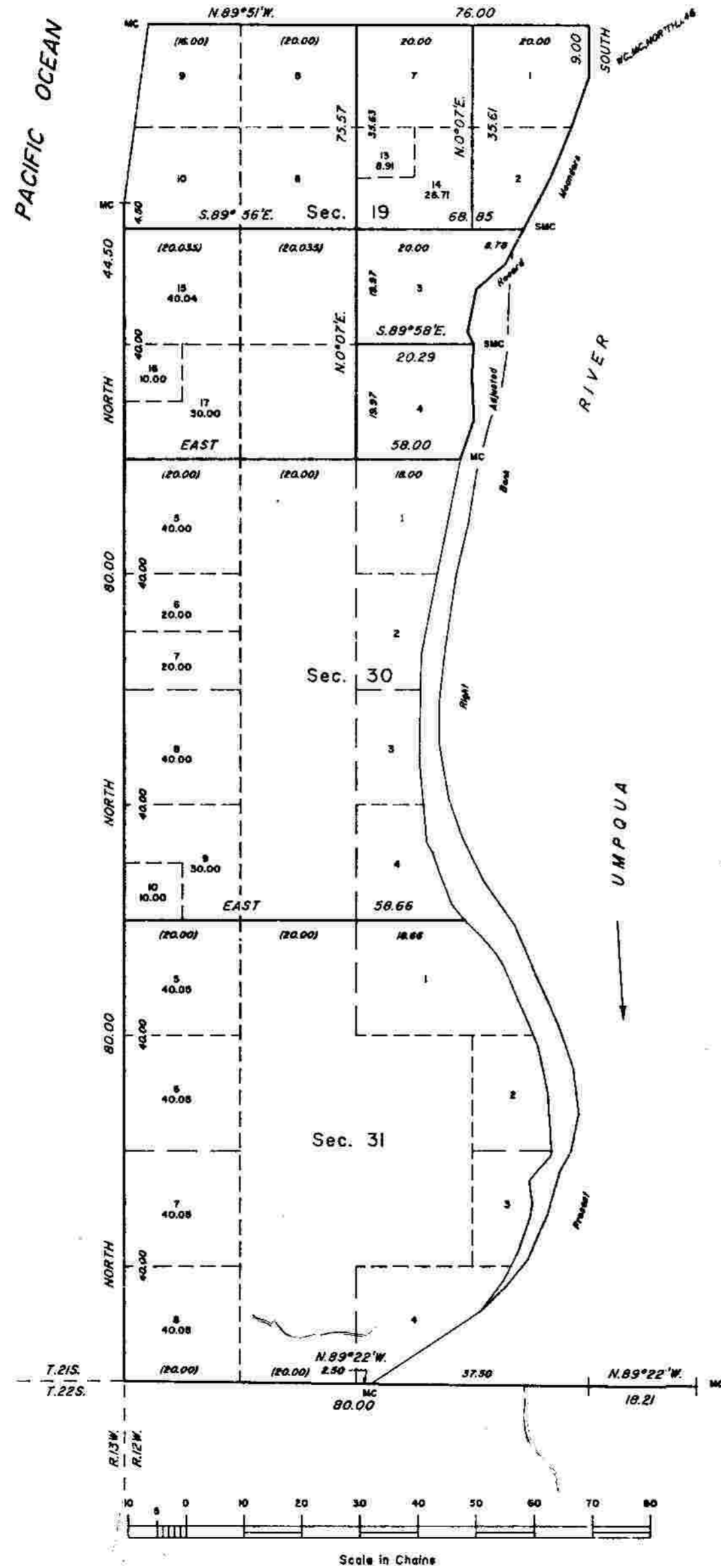


TOWNSHIP 21 SOUTH, RANGE 12 WEST, OF THE WILLAMETTE MERIDIAN, OREGON

SUPPLEMENTAL PLAT OF SECTIONS 19, 30 AND 31



This plat, showing amended lottings in sections 19, 30 and 31, T. 21 S., R. 12 W., Willamette Meridian, Oregon, is prepared to identify lands for a mineral patent and is based upon the plats approved September 6, 1858 and accepted August 26, 1933.

This map was prepared for patents only, there are no accompanying notes per Boyd Peterson Creeley B.L.M. 1-25-76

UNITED STATES DEPARTMENT OF THE INTERIOR
BUREAU OF LAND MANAGEMENT

Portland, Oregon June 16, 1989

This plat, showing amended lottings, is based upon the official records and, having been correctly prepared in accordance with the regulation of this Bureau, is hereby accepted.

For the Director

Wayne M. Gardner

Chief Cadastral Surveyor of Oregon