

TOWNSHIP 21 SOUTH, RANGE II WEST, OF THE WILLAMETTE MERIDIAN, OREGON
 DEPENDENT RESURVEY, SUBDIVISION OF SECTION 33 AND SURVEY

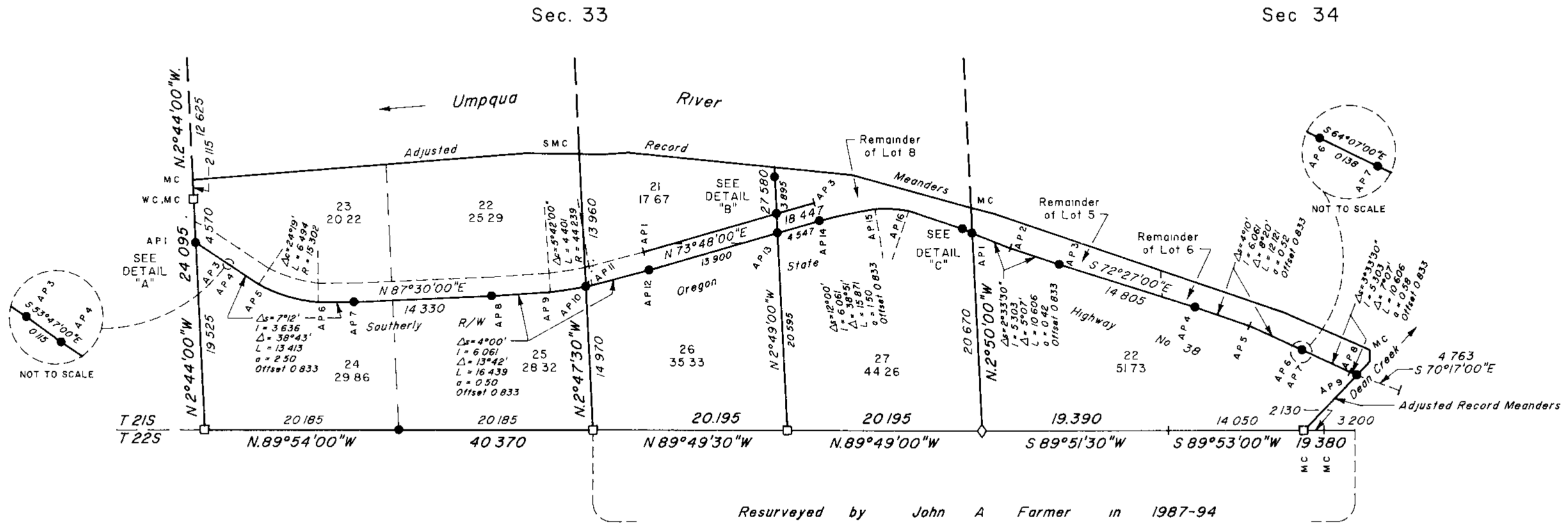
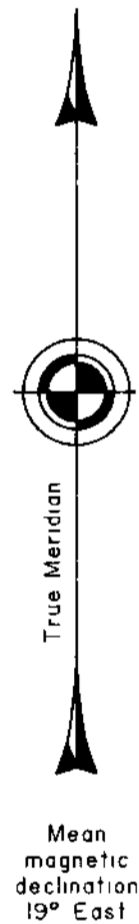
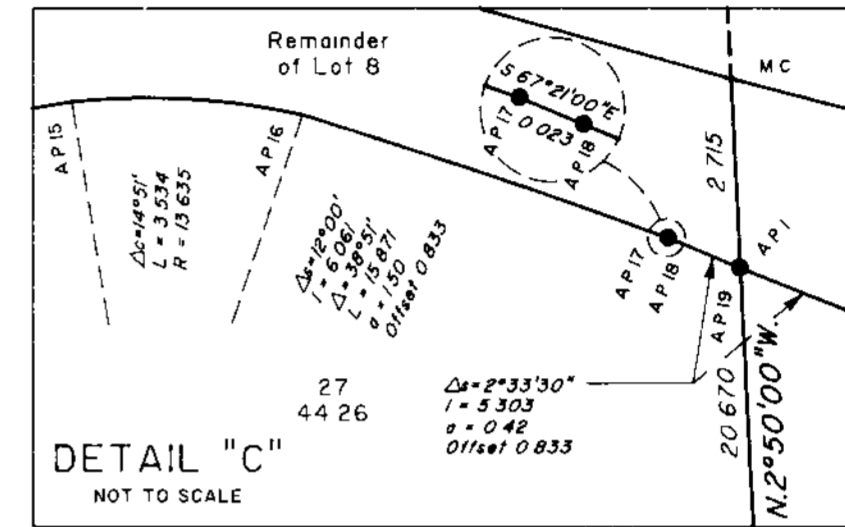
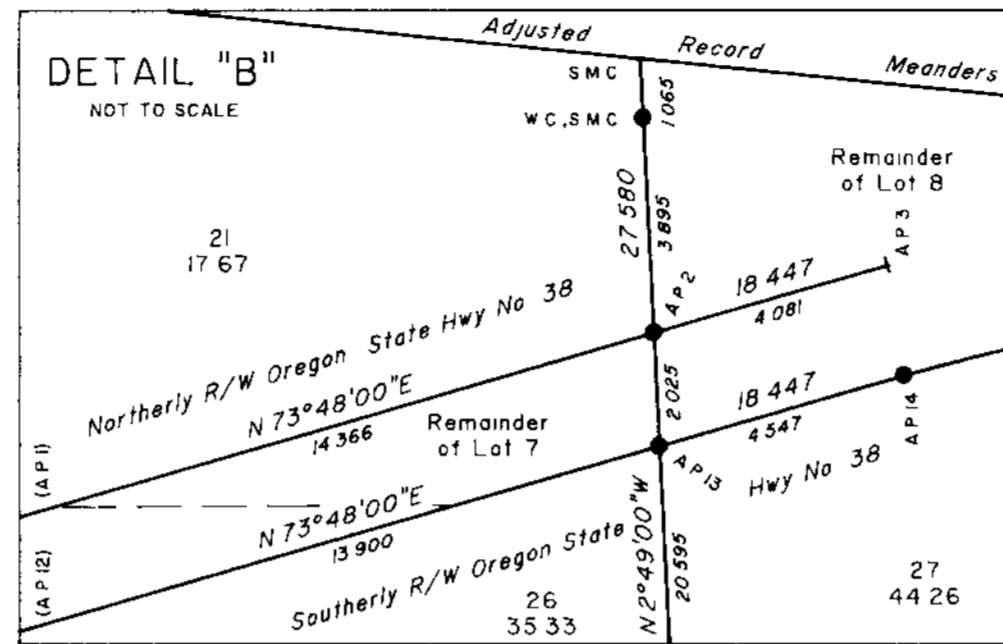
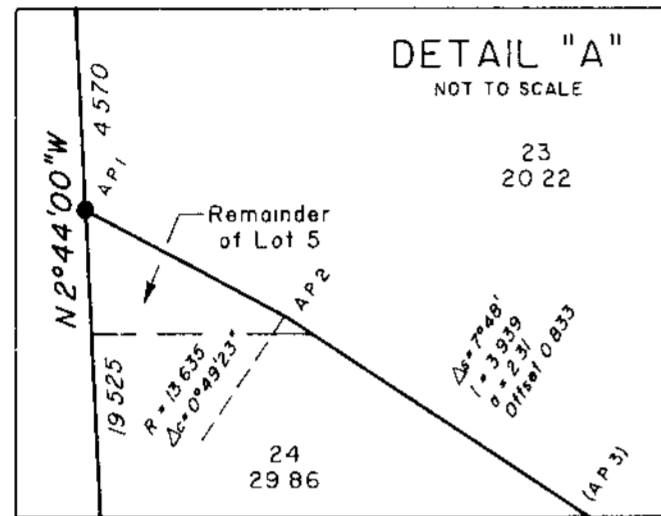
SHEET 2 OF 2

FILED

Date: 12-27-1999 By: JC
This survey consists of:

Map:
Narrative: Vol. 53
Com. for: Plat. 20185-20211

DO NOT SCALE



LEGEND

- ◊ Original corner previously remonumented
- ◻ Corner previously established or reestablished
- Corner established or reestablished this survey

UNITED STATES DEPARTMENT OF THE INTERIOR
BUREAU OF LAND MANAGEMENT

Portland, Oregon August 9, 1999

This plat is strictly conformable to the approved field notes, and the survey, having been correctly executed in accordance with the requirements of law and the regulations of this Bureau, is hereby accepted

For the Director

Wayne W. Gardner
Chief Cadastral Surveyor of Oregon