

TOWNSHIP 21 SOUTH, RANGE II WEST, OF THE WILLAMETTE MERIDIAN, OREGON
 DEPENDENT RESURVEY, SUBDIVISION OF SECTION 33 AND SURVEY

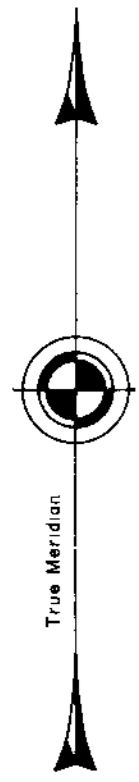
SHEET 1 OF 2

FILED

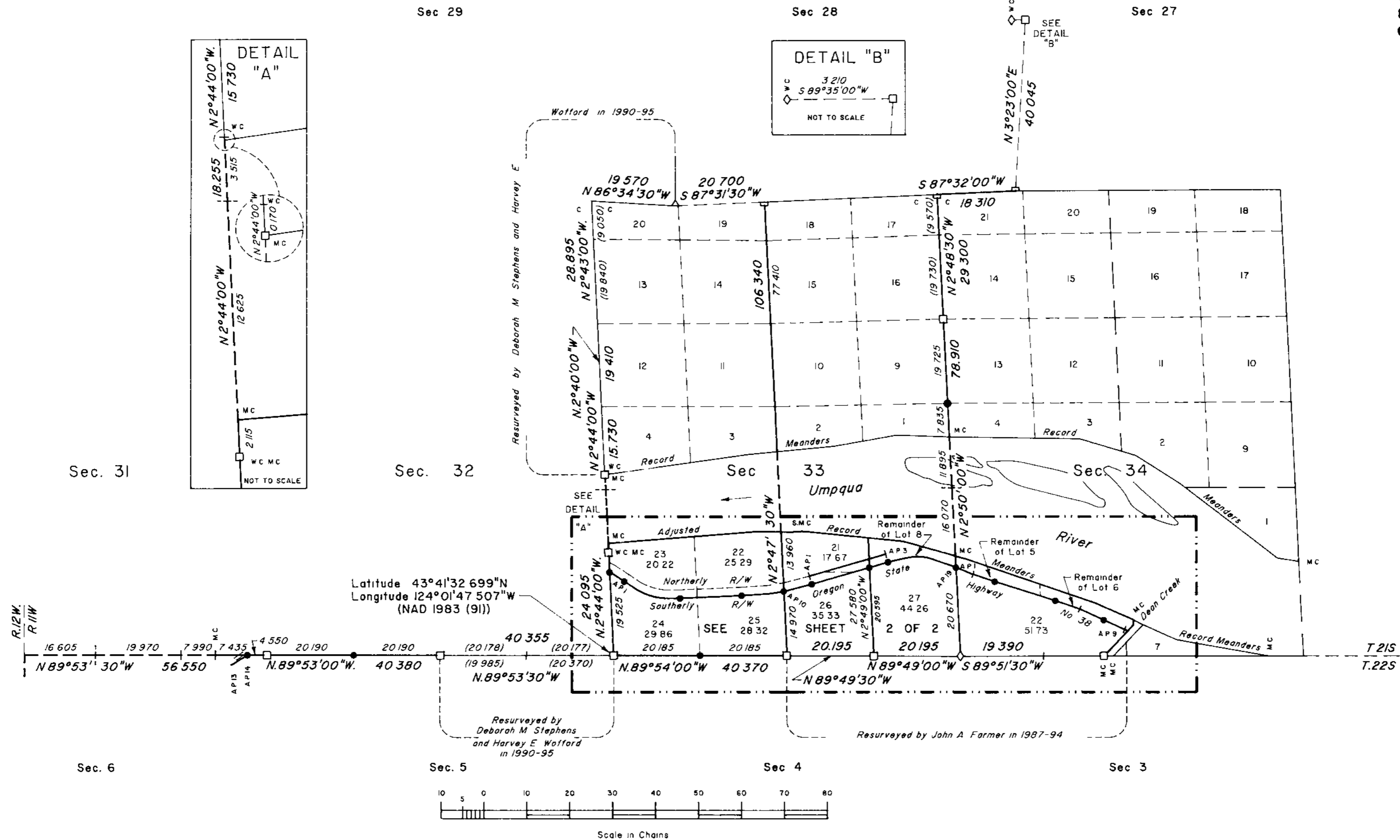
Date: 12-27-1999 By: J.C.
 This survey consists of:

Map: Vol 53
 Corner Rpt: P15 20185-

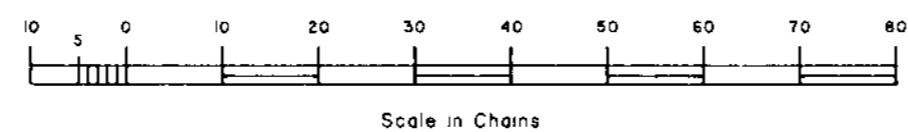
2021
 DOUGLAS COUNTY
 SURVEYOR



Mean magnetic declination
 19° East



Latitude 43°41'32.699"N
 Longitude 124°01'47.507"W
 (NAD 1983 (91))



UNITED STATES DEPARTMENT OF THE INTERIOR
 BUREAU OF LAND MANAGEMENT

Portland, Oregon August 9, 1999

A history of surveys is contained in the field notes

This plat represents a dependent resurvey of a portion of the south boundary and subdivisional lines, the adjusted record meanders of a portion of the left bank of the Umpqua River in sections 33 and 34, and the adjusted record meanders of the left bank of Dean Creek in section 34, T 21 S, R 11 W., Willamette Meridian, Oregon, designed to restore the corners in their true original locations according to the best available evidence, the subdivision of section 33, and the metes-and-bounds surveys in sections 33 and 34

Except as shown hereon, the lottings and areas are as shown on the plats approved August 2, 1875 and May 6, 1893

The survey was executed by Boyd W Peterson, Cadastral Surveyor, and Richard L Sanford, Surveying Technician, beginning April 24, 1992, and completed May 1, 1996, pursuant to Special Instructions dated April 16, 1992, and Supplemental Special Instructions dated January 18, 1996, under Group Number 1664, Oregon

Timber in this area consists of fir, hemlock, cedar, maple, alder, madrone, myrtle, and chittum

LEGEND

- ◊ Original corner previously remonumented
- ◻ Corner previously established or reestablished
- Corner established or reestablished this survey

This plat is strictly conformable to the approved field notes, and the survey, having been correctly executed in accordance with the requirements of law and the regulations of this Bureau, is hereby accepted

For the Director

Wayne D. Gardner
 Chief Cadastral Surveyor of Oregon