

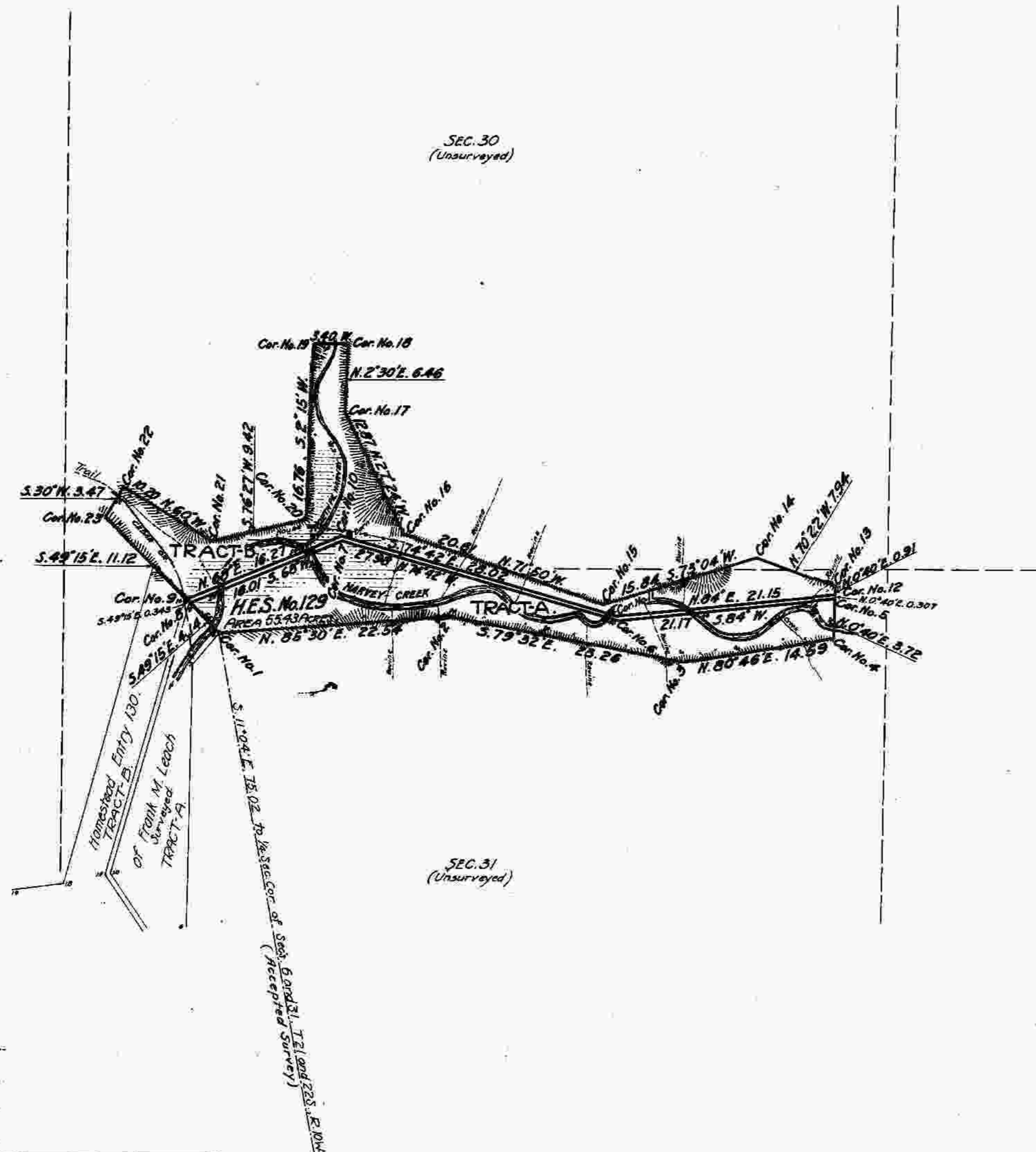
Plat of
**HOMESTEAD
 ENTRY SURVEY**
 No. 129
 in the
SIUSLAW NATIONAL FOREST
 in
 Section 30 unsurveyed, T.21S., R.10W.
 Section 31 unsurveyed, T.21S., R.10W.
 of the
 Willamette Meridian, Oregon

This plat of Homestead Entry Survey
 No. 129 State of Oregon is strictly
 conformable to the field notes thereof
 on file in this office, which have been
 examined and approved.

U.S. Surveyor General's Office
 Portland Oregon
 February 16, 1916

Edward Worth
 U.S. Surveyor General

ACCEPTED BY THE HON. COMMISSIONER G. L. C. June 1, 1916



Patent issued _____
 Patent No. _____
 Serial H. E. No. _____
 Land Office _____

SCALE 10 chains to 1 inch

Survey Designated	By whom Surveyed	Inst. Cont. Group		When Surveyed		Date of Approval
		No.	Date	Begun	Completed	
H.E. Survey No. 129	Frank D. Maxwell, Surveyor Forest Service	129	March 12, 1914	July 30, 1914	August 4, 1914	Feb. 16, 1916

Areas in Acres	
H.E. Survey No. 129	Conflicts
In Section Tract A	27.59
In Section Tract B	27.84
In Section	
In Section	
Total	55.43

Act of June 11, 1906 Act of June 30, 1911
 List No. 6-683 Dated January 24, 1912
 Latitude 43° 41' N
 Longitude 123° 56' W
 Mean Mag. Incl. 21° 24' E.
 At Corner No. 1