

Date: 4/2/2015 By: JC
This survey consists of:
Map: T21-9W 2015-1
Narrative: VOL. 58 PAGES
Corner Rpt: 23160-23173

TOWNSHIP 21 SOUTH, RANGE 9 WEST, OF THE WILLAMETTE MERIDIAN, OREGON

DEPENDENT RESURVEY

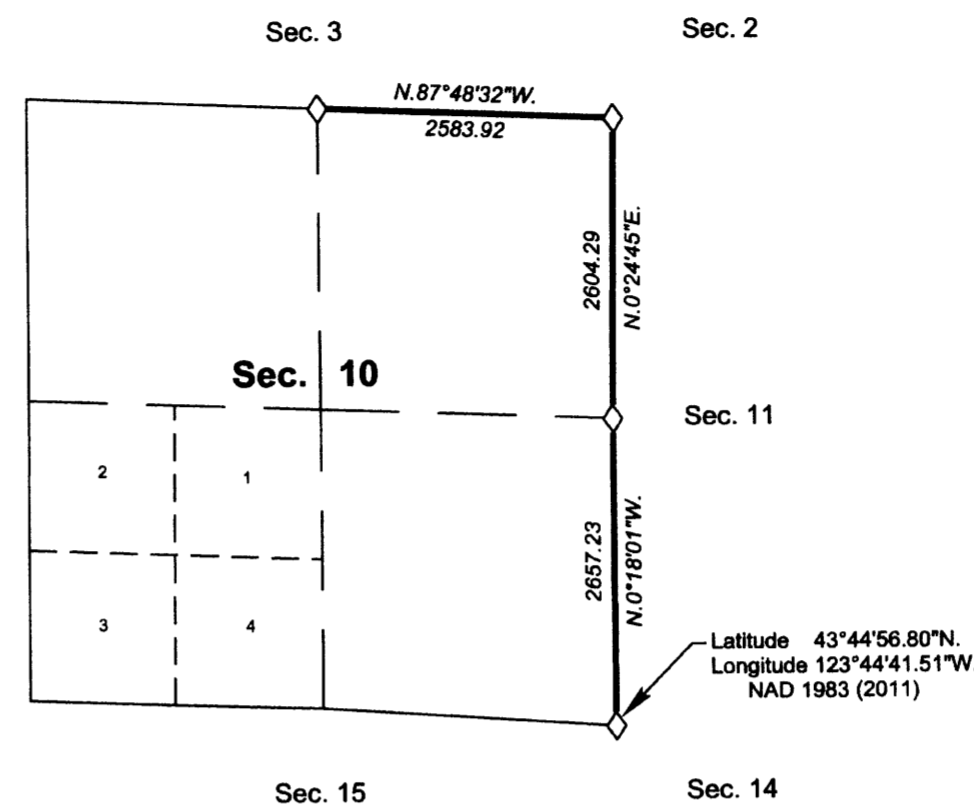
DOUGLAS COUNTY
SURVEYOR

A history of surveys, corner descriptions, and other relevant information are contained in the field notes.

This plat represents the dependent resurvey of a portion of the subdivisional lines, designed to restore the corners in their true original locations according to the best available evidence, Township 21 South, Range 9 West, Willamette Meridian, Oregon.

The lottings and areas are as shown on the plat approved September 21, 1895, and plat accepted February 20, 1970.

Survey executed by Joseph M. Mannix, Cadastral Surveyor, beginning June 3, 2013, and completed August 5, 2013, pursuant to special instructions approved May 21, 2013, for Group No. 2721, Oregon.

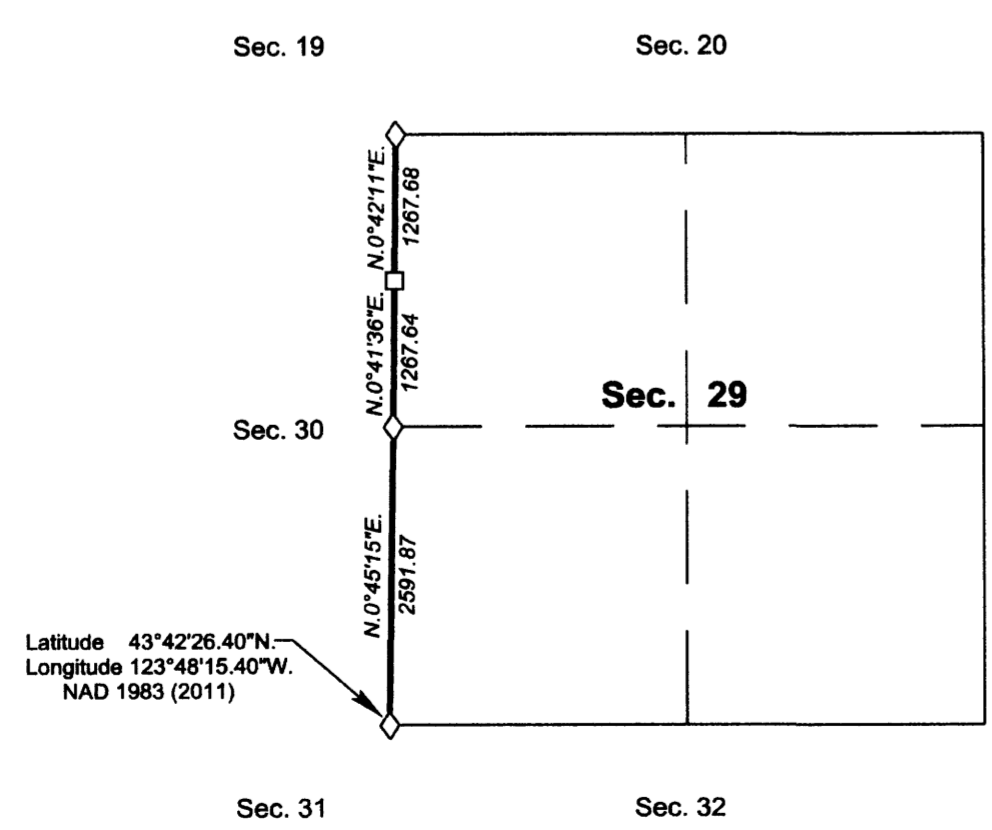


Latitude 43°44'56.80\"N.
Longitude 123°44'41.51\"W.
NAD 1983 (2011)

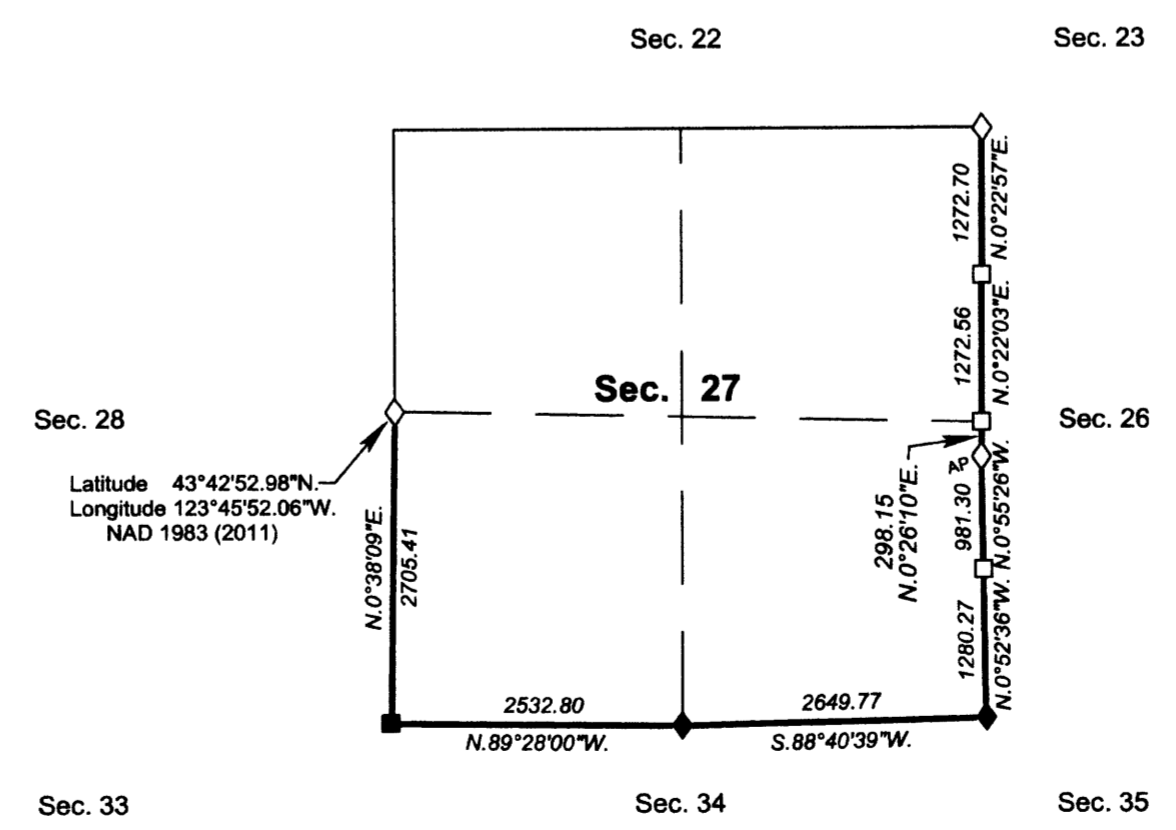


LEGEND

- ◊ Original corner previously remonumented
- ◆ Original corner remonumented this survey
- Corner previously established or reestablished
- Corner previously reestablished; remonumented this survey



Latitude 43°42'26.40\"N.
Longitude 123°48'15.40\"W.
NAD 1983 (2011)



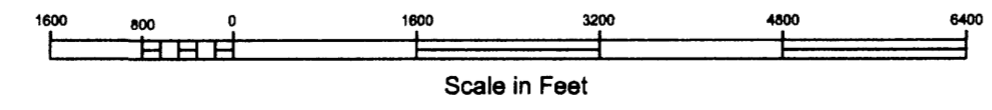
Latitude 43°42'52.98\"N.
Longitude 123°45'52.06\"W.
NAD 1983 (2011)

UNITED STATES DEPARTMENT OF THE INTERIOR
BUREAU OF LAND MANAGEMENT
Portland, Oregon

This plat is strictly conformable to the approved field notes, and the survey, having been correctly executed in accordance with the requirements of law and the regulations of this Bureau, is hereby accepted.

For the Director
Mary J. M. Hartzel
Chief Cadastral Surveyor of Oregon

February 5, 2015
Date



OFFICIALLY FILED: 3/30/2015