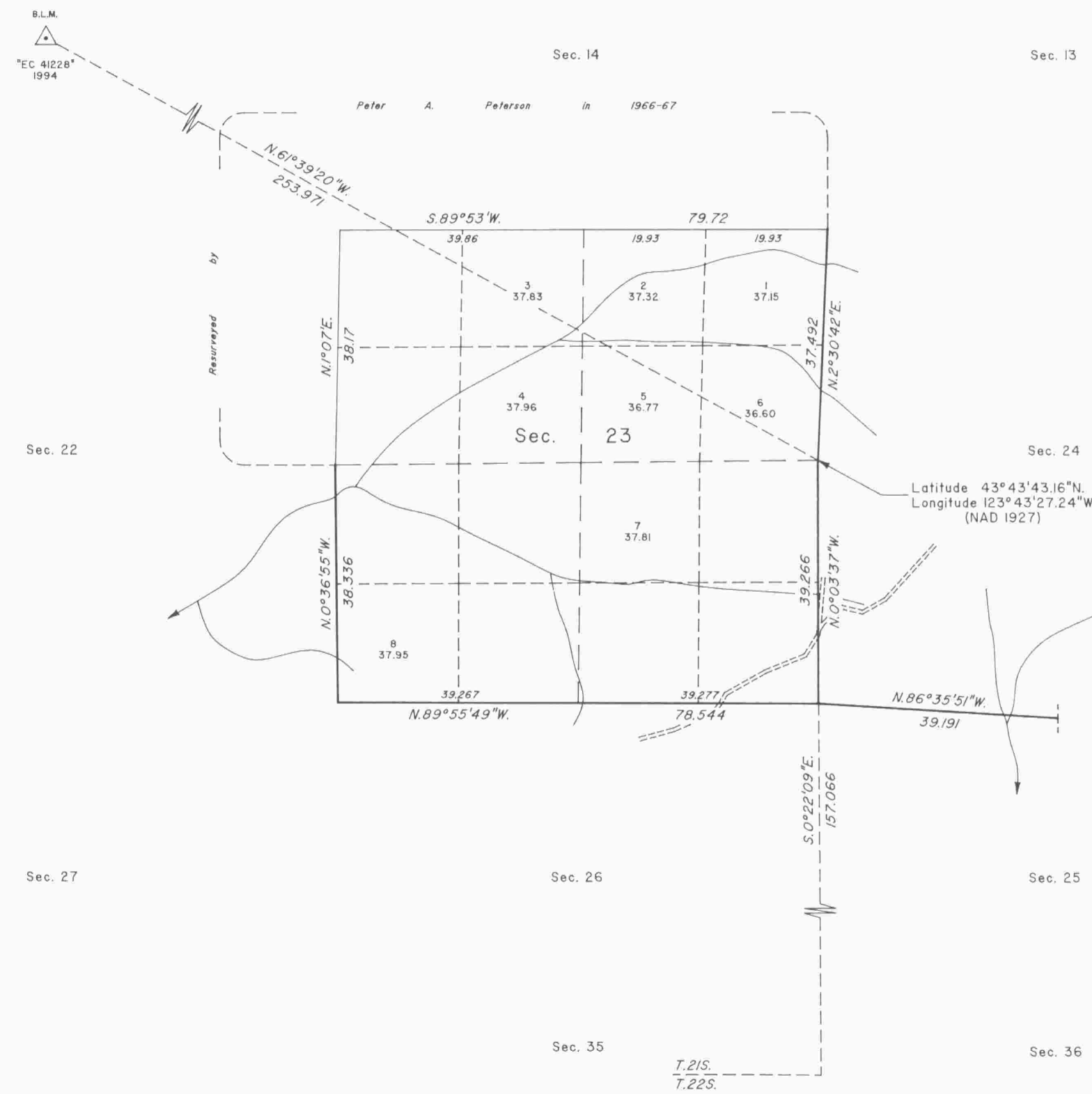


TOWNSHIP 21 SOUTH, RANGE 9 WEST, OF THE WILLAMETTE MERIDIAN, OREGON

DEPENDENT RESURVEY



A history of surveys is contained in the field notes.

This plat represents a dependent resurvey of a portion of the subdivisional lines, T. 21 S., R. 9 W., Willamette Meridian, Oregon, designed to restore the corners in their true original locations according to the best available evidence.

Measured distances and directions have been adjusted by Cadastral Measurement Management (CMM), a computer software that incorporates a least squares adjustment routine. The adjusted bearings and distances are reported to the nearest second and 0.001 chain.

Except as shown hereon, the lottings and areas are as shown on the plat approved September 21, 1895.

The survey was executed by Boyd W. Peterson, Cadastral Surveyor, beginning June 1, 1994, and completed March 1, 1995, pursuant to Special Instructions dated May 19, 1994, under Group Number 1735, Oregon.

Timber in this area consists of fir, hemlock, cedar, alder, maple, myrtle, and madrone.

The tie to the geodetic control station is reported as mean bearing and sea level distance.

UNITED STATES DEPARTMENT OF THE INTERIOR
BUREAU OF LAND MANAGEMENT

Portland, Oregon January 24, 1997

This plat is strictly conformable to the approved field notes, and the survey, having been correctly executed in accordance with the requirements of law and the regulations of this Bureau, is hereby accepted.

For the Director

Wayne M. Gardner
Chief Cadastral Surveyor of Oregon