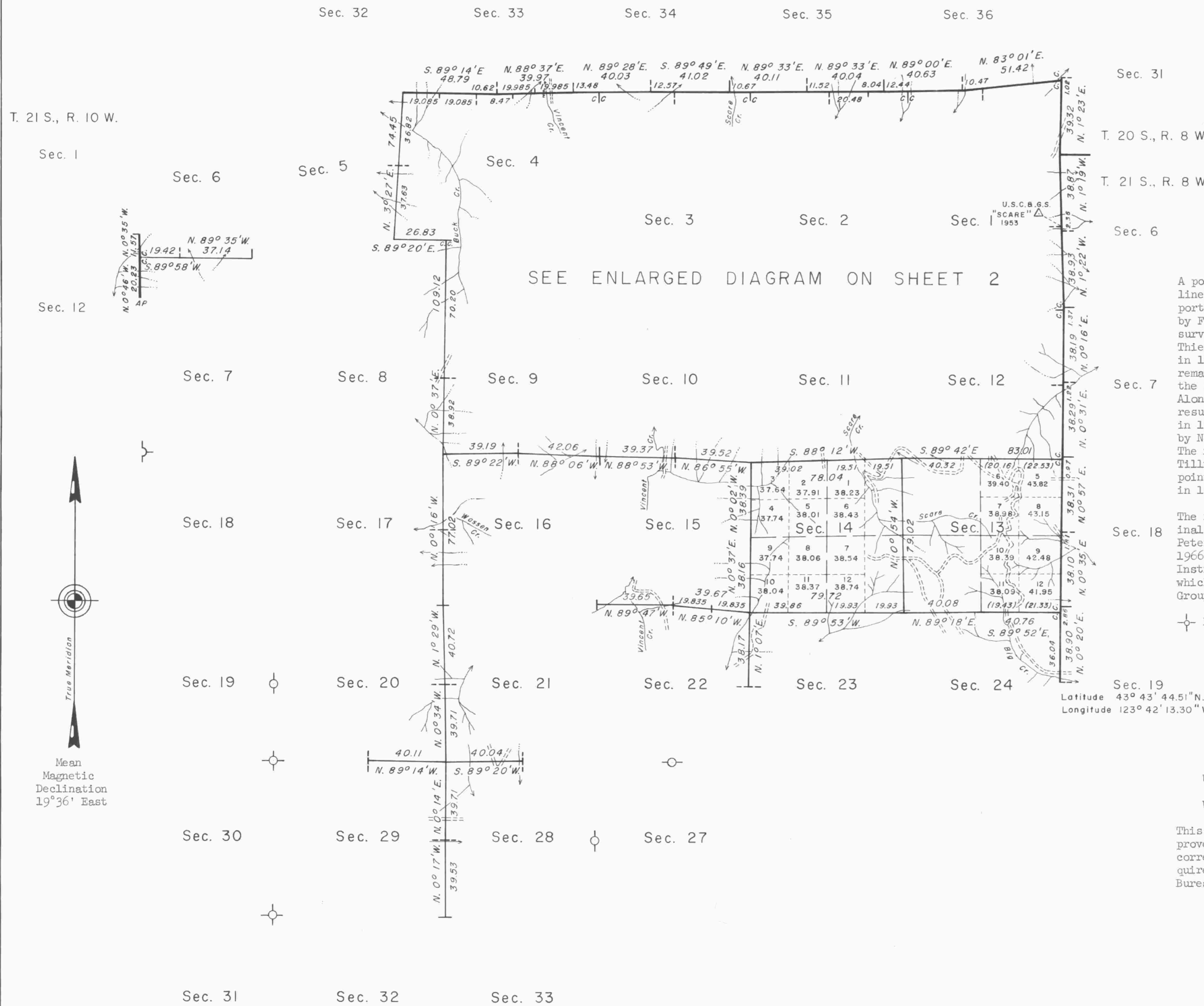


TOWNSHIP 21 SOUTH, RANGE 9 WEST, OF THE WILLAMETTE MERIDIAN, OREGON.

DEPENDENT RESURVEY AND REMONUMENTATION



Sec. 31
 T. 20 S., R. 8 W.
 T. 21 S., R. 8 W.

This plat, in two sheets, represents a retracement and reestablishment of a portion of the north, east, and west boundaries, and subdivisional lines, and remonumentation of certain original corner points, T. 21 S., R. 9 W., Willamette Meridian, Oregon, designed to restore the corners in their true original locations according to the best available evidence.

Sec. 6

The lottings and areas are as shown on the plats approved July 3, 1878, March 27, 1879, and September 21, 1895, except as new or modified hereon.

Sec. 7

A portion of the north boundary and subdivisional lines were surveyed by William Thiel in 1877. A portion of the subdivisional lines were surveyed by F. M. Johnson in 1879. The east boundary was surveyed by William P. Wright in 1883. William Thiel completed the survey of the north boundary in 1891. The south and west boundaries and the remaining subdivisional lines were surveyed, and the north and east boundaries were retraced by Alonzo Gesner in 1894. The west boundary was resurveyed by Charles M. Collier and Fred Rodolf in 1918-1919. The east boundary was resurveyed by Norman D. Price and George F. Rigby in 1945. The north boundary was resurveyed by Thomas A. Tillman in 1953-1954. Certain original corner points were remonumented by Norman J. McDonald in 1963.

Sec. 18

The resurvey and remonumentation of certain original corner points were executed by Peter A. Peterson, Cadastral Surveyor, beginning April 25, 1966, and completed May 17, 1967, under Special Instructions dated May 3, 1957, and June 7, 1963, which provide for the surveys included under Group Nos. 350 and 511, Oregon, respectively.

Remonumentation under Group No. 350 in 1967.

Sec. 19
 Latitude 43° 43' 44.51"N.
 Longitude 123° 42' 13.30"W.

UNITED STATES DEPARTMENT OF THE INTERIOR
 BUREAU OF LAND MANAGEMENT
 Washington, D. C. February 20, 1970

This plat is strictly conformable to the approved field notes, and the survey, having been correctly executed in accordance with the requirements of law and the regulations of this Bureau, is hereby accepted.

For the Director
Clark J. Lamm

Chief, Division of Cadastral Survey