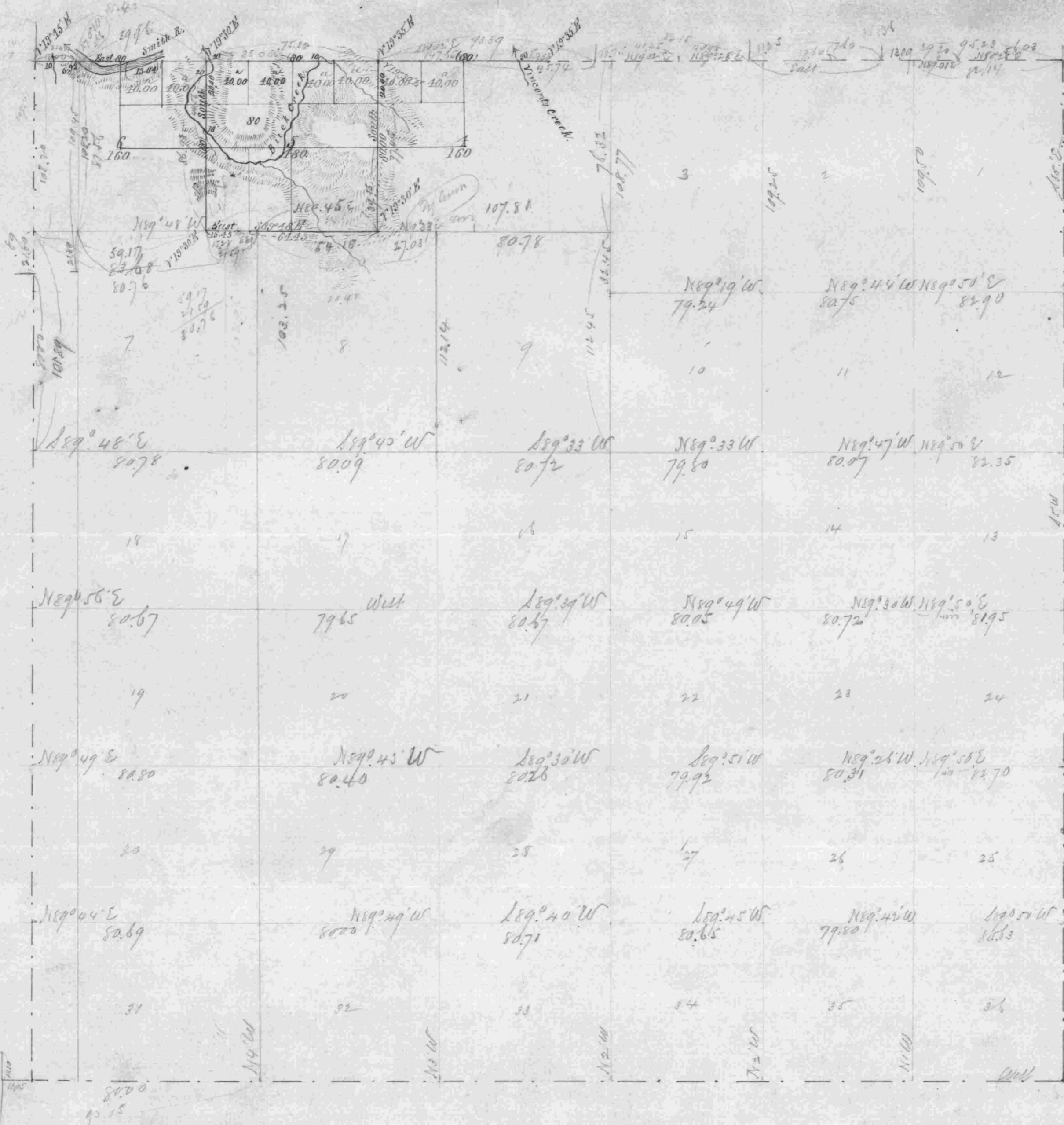


Township No. 21 South Range No. 9 West Willamette Meridian, Oregon.

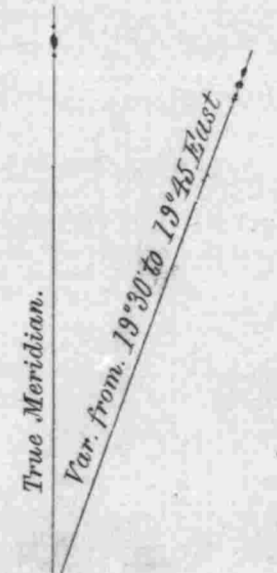
1250



Deposited to Credit of the United States in 1<sup>st</sup> National Bank Portland Oregon Dec. 16, 1878  
 By Fred Roghe For Field Work \$20.00  
 do. do. do Office do 10.00  
 Total \$30.00

Total Acres Acres 800.00

The above Map of the subdivisional lines of Tract S. 22 S. R. 9 W. Oregon is strictly conformable to the original field notes of the survey thereof on file in this office which have been examined and approved.  
 U. S. Surveyor General's Office  
 Portland Oregon  
 March 24 1879  
 James C. Tolman  
 Sur. Gen. of Oregon



Scale 40 Chains to an inch.

Lines.	Contractor.	Contract.		Amount Surveyed.			Commenced.	Completed.
		No.	Date.	Miles.	Chains.	Links.		
Subdivisions	William Thiel	260	April 17th 1877	1	15	43	June 18th 1877	June 18th 1877
Subdivisions	F. M. Johnson	314	Dec. 27 1878	1	67	43	February 19	Feb. 19 1879
Blue lines indicate Men surveys								

The above Map of the subdivisional lines of Tract S. 22 S. R. 9 W. Willamette Meridian, Oregon, is strictly conformable to the original field notes of the survey thereof on file in this office, which have been examined and approved.  
 U. S. Surveyor General's Office,  
 Portland, Oregon,  
 July 3<sup>d</sup> 1878.  
 James C. Tolman  
 Surveyor General of Oregon.