

TOWNSHIP 21 SOUTH, RANGE 8 WEST, OF THE WILLAMETTE MERIDIAN, OREGON
DEPENDENT RESURVEY AND SUBDIVISION OF SECTION 12

FILED
Date: 2/3/2015 By: JC
This survey consists of:
Map: PLAT: T21-8 2014-1
Narrative: LINE NOTES: VOL 58
Corner Rpt: PGS 23114-23123
DOUGLAS COUNTY
SURVEYOR

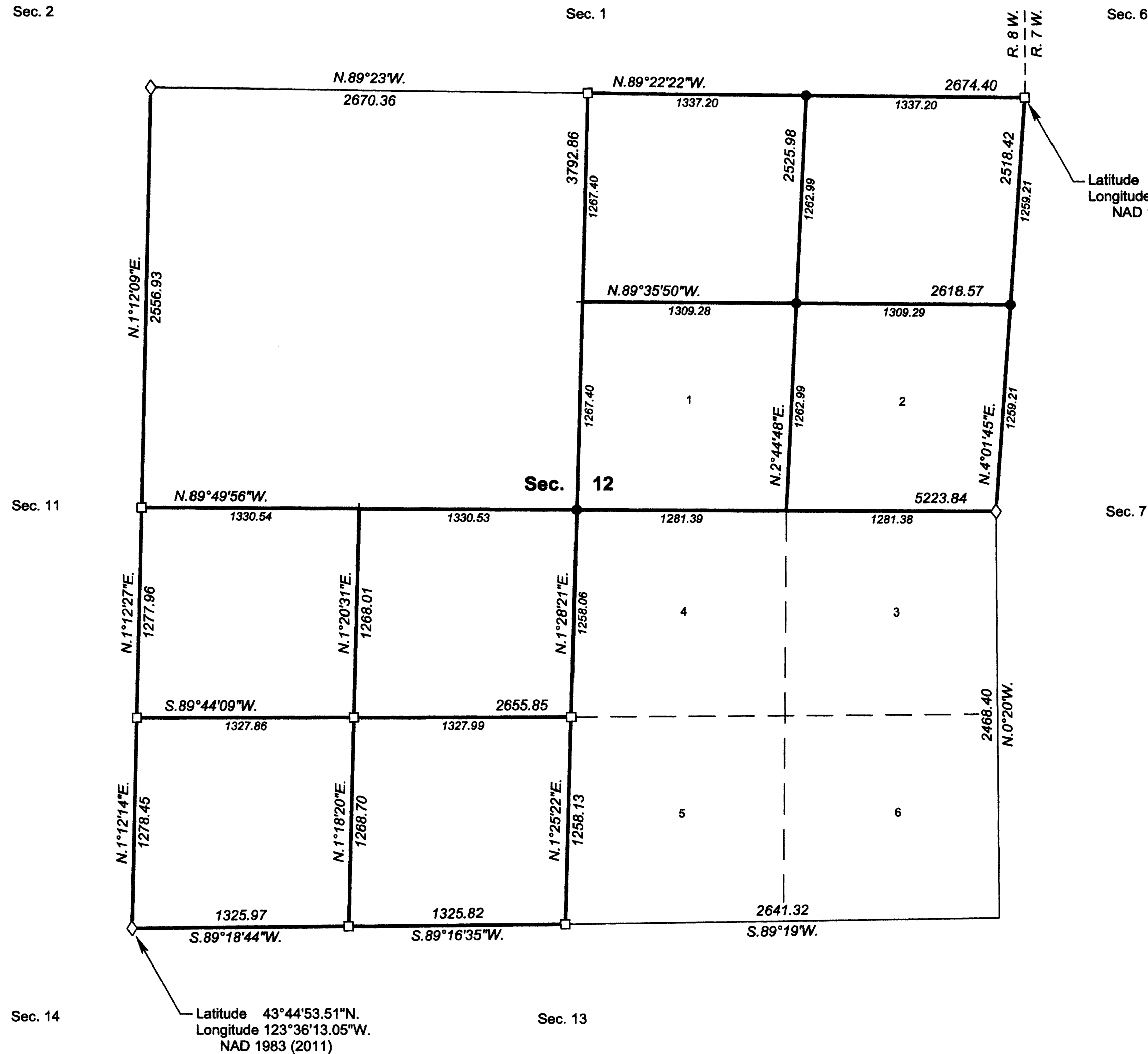
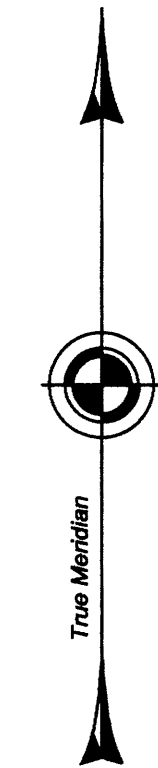
A history of surveys, corner descriptions, and other relevant information are contained in the field notes.

This plat represents the dependent resurvey of a portion of the west boundary, Township 21 South, Range 7 West, and the dependent resurvey of a portion of the subdivisional lines, Township 21 South, Range 8 West, Willamette Meridian, Oregon, designed to restore the corners in their true original locations according to the best available evidence, and the subdivision of section 12.

Official areas based on the measurements of this survey have been returned for Federal interest land where indicated. Aliquot part legal subdivisions retain their aliquot characteristics and refer to precisely the same land as that which was previously identified by its original survey or description. A lot can only be subdivided by survey or supplemental plat. Except as indicated hereon, the lottings and areas are as shown on the plat approved August 4, 1884, and the plat accepted April 14, 1960.

Survey executed by Joseph M. Mannix, Cadastral Surveyor, beginning August 6, 2013, and completed October 21, 2013, pursuant to special instructions approved July 30, 2013, for Group No. 2720, Oregon.

NOTE:
The lightweight lines with bearings and distances were surveyed by Marvin J. Lytle, Palmer Norseth, Thomas A. Tillman, Raymond M. Bicknell, Joseph S. Gawron and Hans W. Thielsen in 1952-54.



LEGAL SUBDIVISION	OFFICIAL ACRES
SECTION 12	
NW1/4 NE1/4	38.42
LOT 1	37.60
LOT 2	37.44
NE1/4 NW1/4	38.90
NW1/4 NW1/4	39.07
SW1/4 NW1/4	38.99
SE1/4 NW1/4	38.82
NE1/4 SW1/4	38.53
NW1/4 SW1/4	38.83
LOT 3	36.77
LOT 4	37.10
LOT 5	37.66
LOT 6	37.33
TOTAL AREA	495.46
FEDERAL INTEREST LAND RESURVEYED	

LEGEND	
◇	Original corner previously remonumented
□	Corner previously established or reestablished
●	Corner established or reestablished this survey
+	Corner point calculated, no monument set

UNITED STATES DEPARTMENT OF THE INTERIOR
BUREAU OF LAND MANAGEMENT

Portland, Oregon

This plat is strictly conformable to the approved field notes, and the survey, having been correctly executed in accordance with the requirements of law and the regulations of this Bureau, is hereby accepted.

For the Director

Mary J. M. Hantel

Chief Cadastral Surveyor of Oregon

November 7, 2014

Date

