

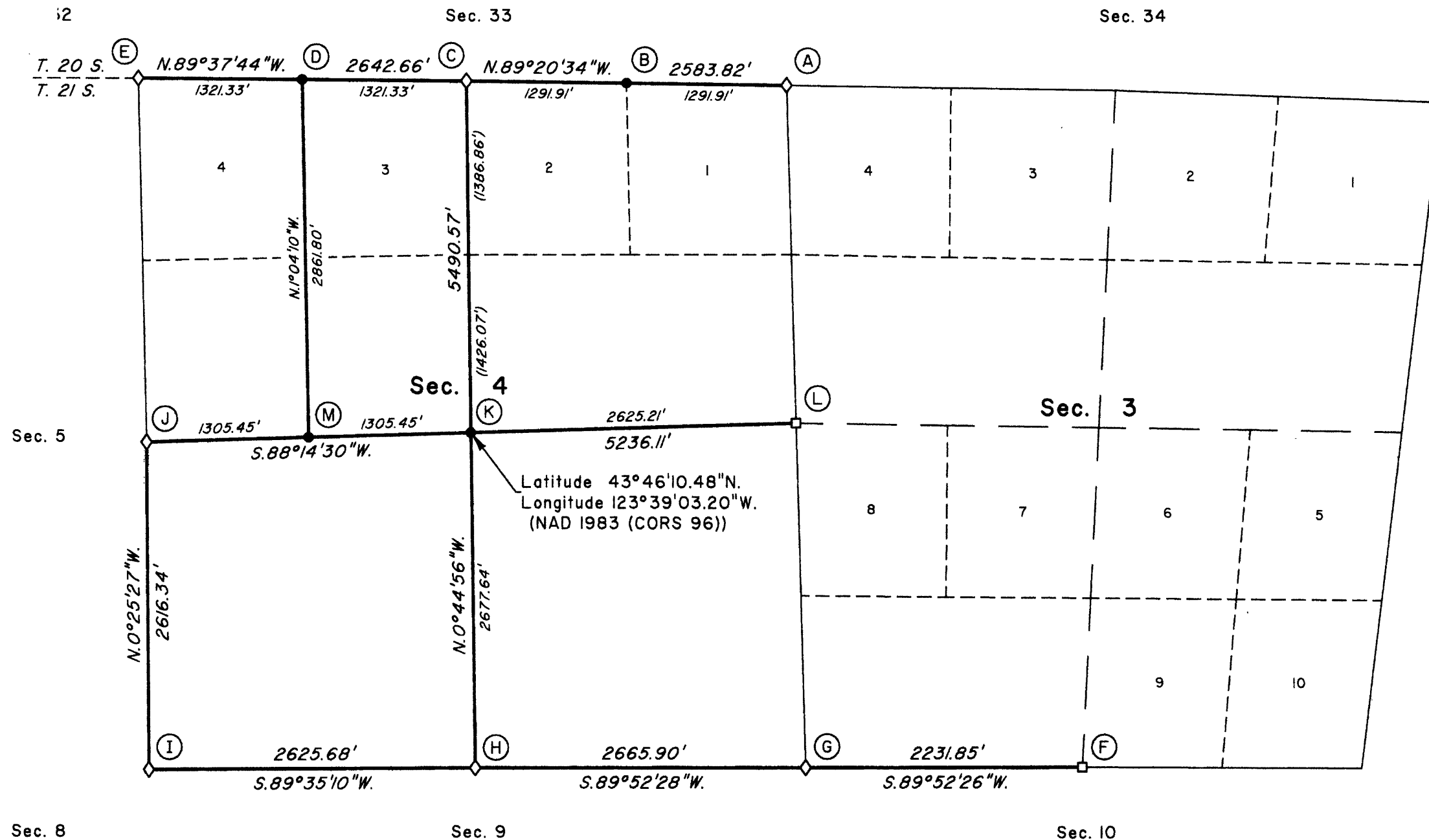
FILED
 Date: 4/25/2011 By: JC
 This survey consists of:
 Map: T21-8 2011-01; 2011-02; 2011-03
 Narrative: VOL 56
 Corner Rpt: 22263-22265

TOWNSHIP 21 SOUTH, RANGE 8 WEST, OF THE WILLAMETTE MERIDIAN, OREGON

SHEET 1 OF 3

DEPENDENT RESURVEY AND SUBDIVISION OF SECTION 4

DOUGLAS COUNTY
 SURVEYOR



The history of surveys pertaining to this survey is as follows:

In 1883, William P. Wright, U.S. Deputy Surveyor, surveyed the north boundary of the township and subdivisional lines, as shown on the official plat of survey approved August 4, 1884.

In 1945, Norman D. Price, Cadastral Engineer, and George F. Rigby, Associate Cadastral Engineer, resurveyed a portion of the north boundary of the township and subdivisional lines, as shown on the official plat of survey accepted March 10, 1947.

In 1950, Thomas A. Tillman, Cadastral Engineer, resurveyed a portion of the north boundary of the township, as shown on the official plat of survey of Township 20 South, Range 8 West, accepted February 7, 1952.

In 1952-54, Marvin J. Lytle, Palmer Norseth, Thomas A. Tillman, Raymond M. Bicknell, Joseph S. Gawron, and Hans W. Thielsen, Cadastral Engineers, resurveyed a portion of the subdivisional lines, as shown on the official plat of survey accepted April 14, 1960.

In 1967, William W. Glenn, C. Albert White, and James E. Jelley, Cadastral Surveyors, remonumented certain original corner points without survey on the north boundary of the township, as shown in the official field notes of Township 20 South, Range 8 West, approved March 3, 1977.

In 1999-2000, Aaron M. Graham, Cadastral Surveyor, remonumented and rehabilitated certain corner points without survey, as shown in the official field notes approved February 13, 2003.

In 2005, Aaron M. Graham, Cadastral Surveyor, rehabilitated certain corner points on the north boundary of the township without survey, as shown in the official field notes of Township 20 South, Range 8 West, approved January 30, 2009.

The following surveys filed in the Douglas County Surveyor's Offices are referred to in the subsequent corner descriptions and are referenced by the surveyor's last name and year.

Date	Surveyor and PLS/PE No.	County Survey No.
1968	Ronald E. Stuntzner, PE 6245	CS File No. 55/99 (GCDB No. 400700)
1981	Stephen J. Flause, Deputy Douglas County Surveyor	CS File No. 61/19 (GCDB No. 340600)
1984	Daniel W. Baker, PLS 1978	Map No. 97-51 and CS File No. 58/289-3K, 3M, 3N

This plat represents the entire record of the dependent resurvey of a portion of the north boundary and subdivisional lines, T. 21 S., R. 8 W., Willamette Meridian, Oregon, designed to restore the corners in their true original locations according to the best available evidence, and the subdivision of section 4.

Preliminary to the resurvey, the lines of the prior surveys were retraced and a search was made for all corners and other calls of record. The retracement data were thoroughly verified and only the true line field data are given hereon. Only those lines bounding or crossing public land were blazed.

The directions of the lines are based on the true meridian as determined by direct solar observation.

The survey was performed using a combination of GPS satellite techniques and terrestrial measurements. The GPS measurements utilized dual frequency carrier phase receivers and were executed in accordance with the 'Standards and Guidelines for Cadastral Surveys Using Global Positioning System Methods', dated May of 2001, published by the U.S.D.A. Forest Service and U.S.D.I. Bureau of Land Management.

An analysis of the unadjusted field data assured a closure not exceeding 1:4000 in error. The static GPS measurements and the terrestrial distances and directions have been adjusted using computer software that incorporates a least squares adjustment routine. The adjusted bearings and distances are reported to the nearest second and 0.01 foot.

The geographic position shown hereon was determined by ties from temporary Global Positioning System (GPS) control points, established utilizing dual frequency, carrier phase GPS receivers, and processed using the National Geodetic Survey's Online Positioning User Service (OPUS).

The official lottings and areas of federal interest lands are as shown on the plat approved August 4, 1884.

Each new bearing tree has a 2 1/2 inch x 1/4 inch magnetic nail (Mag Nail) driven at the base on right side center.

The survey was executed by Edith M. Forkner, Cadastral Surveyor, beginning August 24, 2009, and completed February 9, 2010, in accordance with the specifications set forth in the Manual of Surveying Instructions, 1973; pursuant to Special Instructions dated July 29, 2009, approved August 10, 2009, which provided for the survey included under Group No. 2285, Oregon, and Assignment Instructions dated August 10, 2009. She was assisted by Keith G. Felker, Surveying Technician, and Jason H. Blum and Josh A. Varland, Laborers.

UNITED STATES DEPARTMENT OF THE INTERIOR
 BUREAU OF LAND MANAGEMENT

Portland, Oregon

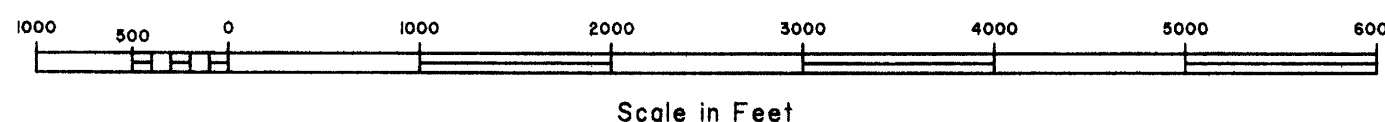
This plat, which constitutes the entire record of this survey, having been correctly executed in accordance with the requirements of law and the regulations of this Bureau, is hereby accepted.

For the Director

Maury J. M. Hartzel

Chief Cadastral Surveyor of Oregon

February 23, 2011
 Date



OFFICIALLY FILED: 4/13/2011

FILED

Date: 4/25/2011 By: JC
This survey consists of:
Map: T21-8 2011-01; 2011-02; 2011-03
Narrative: VOL 56
Corner Rpt: 22263-22265

TOWNSHIP 21 SOUTH, RANGE 8 WEST, OF THE WILLAMETTE MERIDIAN, OREGON

SHEET 2 OF 3

DOUGLAS COUNTY
SURVEYOR

DEPENDENT RESURVEY AND SUBDIVISION OF SECTION 4

(A) The cor. of secs. 3, 4, 33, and 34, on the N. bdy. of the Tp., remonumented by Price and Rigby in 1945, utilized by Tillman in 1950, rehabilitated by Glenn, et al., in 1967, and by Stuntzner, PE No. 6245, in 1968; monumented with an iron post, 2 ins. diam., firmly set, projecting 11 ins. above ground, with brass cap mkd.

T 20 S	R 8 W
S 33	S 34
S 4	S 3
T 21 S	
1945	

from which the remains of the original bearing trees

A burned decayed fir stump, size indeterminate, bears S. 44 3/4° E., 23.8 ft. dist., no marks visible.

The remains of a fir stump, size indeterminate, bears S. 24 1/2° W., 16.5 ft. dist., no marks visible.

and the remains of the bearing trees mkd. by Price and Rigby

A burned decayed fir stump, 25 ins. diam., bears S. 70° W., 28.4 ft. dist., no marks visible.

A burned decayed fir stump, 25 ins. diam., bears N. 61° W., 39.6 ft. dist., with scribe marks 3 BT and other illegible scribe marks visible on open blaze.

and the remains of a bearing tree mkd. by Glenn, et al.

The remains of a fir stump, size indeterminate, bears N. 4° E., 31.7 ft. dist., no marks visible. (Record, N. 11° E.)

and the remains of the bearing trees mkd. by Stuntzner, PE No. 6245

A decayed fir stump, 26 ins. diam., bears N. 37 3/4° E., 50.0 ft. dist., no marks visible.

A decayed fir stump, 47 ins. diam., bears S. 46 1/2° E., 88.9 ft. dist., with scribe marks S3 R8W visible on bark.

and new bearing trees

A fir, 11 ins. diam., bears N. 49° E., 54.4 ft. dist., mkd. T20S R8W S34 BT.

A fir, 14 ins. diam., bears S. 13 1/2° E., 15.0 ft. dist., mkd. T21S R8W S3 BT.

A fir, 13 ins. diam., bears S. 44 1/4° W., 26.3 ft. dist., mkd. T21S R8W S4 BT.

A fir, 9 ins. diam., bears N. 66° W., 24.4 ft. dist., mkd. T20S R8W S33 BT.

A steel fence post with a BLM bearing tree tag is alongside the cor.

Corner is located in young timber, on the W. edge near the S. end of a strip of land with no timber and dense undergrowth, 50 ft. wide, bears N.

(B) Point for the E 1/16 sec. cor. of secs. 4 and 33, on the N. bdy. of the Tp.

Set a stainless steel post, 28 ins. long, 2 1/2 ins. diam., 26 ins. in the ground, with brass cap mkd.

S 33	
E 1/16	S 4
2009	

from which

A fir, 15 ins. diam., bears S. 26° W., 1.5 ft. dist., mkd. E1/16 S4 BT.

A fir, 10 ins. diam., bears N. 42 1/2° W., 12.3 ft. dist., mkd. E1/16 S33 BT.

Deposit a magnet in a white plastic case at the base of the stainless steel post.

Corner is located in the root, 6 ins. diam., of the SW. bearing tree, at the bottom of descent of a S. facing slope.

(C) The 1/4 sec. cor. of secs. 4 and 33, on the N. bdy. of the Tp., remonumented by Price and Rigby in 1945, rehabilitated by Glenn, et al., in 1967, and by Graham in 2005; monumented with an iron post, 1 in. diam., firmly set, projecting 12 ins. above ground, with a brass cap mkd.

S 33	
1/4	S 4
1945	

from which the remains of the bearing trees mkd. by Price and Rigby

A decayed burned fir snag, 62 ins. diam., bears N. 18 3/4° E., 36.3 ft. dist., no marks visible.

A burned fir stump, 62 ins. diam., bears S. 43 1/2° W., 66.0 ft. dist., no marks visible.

and the remains of a bearing tree mkd. by Glenn, et al.

An alder root collar, 33 ins. diam., bears N. 49 1/2° W., 34.0 ft. dist., no marks visible.

and the bearing trees mkd. by Graham

A fir, 13 ins. diam., bears N. 1/4° E., 20.0 ft. dist., with a healed blaze. (Record, N. 1 1/2° W.)

A fir, 13 ins. diam., bears S. 64 3/4° E., 15.8 ft. dist., with a healed blaze. (Record, S. 67° E.)

A steel fence post is alongside the cor.

(D) Point for the W 1/16 sec. cor. of secs. 4 and 33, on the N. bdy. of the Tp.

Set a stainless steel post, 28 ins. long, 2 1/2 ins. diam., 24 ins. in the ground, with brass cap mkd.

S 33	
W 1/16	S 4
2009	

from which

A fir, 13 ins. diam., bears S. 41° W., 16.0 ft. dist., mkd. W 1/16 S4 BT.

A fir, 14 ins. diam., bears N. 5° W., 17.7 ft. dist., mkd. W 1/16 S33 BT.

Deposit a magnet in a white plastic case at the base of the stainless steel post.

Corner is located N., 130 ft. from a spur, slopes E.

(E) The cor. of secs. 4, 5, 32, and 33, on the N. bdy. of the Tp., remonumented by Price and Rigby in 1945, by Glenn, et al., in 1967; and rehabilitated by Graham in 2005; monumented with an iron post, 2 1/2 ins. diam., firmly set, projecting 8 ins. above ground, with a brass cap mkd.

T 20 S	R 8 W
S 32	S 33
S 5	S 4
T 21 S	
1967	

from which the remains of an original bearing tree

A root hole bears S. 62° W., 4.0 ft. dist.

and the remains of a bearing tree mkd. by Price and Rigby

A burned fir snag, 54 ins. diam., bears S. 61° E., 43.6 ft. dist., with scribe marks T21S R8W visible on open blaze.

and the remains of the bearing trees mkd. by Glenn, et al.

A cedar stump, 42 ins. diam., bears N. 1/4° E., 73.3 ft. dist., with scribe marks T20S R8W S33 BT visible on open blaze.

A cedar stump, 57 ins. diam., bears N. 56° W., 114.8 ft. dist., with scribe marks T20S R8W S32 BT visible on open blaze. (Record, stump, 47 ins. diam.)

and the bearing trees mkd. by Graham

A fir, 10 ins. diam., bears S. 82° E., 29.7 ft. dist., with a healed blaze and a Mag Nail on the right side center. (Record, 30.1 ft. dist.)

A fir, 18 ins. diam., bears S. 1/2° W., 14.6 ft. dist., with illegible scribe marks visible on partially healed blaze and a Mag Nail on the right side center.

A fir, 15 ins. diam., bears N. 56 1/2° W., 25.2 ft. dist., with a healed blaze and a Mag Nail on the right side center.

Corner is located S., 50 ft. from a draw, drains S. 75° E.

No suitable bearing trees within limits in sec. 33.

(F) The 1/4 sec. cor. of secs. 3 and 10, reestablished by Lytle, et al., in 1952-54, utilized by Glenn, et al., in 1967, and by Baker, PLS No. 1978, in 1984; monumented with an iron post, 1 in. diam., firmly set, projecting 12 ins. above ground, with a brass cap mkd.

S 3	
1/4	S 10
1954	

from which the remains of the bearing trees mkd. by Lytle, et al.

A fir stump, 36 ins. diam., bears N. 7 3/4° E., 27.1 ft. dist., with a healed blaze at waist height.

A scarred fir, 15 ins. diam., bears S. 20 3/4° W., 19.8 ft. dist., with a healed blaze at knee height and other healed blazes. (Record, S. 22 1/4° W.)

and a reference established by person(s) unknown and reported by Baker, PLS No. 1978

A rusty iron post, 1 1/2 ins. diam., firmly set, projecting 13 ins. above ground, bears S. 40° 17' 52" E., 4.06 ft. dist.

and a new bearing tree

A fir, 12 ins. diam., bears N. 79° E., 36.3 ft. dist., mkd. 1/4 S3 BT.

A steel fence post with a U.S. Forest Service tag and two International Paper Company tags is alongside the cor.

Corner is located at the center of the N. edge of a triangular patch of a dozen mature fir trees in otherwise dense fir reproduction.

(G) The cor. of secs. 3, 4, 9, and 10, remonumented by Price and Rigby in 1945, utilized by Lytle, et al., in 1952-54, and by Glenn, et al., in 1967, rehabilitated by Baker, PLS No. 1978, in 1984, and by Graham in 1999-2000; monumented with an iron post, 2 ins. diam., firmly set, projecting 3 ins. above ground, with a brass cap, oriented W., mkd.

T 21 S	R 8 W
S 4	S 3
S 9	S 10
1945	

from which the remains of the original bearing trees

A decayed fir stump, 37 ins. diam., bears N. 39° E., 14.5 ft. dist., with the bottom of a healed blaze.

A root hole bears S. 70° W., 25.7 ft. dist., alongside of which are decayed fir remains.

A decayed fir stump, 24 ins. diam., bears N. 80° W., 10.6 ft. dist., with scribe marks BT visible on open blaze.

and the remains of a bearing tree mkd. by Price and Rigby

A decayed fir stump, 30 ins. diam., bears S. 69° E., 26.4 ft. dist., with burned remains of a healed blaze.

and the bearing trees mkd. by Graham

A fir, 14 ins. diam., bears N. 70 1/2° E., 15.5 ft. dist., with a healed blaze.

A fir, 15 ins. diam., bears S. 29° E., 30.2 ft. dist., with a healed blaze.

A fir, 16 ins. diam., bears S. 68° W., 29.8 ft. dist., with a healed blaze.

A fir, 13 ins. diam., bears N. 31 1/2° W., 23.6 ft. dist., with a healed blaze.

A steel fence post with an International Paper Company tag is alongside the cor.

Corner is located on the flat top of a knob, N. 65° W., 25 ft. from the center, and E., 250 ft., from Paradise Creek Road, graveled surface, 15 ft. wide, bearing N. 30° W. and S. 30° E.

UNITED STATES DEPARTMENT OF THE INTERIOR
BUREAU OF LAND MANAGEMENT

Portland, Oregon

This plat, which constitutes the entire record of this survey, having been correctly executed in accordance with the requirements of law and the regulations of this Bureau, is hereby accepted.

For the Director

Mary J. H. Hester

Chief Cadastral Surveyor of Oregon

February 22, 2011
Date

OFFICIALLY FILED: 4/13/2011

TOWNSHIP 21 SOUTH, RANGE 8 WEST, OF THE WILLAMETTE MERIDIAN, OREGON

DEPENDENT RESURVEY AND SUBDIVISION OF SECTION 4

(H) The 1/4 sec. cor. of secs. 4 and 9, remonumented by Price and Rigby in 1945, utilized by Glenn, et al., in 1967, found lying loose and reset by Flause, Deputy Douglas County Surveyor, with the 1945 GLO monument in 1981; monumented with an iron post, 1 in. diam., firmly set, projecting 1 in. above ground, with a brass cap mkd.

RESET
S 4
1/4
S 9
DCSO
1981
1945

from which the remains of the original bearing trees

A roothole bears North, 18.5 ft. dist., alongside of which is a down cedar, 45 ins. diam., no marks visible.

A fir, 56 ins. diam., bears S. 10° W., 12.5 ft. dist., with axe marks visible on open decayed blaze.

and the remains of a bearing tree mkd. by Price and Rigby

A roothole bears N. 41° W., 50.2 ft. dist., downhill of which is a fir rootwad, no marks visible.

and the bearing trees mkd. by Flause, Deputy Douglas County Surveyor

A fir, 28 ins. diam., bears N. 51 1/2° W., 37.4 ft. dist., with a healed blaze.

A hemlock, 19 ins. diam., bears N. 22° W., 14.0 ft. dist., with scribe marks 1/4 and other illegible scribe marks visible on bark.

A steel fence post is alongside the cor.

Corner is located W., 40 ft. from Blind Creek, 6 ft. wide, course N., on the W. side of bottom land, 30 ft. wide.

(I) The cor. of secs. 4, 5, 8, and 9, remonumented by Price and Rigby in 1945, and by Glenn, et al., in 1967; monumented with an iron post (Record, fiberglass), 2 1/2 ins. diam., firmly set, projecting 11 ins. above ground, with a brass cap mkd.

T 21 S R 8 W
S 5 S 4
S 8 S 9
1967

from which the remains of an original bearing tree

A burned decayed fir stump, size indeterminate, bears N. 57° W., 9.9 ft. dist., no marks visible.

and the remains of a bearing tree mkd. by Price and Rigby

A fir snag, 34 ins. diam., bears S. 46 1/2° W., 63.4 ft. dist., with scribe marks T21S R8W S8 BT visible on open blaze.

and a bearing object mkd. by Glenn and Jelley

A sandstone outcrop bears S. 27° E., 95.4 ft. dist., no marks visible on flaking surface. (Record, S. 28° E., 105.6 ft. dist.)

and new bearing trees

A fir, 17 ins. diam., bears N. 17 1/2° E., 9.4 ft. dist., mkd. T21S R8W S4 BT.

A fir, 7 ins. diam., bears S. 17° E., 1.9 ft. dist., mkd. X at breast height BT.

A fir, 8 ins. diam., bears S. 69 3/4° W., 12.8 ft. dist., mkd. T21S R8W S8 BT.

A fir, 11 ins. diam., bears N. 67 1/2° W., 13.8 ft. dist., mkd. T21S R8W S5 BT.

A steel fence post is 3 ft. downhill from the cor.

Corner is located on a steep E. slope, W., 50 ft. from a gully, drains W.

(J) The 1/4 sec. cor. of secs. 4 and 5, remonumented by Price and Rigby in 1945, and by Glenn, et al., in 1967; monumented with an iron post (Record, fiberglass), 2 1/2 ins. diam., firmly set, projecting 4 ins. above ground, with a brass cap mkd.

1/4
S 5 S 4
1967

from which the remains of an original bearing tree

A fir snag, splitting, 73 ins. diam., bears N. 22° E., 19.1 ft. dist., with a healed blaze.

and new bearing trees

A fir, 17 ins. diam., bears N. 77 1/2° E., 17.0 ft. dist., mkd. 1/4 S4 BT.

A fir, 16 ins. diam., bears S. 23 1/2° W., 17.0 ft. dist., mkd. 1/4 S5 BT.

A steel fence post is alongside the cor.

Corner is located W., 460 ft. from Big Creek Road, asphalt surface, 15 ft. wide, bearing S. 80° E. and S. 70° W., and N., 1045 ft. of same road, 20 ft. wide, bearing N. 55° E. and S. 65° W., and N., 1140 ft. from Big Creek, 15 ft. wide, course E., in bottom land 30 ft. wide.

(K) Point for the center 1/4 sec. cor. of sec. 4, at intersection of the N. and S., and E. and W. center lines.

Set a stainless steel post, 28 ins. long, 2 1/2 ins. diam., 24 ins. in the ground, with brass cap mkd.

T 21 S R 8 W
C 1/4 S 4
2009

from which

A fir, 14 ins. diam., bears N. 12° E., 12.7 ft. dist., mkd. C1/4 S4 BT.

A fir, 9 ins. diam., bears S. 28 3/4° W., 8.0 ft. dist., mkd. X at breast height BT.

Deposit a magnet in a white plastic case at the base of the stainless steel post.

Corner is located on nearly level ground in young timber with no undergrowth.

(L) The 1/4 sec. cor. of secs. 3 and 4, reestablished by Price and Rigby in 1945, utilized by Glenn, et al., in 1967, and rehabilitated by Baker, PLS No. 1978, in 1984; monumented with an iron post, 1 in. diam., firmly set, projecting 2 ins. above ground, with a brass cap mkd.

1/4
S 4 S 3
1945

from which the remains of the bearing trees mkd. by Price and Rigby

A burned decayed fir stump, 37 ins. diam., bears S. 64 1/2° E., 31.7 ft. dist., no marks visible.

A burned decayed fir stump, size indeterminate, bears N. 47 1/2° W., 23.8 ft. dist., with a healed blaze fallen off stump.

and the remains of the bearing trees mkd. Baker, PLS 1978

A fir snag, 7 ins. diam., bears N. 68° E., 17.9 ft. dist., with scribe marks 1/4 S3 visible on open decayed blaze.

A fir snag, 8 ins. diam., bears N. 63° W., 14.5 ft. dist., with a healed blaze.

and new bearing trees

A fir, 13 ins. diam., bears S. 85° E., 9.0 ft. dist., mkd. 1/4 S3 BT.

A fir, 21 ins. diam., bears S. 55 1/2° W., 9.3 ft. dist., mkd. 1/4 S4 BT.

A steel fence post with a U.S. Forest Service tag is alongside the cor.

Corner is located S., 40 ft. from a sharp spur, 40 ft. wide, nearly level, slopes S. 70° W.

(M) Point for the center W 1/16 sec. cor. of sec. 4.
Set a stainless steel post, 28 ins. long, 2 1/2 ins. diam., 25 ins. in the ground, with brass cap mkd.

W 1/16
C C
S 4
2009

from which

A fir, 20 ins. diam., bears S. 70° E., 23.2 ft. dist., mkd. CW1/16 S4 BT.

A fir, 19 ins. diam., bears N. 3° W., 10.4 ft. dist., mkd. X at breast height BT.

Deposit a magnet in a white plastic case at the base of the stainless steel post.

Corner is located alongside the root wad of two down firs, both 1 1/2 ft. diam., and N., 10 ft., from another down fir, 1 1/2 ft. diam., and E., 115 ft. from a natural drainage ditch, 1 ft. wide, 2 ft. deep, course S. 15° E.

FILED

Date: 4/25/2011 By: JC

This survey consists of:

Map: T21-8 2011-01; 2011-02; 2011-03

Narrative: VOL 56

Corner Rpt: 22263-22265

DOUGLAS COUNTY SURVEYOR

UNITED STATES DEPARTMENT OF THE INTERIOR
BUREAU OF LAND MANAGEMENT

Portland, Oregon

This plat, which constitutes the entire record of this survey, having been correctly executed in accordance with the requirements of law and the regulations of this Bureau, is hereby accepted.

For the Director

Mary G. W. Harte

Chief Cadastral Surveyor of Oregon

February 22, 2011

Date