

TOWNSHIP 21 SOUTH, RANGE 8 WEST, OF THE WILLAMETTE MERIDIAN, OREGON

CORRECTIVE DEPENDENT RESURVEY

(A) The cor. of secs. 10, 11, 14, and 15, perpetuated by Lytle et. al., in 1952-54; monumented with an iron post, 2 ins. diam., firmly set, projecting 10 ins. above ground, with brass cap mkd.

T 21 S	R 8 W
S 10	S 11
S 15	S 14
1952	

from which the remains of an original bearing tree

A decayed hemlock stump, size indeterminate, bears S. 50° W., 6.6 ft. dist., no marks visible.

and the remains of the bearing trees mkd. by Lytle, et al.

A roothole bears N. 56 1/2° E., 50.2 ft. dist., alongside of which is a down cedar, 20 ins. diam., no marks visible.

A fir stump, 42 ins. diam., bears S. 35° W., 84.5 ft. dist., with scribe marks R8W S15 BT visible on detached unhealed blaze.

A fir stump, 48 ins. diam., bears N. 23° W., 48.2 ft. dist., no marks visible.

and the remains of a bearing tree mkd. by Glenn and Jelley in 1967

A decayed fir stump, 24 ins. diam., bears N. 21 1/2° E., 25.8 ft. dist., with scribe marks 8 S11 BT and other illegible scribe marks visible on open blaze. (Record, N. 23° E., 27.1 ft. dist.)

and bearing trees mkd. by Gary T. Smither, Professional Land Surveyor No. 2485, in 2006, on file in the Douglas County Surveyor's Office under Map File No. M151-44

A fir, 13 ins. diam., bears N. 1° E., 9.8 ft. dist., with scribe marks T21 R8 S10 BT visible on unhealed blaze.

A fir, 11 ins. diam., bears N. 71 3/4° E., 6.4 ft. dist., with scribe marks T21 R8 S11 BT visible on unhealed blaze.

A fir, 17 ins. diam., bears S. 43 1/2° E., 19.4 ft. dist., with scribe marks T21 R8 S14 BT visible on unhealed blaze.

and the remains of a bearing tree mkd. by person(s) unknown and reported by Smither in 2006

A fir, 10 ins. diam., bears S. 59 1/2° W., 11.3 ft. dist., with a healed blaze.

A steel fence post is alongside the cor.

Corner is located on a spur ridge, slopes N.

(B) Point for the 1/4 sec. cor. of secs. 11 and 14, at proportionate distance; there is no remaining evidence of the original corner.

Set a stainless steel post, 28 ins. long, 2 1/2 ins. diam., 24 ins. in the ground, with brass cap mkd.

T 21 S	R 8 W
S 11	S 14
1/4	
2007	

from which

A fir, 8 ins. diam., bears S. 24° W., 17.8 ft. dist., mkd. 1/4 S14 BT

A fir, 8 ins. diam., bears N. 81 1/4° W., 33.7 ft. dist., mkd. 1/4 S11 BT.

Deposit a magnet in a white plastic case at the base of the stainless steel post.

From this cor., a point erroneously established as the 1/4 cor. of secs. 11 and 14 by Lytle, et al., in 1952-54, and rehabilitated by Gary T. Smither, Professional Land Surveyor No. 2485, in 2006, on file in the Douglas County Surveyors Office under Map File No. M151-44, and was not accepted in this survey due to improper procedure, bears N. 88° 27' 33" E., 52.98 ft. dist.; monumented with an iron post, 1 in. diam., firmly set, projecting 10 ins. above ground, with brass cap mkd. S11 1/4 S14 1954. Remove these marks and remark the cap to read AM 53 FT TO COR 2007 with an arrow pointing to the corner.

(C) The cor. of secs. 11, 12, 13, and 14, perpetuated by Lytle et. al., in 1952-54; monumented with an iron post, 2 ins. diam., firmly set, projecting 10 ins. above ground, with brass cap mkd.

T 21 S	R 8 W
S 11	S 12
S 14	S 13
1954	

from which the remains of the original bearing trees

A maple, 26 ins. diam., bears N. 48° E., 19.8 ft. dist., with a partially healed hole through the base.

A maple, 16 ins. diam., bears S. 1/4° W., 34.3 ft. dist., with a healed blaze. (Record, S. 3 1/2° W.)

A fir stump, 57 ins. diam., bears N. 75° W., 21.8 ft. dist., with axe marks X at breast height.

and the remains of the bearing trees mkd. by Lytle, et al.

A hemlock snag, 30 ins. diam., bears S. 38 3/4° E., 73.9 ft. dist., with a healed blaze. (Record, S. 37 3/4° E.)

A fir, 35 ins. diam., bears S. 14° W., 57.4 ft. dist., with a healed blaze.

A cedar, 53 ins. diam., bears N. 29° W., 62.7 ft. dist., with a healed blaze.

An aluminum fence post is alongside the cor.

Corner is located 5 ft. N. of a rootwad.

This plat represents the entire record of the corrective dependent resurvey of a portion of the subdivisional lines, T. 21 S., R. 8 W., Willamette Meridian, Oregon, designed to restore the corners in their true original locations according to the best available evidence.

A history of surveys pertaining to this resurvey is as follows:

In 1883, William P. Wright, U.S. Deputy Surveyor, surveyed the subdivisional lines.

In 1952-54, Marvin J. Lytle, Palmer Norseth, Thomas A. Tillman, Raymond M. Bicknell, Joseph S. Gawron, and Hans W. Thielsen, Cadastral Engineers, resurveyed a portion of the subdivisional lines.

In 1967, William W. Glenn and James E. Jelley, Cadastral Surveyors, remonumented certain original corner points without survey.

In 2006, Aaron M. Graham, Cadastral Surveyor, documented in a report dated December 19, 2006, that the 1/4 sec. cor. of secs. 11 and 14, reestablished by Lytle et al., in 1952-54, was improperly located, necessitating this corrective survey.

This survey was executed by Aaron M. Graham, Cadastral Surveyor, beginning September 9, 2006 and completed April 5, 2007, pursuant to Special Instructions dated August 29, 2006, approved August 30, 2006, and Supplemental Special Instructions dated January 24, 2007, approved January 26, 2007, for Group Number 2150, Oregon, under Assignment Instructions dated September 9, 2006 and January 29, 2007. He was assisted by Edith M. Forkner, Cadastral Surveyor, and Byron L. Evans and Keith G. Felker, Surveying Technicians.

Preliminary to the resurvey, the lines of the prior surveys were retraced and a search was made for all corners and other calls of record. The retracement data were thoroughly verified and only the true line field data is given hereon.

The directions of the lines are based on the true meridian as determined by direct solar observation.

An analysis of the unadjusted field data assured a closure not exceeding 1:4000 in error. Measured distances and directions have been adjusted by computer software that incorporates a least squares adjustment routine. The adjusted bearings and distances are reported to the nearest second and 0.01 foot.

Each new bearing tree has a 2 1/2 inch x 1/4 inch magnetic nail (Mag Nail) driven at the base on right side center, unless otherwise noted in the corner description.

The geodetic position shown hereon was determined by a direct tie from a temporary GPS control point established using dual frequency carrier phase GPS receivers and processed using the National Geodetic Survey's Online Positioning User Service (OPUS).

UNITED STATES DEPARTMENT OF THE INTERIOR
BUREAU OF LAND MANAGEMENT

Portland, Oregon

This plat, which constitutes the entire record of this survey, having been correctly executed in accordance with the requirements of law and the regulations of this Bureau, is hereby accepted.

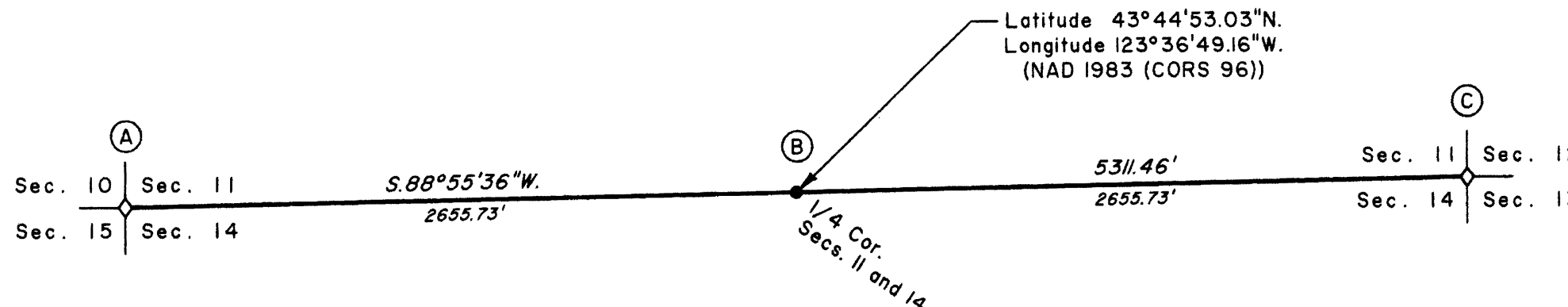
For the Director

Mary J. M. Hunt

Chief Cadastral Surveyor of Oregon

April 2, 2010

Date



I, Aaron M. Graham, Cadastral Surveyor, HEREBY CERTIFY upon honor, that in pursuance of Special Instructions bearing date of the 29th day of August, 2006, and Supplemental Special Instructions bearing date of the 24th day of January, 2007, I have correctively dependently resurveyed a portion of the subdivisional lines, Township 21 South, Range 8 West, Willamette Meridian, Oregon. Said survey has been made in strict conformity with said Special Instructions, the Manual of Instructions for the Survey of the Public Lands of the United States, 1973, and in specific manner described on this plat.

Aaron M. Graham
Cadastral Surveyor

March 29, 2007
Date



LEGEND

- ◊ Original corner previously remonumented
- Corner reestablished this survey