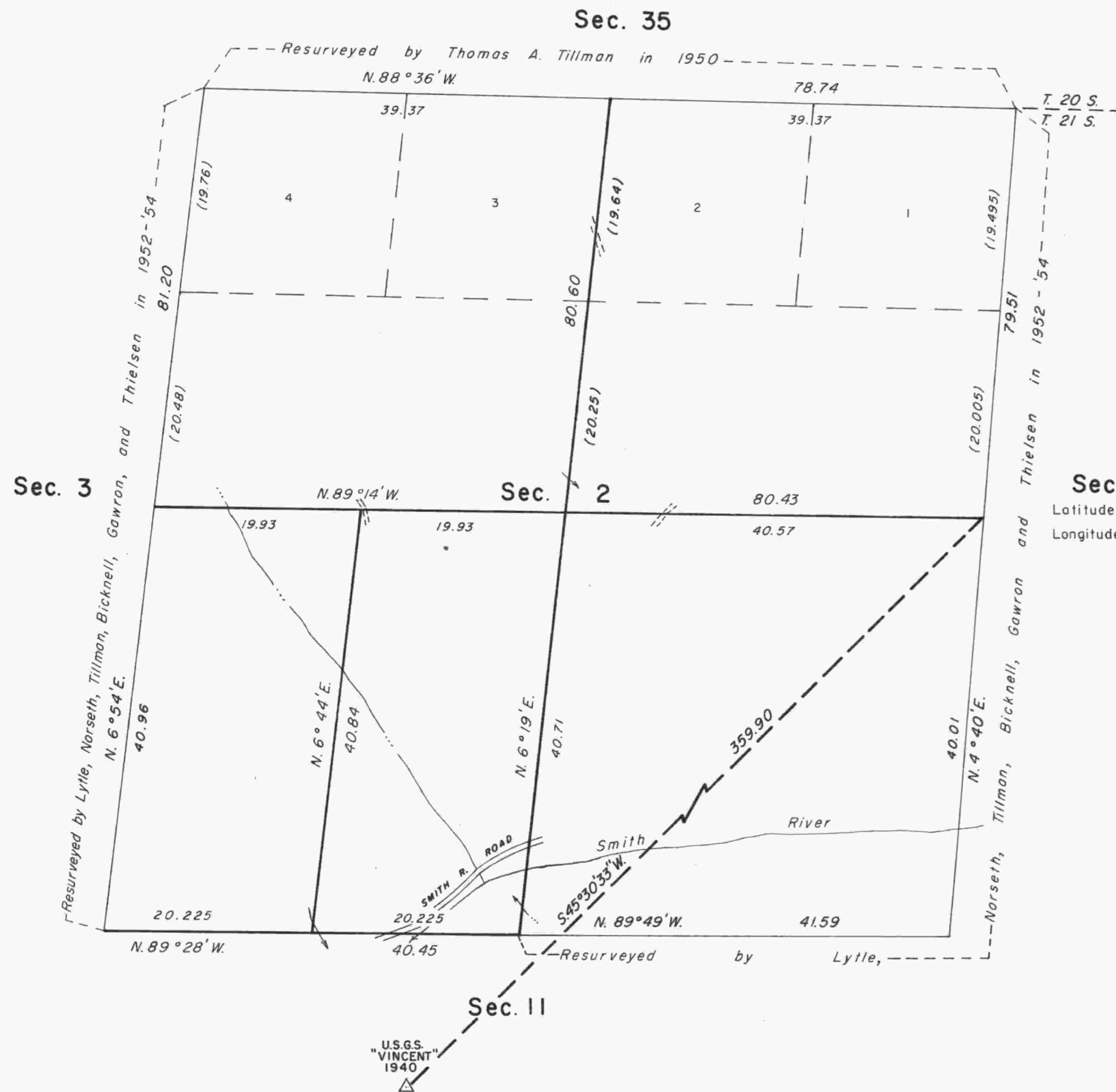


TOWNSHIP 21 SOUTH, RANGE 8 WEST, OF THE WILLAMETTE MERIDIAN, OREGON

DEPENDENT RESURVEY AND SUBDIVISION OF SECTION 2



A history of surveys is contained in the field notes.

This plat represents a dependent resurvey of a portion of the subdivisional lines, T. 21 S., R. 8 W., Willamette Meridian, Oregon, designed to restore the corners in their true original locations according to the best available evidence, and the subdivision of section 2.

The lottings and areas are as shown on the plat approved August 4, 1884.

The survey was executed by Joel E. Robb, Cadastral, Surveyor, beginning August 9, 1983, and completed September 12, 1983, pursuant to Special Instructions dated July 27, 1983, under Group No. 1171, Oregon.

Timber in this area consists of fir, cedar, hemlock, madrone, alder, and maple.

UNITED STATES DEPARTMENT OF THE INTERIOR
BUREAU OF LAND MANAGEMENT
Portland, Oregon September 27, 1985

This plat is strictly conformable to the approved field notes, and the survey, having been correctly executed in accordance with the requirements of law and the regulations of this Bureau, is hereby accepted.

For the Director

William W. Glenn

Chief Cadastral Surveyor of Oregon