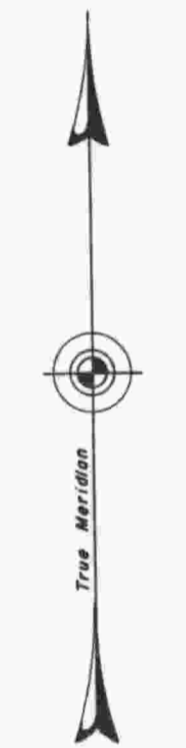
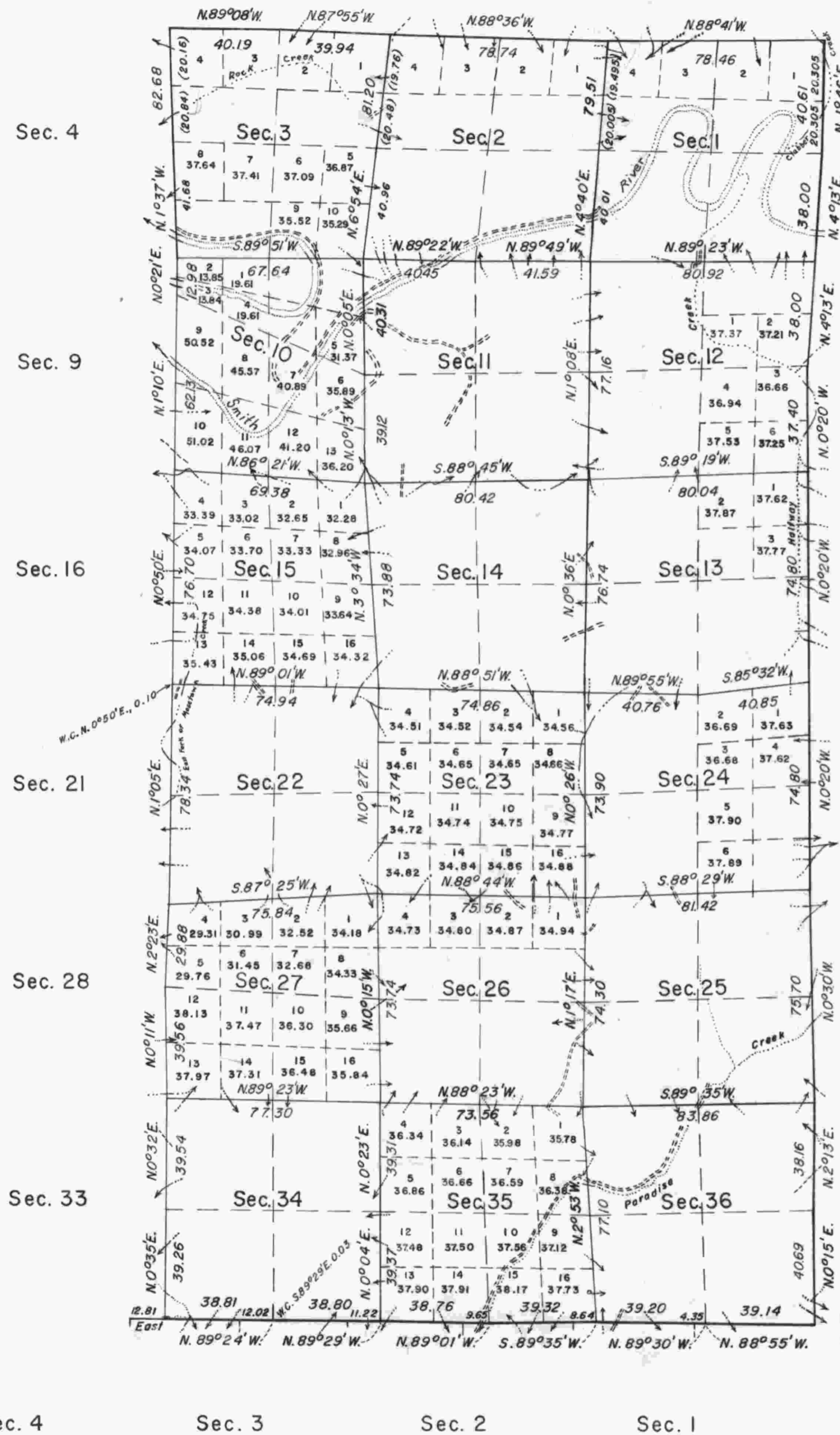


TOWNSHIP 21 SOUTH, RANGE 8 WEST, OF THE WILLAMETTE MERIDIAN, OREGON. DEPENDENT RESURVEY



Mean magnetic declination
20° 55' East

Timber in this area consists of Douglas fir, western hemlock, red cedar, Oregon maple and alder.

10 50 10 20 30 40 50 60 70 80

Chains

Area resurveyed: 11,032.44 Acres

This plat represents a retracement and reestablishment of a portion of the south boundary, the east boundary, and a portion of the subdivisional lines designed to restore the corners in their true original location according to the best available evidence; and, excepting as new or modified vacant subdivisions are shown hereon, the lottings and areas are as shown on the plat approved August 4, 1884.

The north and west boundaries and subdivisional lines surveyed by William P. Wright in 1883.

The south boundary surveyed by W. H. Byars in 1874 and 1881.

The east boundary surveyed by Laban H. Wheeler in 1883.

The north, south and west boundaries and subdivisional lines resurveyed by Price and Rigby in 1945.

The north boundary resurveyed by Thomas A. Tillman in 1950.

The west boundary resurveyed by Alonzo Gesner in 1893.

Dependent resurvey of a portion of the south boundary, the east boundary, and a portion of the subdivisional lines of Township 21 South, Range 8 West, Willamette Meridian, Oregon, executed by Marvin J. Lytle, Palmer Norseth, Thomas A. Tillman, Raymond M. Bicknell, Joseph S. Gawron and Hans W. Thielsen, August 22, 1952 to October 6, 1954, under Special Instructions dated July 31, 1952, which provide for the surveys included under Group No. 304, Oregon.

Latitude 43° 41.6' N.
Longitude 123° 35.0' W.

UNITED STATES DEPARTMENT OF THE INTERIOR
BUREAU OF LAND MANAGEMENT
Washington, D.C. April 14, 1960

This plat is strictly conformable to the approved field notes, and the survey, having been correctly executed in accordance with the requirements of law and the regulations of this Bureau, is hereby accepted.

For the Director

Cadastral Engineering Staff Officer

104