

FILED
 Date: 1/29/2013 By: JC
 This survey consists of:
 Map: VOL. 58 PAGE
 Narrative: 22943-22944
 Corner Rpt: THIS PLAT REPRESENTS THE ENTIRE RECORD OF THE DEPENDENT RESURVEY
 DOUGLAS COUNTY SURVEYOR

TOWNSHIP 21 SOUTH, RANGE 7 WEST, OF THE WILLAMETTE MERIDIAN, OREGON

SHEET 1 OF 2

DEPENDENT RESURVEY AND SUBDIVISION OF SECTION 16

Sec. 8

Sec. 9

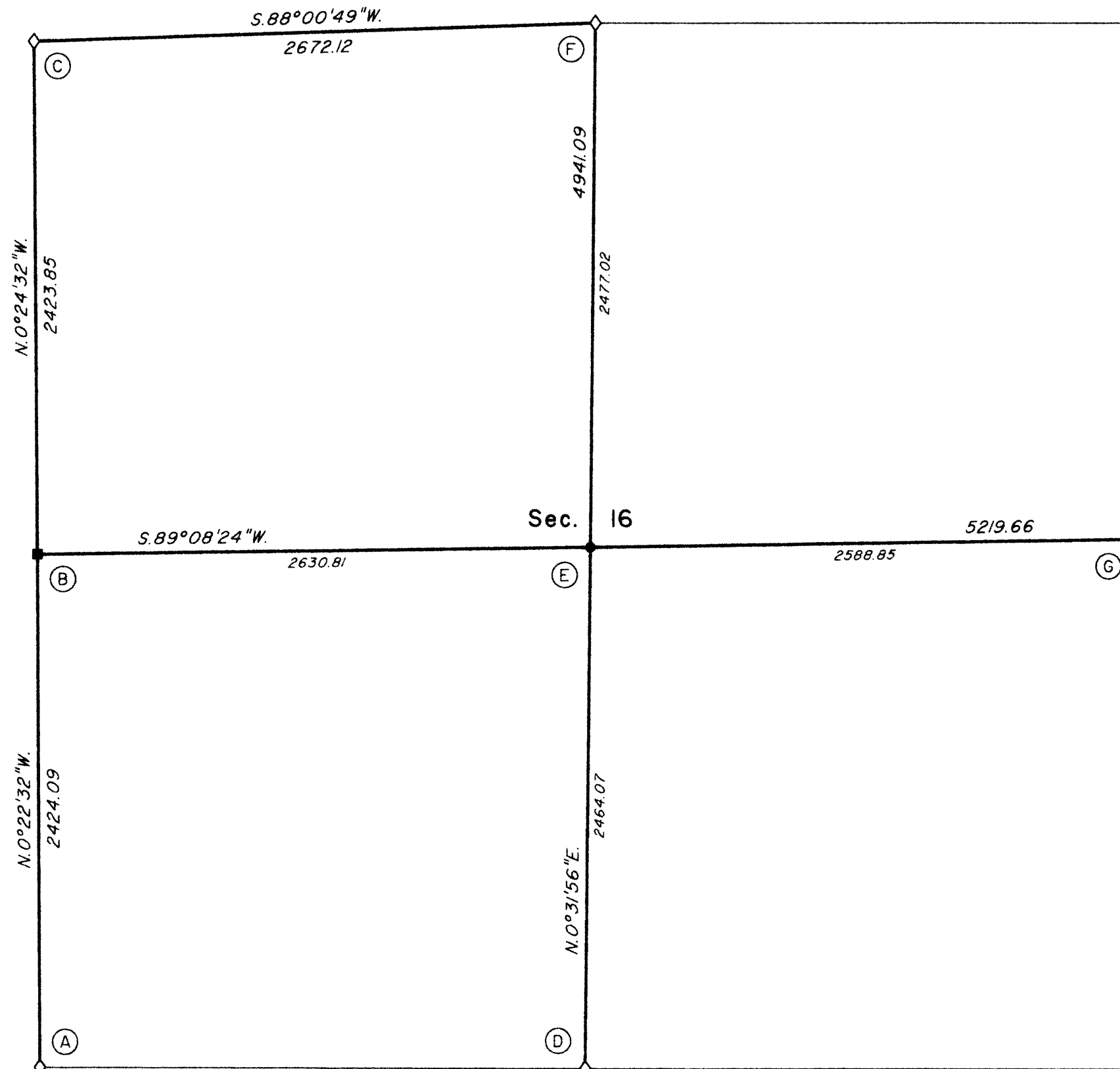
Sec. 17

Sec. 16

Sec. 15

Sec. 20

Sec. 21



This plat constitutes the entire record of the dependent resurvey of a portion of the subdivisional lines, designed to restore the corners in their true original locations according to the best available evidence, and the subdivision of section 16, Township 21 South, Range 7 West, Willamette Meridian, Oregon.

The history of official surveys pertaining to this survey is on Sheet 2 of 2.

The directions of the lines are based on the true meridian as determined by Global Positioning System (GPS) techniques and direct solar observation, carried forward by sustained angulation using conventional survey techniques. All measurements along the lines were derived through the use of GPS and conventional survey techniques. Measured distances and directions have been adjusted by computer software that incorporates a least squares adjustment routine. The adjusted mean bearings and mean horizontal ground elevation distances are reported to the nearest second and 0.01 foot.

The lottings and areas are as shown on the plat approved February 25, 1885.

Preliminary to the resurvey, the lines of the official original surveys were retraced and a search was made for all corners, lines, other calls of record, and, where available, collateral evidence of local surveys and corners. Identified corners were remonumented in their original positions; lost corners were reestablished and monumented at proportionate positions based on the official record.

The retracement data was thoroughly verified and only the true line field data are given hereon.

Each new bearing tree has a 2 1/2 inch x 1/4 inch magnetic nail (Mag Nail) driven at the base on right side center, unless otherwise noted in the corner description.

Only those lines bounding Federal interest land were blazed.

The geographic positions shown hereon were determined by ties from temporary GPS control points, utilizing dual frequency, carrier phase GPS receivers, and processed using the National Geodetic Survey's Online Positioning User Service (OPUS).

The survey was executed in accordance with the specification set forth in the Manual of Surveying Instructions (2009), and the special instructions approved August 24, 2011, for Group No. 2619, Oregon, by Kenneth W. Saveland, Cadastral Surveyor, beginning March 21, 2012, and completed May 1, 2012. He was assisted by Robert NMI Durning, Thomas A. Hollamon, and Marc A. Montpas, Surveying Technicians.

UNITED STATES DEPARTMENT OF THE INTERIOR
 BUREAU OF LAND MANAGEMENT

Portland, Oregon

The survey represented by this plat, having been correctly executed in accordance with the requirements of law and the regulations of this Bureau, is hereby accepted.

For the Director

Chief Cadastral Surveyor of Oregon

October 25, 2012

Date

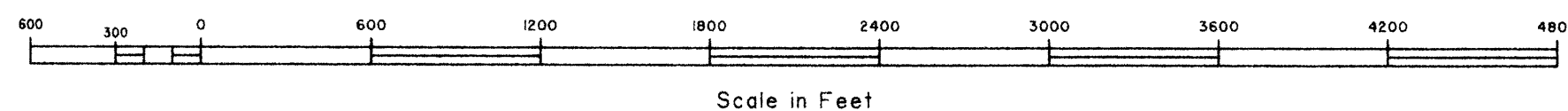
I, Kenneth W. Saveland, Cadastral Surveyor, HEREBY CERTIFY upon honor, that in pursuance of special instructions bearing the approval date of the 24th day of August, 2011, and the assignment instructions bearing the date of the 24th day of August, 2011, I have dependently resurveyed a portion of the subdivisional lines and subdivided section 16, Township 21 South, Range 7 West, Willamette Meridian, Oregon, which is represented upon this plat as having been executed by me and under my direction; and that said survey has been made in strict conformity with said special instructions, the Manual of Surveying Instructions, and in the specific manner described on this plat.

Cadastral Surveyor

October 15, 2012
 Date

LEGEND

- ◊ Original corner previously remonumented
- Corner previously reestablished; remonumented this survey
- Corner established this survey



OFFICIALLY FILED: 1/19/2013

TOWNSHIP 21 SOUTH, RANGE 7 WEST, OF THE WILLAMETTE MERIDIAN, OREGON

DEPENDENT RESURVEY AND SUBDIVISION OF SECTION 16

(A) The cor. of secs. 16, 17, 20, and 21, monumented with an iron post, 2 1/2 ins. diam., firmly set, projecting 7 ins. above ground, with brass cap mkd.

T 21 S R 7 W
S 17 | S 16
S 20 | S 21
1964

from which the remains of the original bearing trees

A cedar, 46 ins. diam., bears N. 61° E., 44.9 ft. dist., with fragmentary scribe marks visible on a partially healed blaze.

A decayed fir stump, 20 ins. diam., bears S. 60° E., 50.6 ft. dist., with no marks visible.

A fir, 62 ins. diam., bears S. 22° W., 42.9 ft. dist., with a healed blaze.

A fir, 58 ins. diam., bears N. 47° W., 62.7 ft. dist., with a healed blaze.

and the bearing trees mkd. by Brooks and Jelley

A fir, 17 ins. diam., bears N. 79 1/4° E., 13.5 ft. dist., with a healed blaze.

A fir, 25 ins. diam., bears S. 47 1/4° E., 28.4 ft. dist., with a healed blaze.

A fir, 35 ins. diam., bears S. 86 1/2° W., 46.7 ft. dist., with a healed blaze.

A fir, 29 ins. diam., bears N. 53° W., 19.1 ft. dist., with a healed blaze.

(B) The 1/4 sec. cor. of secs. 16 and 17, reestablished by proportionate measurement by Haines, PLS 239, in 1970. There is no remaining evidence of the original cor. and this position is accepted as a careful and faithful reestablishment of the cor.; monumented with a rebar, 5/8 in. diam., firmly set, projecting 6 ins. above ground, from which the bearing trees mkd. by Haines

A fir, 15 ins. diam., bears S. 29° E., 11.9 ft. dist., with a healed blaze.

A fir, 49 ins. diam., bears N. 25 1/4° W., 24.6 ft. dist., with a healed blaze.

At the corner point

Set a stainless steel post, 28 ins. long, 2 1/2 ins. diam., 26 ins. in the ground, with brass cap mkd.

T 21 S R 7 W
1/4
S 17 | S 16
2012

Place rebar, 36 ins. long, inside and deposit a magnet in a white plastic case at the base of the stainless steel post.

Corner is located 45 ft. E. of an overgrown gravel road, 15 ft. wide, bears N. and S.

(C) The cor. of secs. 8, 9, 16, and 17, perpetuated by Byron, Deputy County Surveyor, in 1958, monumented with an iron post, 1 1/4 ins. diam., firmly set, projecting 8 ins. above ground, with a brass cap mkd.

COUNTY SURVEYORS
T 21 S R 7 W
S 8 | S 9
S 17 | S 16
OFFICE 1958

from which the remains of the original bearing trees

A roothole bears N. 30° E., 51.5 ft. dist., downhill of which is a fallen fir snag, size indeterminate, with no marks visible.

A decayed fir snag, size indeterminate, bears S. 35° E., 5.3 ft. dist., with no marks visible.

and bearing trees mkd. by Byron

A fir, 33 ins. diam., bears N. 58 1/4° E., 41.5 ft. dist., with no marks visible.

A hemlock, 24 ins. diam., bears S. 79 1/4° E., 4.9 ft. dist., with a healed blaze.

A maple, 29 ins. diam., bears N. 39 1/4° W., 31.0 ft. dist., with no marks visible.

and a new bearing tree

An alder, 5 ins. diam., bears S. 6 1/4° W., 43.3 ft. dist., mkd. X BT in bark.

Add a collar of stone around the iron post.

Corner is located 45 ft. N. of a creek, 3 ft. wide, course N. 60° E., and 145 ft. W. of the same creek, 2 ft. wide, course East.

(D) The 1/4 sec. cor. of secs. 16 and 21, perpetuated by Byron, Deputy County Surveyor, in 1959, monumented with an iron post, 1 1/4 ins. diam., firmly set, projecting 13 ins. above ground, with a brass cap mkd.

COUNTY SURVEYORS OFFICE
T 21 S
S 16
1/4
S 21
R 7 W
1959

from which the remaining original bearing tree

A fir, 65 ins. diam., bears N. 65° E., 8.6 ft. dist., with axe marks visible.

and a bearing tree mkd. by Byron

A hemlock, 20 ins. diam., bears S. 3° E., 34.2 ft. dist., with a healed double blaze.

(E) Point for the center 1/4 sec. cor of sec. 16 at intersection of the N. and S. centerline with the E. and W. centerline.

Set a stainless steel post, 28 ins. long, 2 1/2 ins. diam., 26 ins. in the ground, with brass cap mkd.

T 21 S R 7 W
C 1/4 S 16
2012

from which

A fir, 32 ins. diam., bears N. 30 3/4° E., 9.3 ft. dist., mkd. C1/4 S16 BT.

A hemlock, 11 ins. diam., bears S. 81 1/2° E., 36.5 ft. dist., mkd. C1/4 S16 BT.

Deposit a magnet in a white plastic case at the base of the stainless steel post.

From this cor., a point established by person(s) unknown bears S. 16° 19' 52" W., 1.84 ft. dist., monumented with an iron rod, 1 in. diam., firmly set, projecting 12 ins. above ground, and was not utilized during the course of this survey.

Drive the iron rod flush with ground surface.

(F) The 1/4 sec. cor. of secs. 9 and 16, perpetuated by Byron, Deputy County Surveyor, in 1959, subsequently perpetuated by Haines, PLS 239, in 1961, monumented with an iron post, 1 1/4 ins. diam., firmly set, projecting 12 ins. above ground, with brass cap mkd.

LS 239
T 21 S
S 9
1/4
S 16
R3W
1961

from which the remains of the original bearing trees

A sawed fir stump, 60 ins. diam., bears S. 44° E., 50.8 ft. dist., with a healed blaze.

A sawed, decayed fir stump, 40 ins. diam., bears N. 45° W., 19.8 ft. dist., with no marks visible.

and the remains of a bearing tree mkd. by Byron

A sawed, decayed hemlock stump, 32 ins. diam., bears S. 15 3/4° W., 85.8 ft. dist., with no marks visible.

and new bearing trees

A fir, 18 ins. diam., bears S. 2° W., 12.7 ft. dist., mkd. 1/4 S16 BT.

A fir, 15 ins. diam., bears N. 79° W., 7.1 ft. dist., mkd. 1/4 S9 BT.

Raised a mound of stone, 3 ft. base, 1 1/2 ft. high, around iron post.

Corner is located 45 ft. S. of Johnson Creek, 3 ft. wide, course N. 65° W., and 25 ft. W. of same creek, 1 ft. wide, course S. 50° W.

(G) The 1/4 sec. cor. of secs. 15 and 16, perpetuated by Byron, Deputy County Surveyor, in 1959, subsequently perpetuated by Godfrey, Deputy County Surveyor, in 1963, monumented with an iron post, 1 1/4 ins. diam., firmly set, projecting 5 ins. above ground, with a brass cap mkd.

COUNTY SURVEYORS OFFICE
T 21 S
1/4 S | S
15 | 16
R 7 W
1963

from which the remains of an original bearing tree

A sawed, decayed fir stump, 42 ins. diam., bears N. 68° E., 12.5 ft. dist., with axe marks visible and a metal cover.

and the remains of a bearing tree mkd. by Godfrey

A decayed hemlock stump, size indeterminate, bears S. 30 1/4° W., 36.1 ft. dist., with no marks visible.

and new bearing trees

A fir, 13 ins. diam., bears S. 53 1/4° E., 19.3 ft. dist., mkd. 1/4 S15 BT.

A fir, 14 ins. diam., bears S. 41 1/4° W., 24.8 ft. dist., mkd. 1/4 S16 BT.

Add a collar of stone around the iron post.

The iron post set by Byron, 36 ins. long, 1 1/4 ins. diam., disturbed, buried under a large rock, with a brass cap mkd. COUNTY SURVEYORS OFFICE T21S 1/4 S16 S15 R7W 1959, approximately 3 ft. easterly and downhill of the cor., is exhumed and buried alongside the cor.

The history of official surveys pertaining to this survey is as follows:

In 1883, Laban H. Wheeler, U.S. Deputy Surveyor, surveyed a portion of the subdivisional lines, as shown on the official plat of survey approved May 19, 1884.

In 1884, William P. Wright, U.S. Deputy Surveyor, surveyed the remainder of the subdivisional lines, as shown on the official plat of survey approved February 25, 1885.

In 1964, Floyd A. Brooks and James E. Jelley, Cadastral Surveyors, resurveyed a portion of the subdivisional lines, as shown on the official plat of survey accepted August 20, 1965.

In 1967, Donald R. Beck, Cadastral Surveyor, resurveyed a portion of the subdivisional lines, as shown on the official plat of survey accepted February 20, 1970.

In 2005-06, Edith M. Forkner, Cadastral Surveyor, correctively resurveyed a portion of the subdivisional lines, resurveyed a portion of the subdivisional lines, and subdivided sections 20 and 30, as shown on the official plat of survey accepted March 16, 2009.

The following local surveys filed in the Douglas County Surveyor's Office are referred to in subsequent corner description and are referenced by surveyor's last name, official title or Professional Land Surveyor (PLS) No., and year.

Table with 3 columns: Date, Name and Registration Number, File Number. Rows include James Byron, Milo Godfrey, Wilford N. Haines, PLS 239.

FILED

Date: 1/29/2013 By: JC

This survey consists of:

Map: VOL. 58 PAGE

Narrative: 22943-22944

Corner Rpt: THIS PLAT REPRESENTS THE ENTIRE RECORD OF THE DEPENDENT RESURVEY

DOUGLAS COUNTY SURVEYOR

UNITED STATES DEPARTMENT OF THE INTERIOR BUREAU OF LAND MANAGEMENT

Portland, Oregon

The survey represented by this plat, having been correctly executed in accordance with the requirements of law and the regulations of this Bureau, is hereby accepted.

For the Director

Handwritten signature of Mary J. M. Hartzel

Chief Cadastral Surveyor of Oregon

October 25, 2012

Date

OFFICIALLY FILED: 1/9/2013