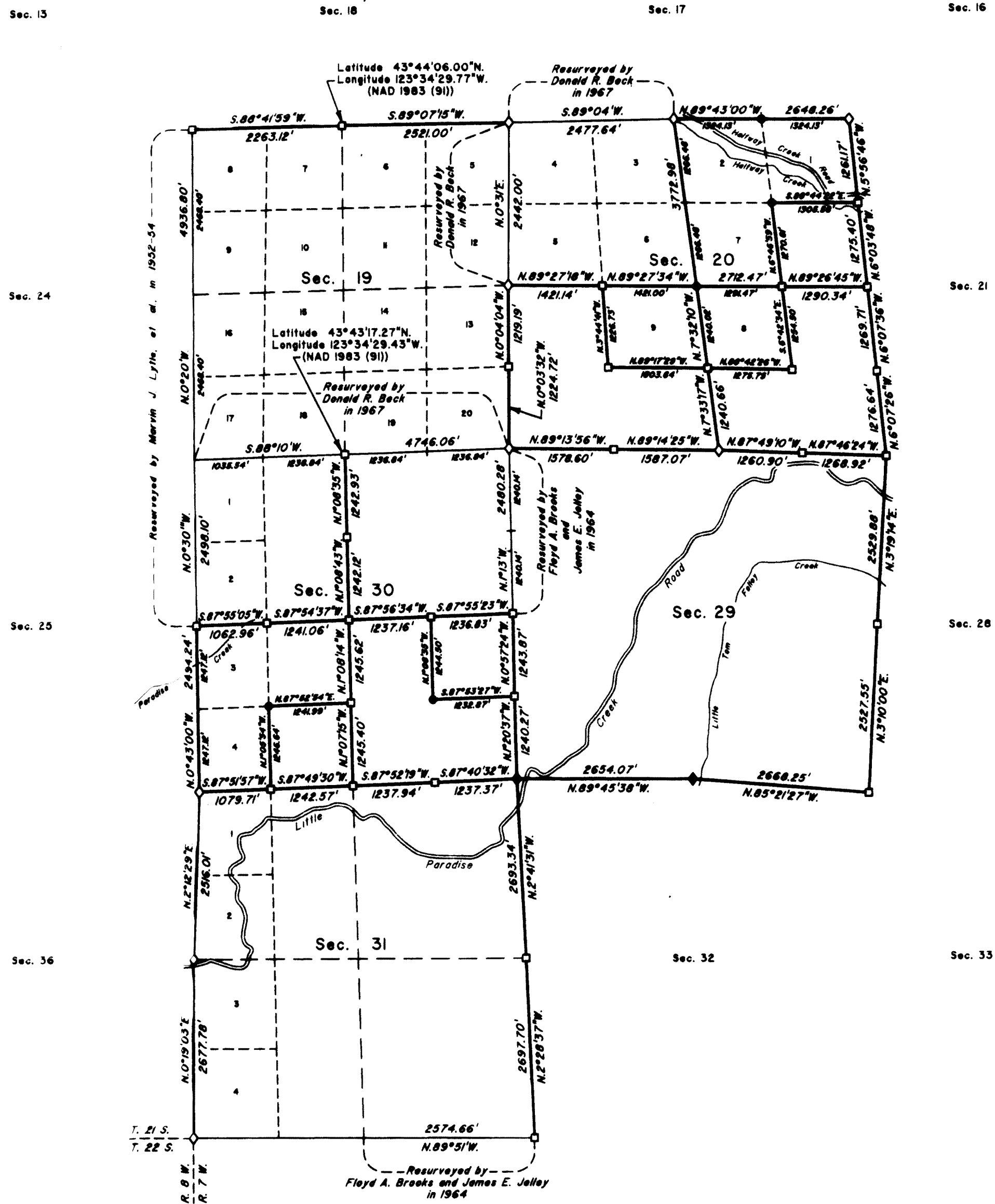


TOWNSHIP 21 SOUTH, RANGE 7 WEST, OF THE WILLAMETTE MERIDIAN, OREGON

CORRECTIVE DEPENDENT RESURVEY, DEPENDENT RESURVEY, AND SUBDIVISION OF SECTIONS



LEGAL SUBDIVISION	OFFICIAL ACRES
SECTION 20	
LOT 1	37.85
LOT 2	37.89
LOT 7	37.51
LOT 8	36.39
LOT 9	41.13
SECTION 30	
LOT 3	30.54
LOT 4	30.78
NE 1/4 SW 1/4	30.51
NE 1/4 SE 1/4	35.26



A history of surveys is contained in the field notes.

This plat represents a corrective dependent resurvey of a portion of the subdivisional lines, the dependent resurvey of a portion of the west boundary and subdivisional lines, T. 21 S., R. 7 W., Willamette Meridian, Oregon, designed to restore the corners in their true original locations according to the best available evidence, and the subdivision of sections 20 and 30.

Measured distances and directions have been adjusted by computer software that incorporates a least squares adjustment routine. The adjusted bearings and distances are reported to the nearest second and 0.01 foot.

Actual quantity acreages have been returned for the federal interest lands where indicated. The aliquot part and lot will retain its designation even though the official acreage has changed. The aliquot part of a section will continue to be subdivided by legal subdivision in accordance with the Manual. When an area has been assigned a lot number, it may be further subdivided only by a supplemental plat or another official survey. The official lottings and areas not affected by this survey are as shown on the plats approved February 25, 1885 and February 20, 1970.

The survey was executed by Edith M. Forkner, Cadastral Surveyor, beginning September 8, 2005, and completed October 26, 2006, pursuant to Special Instructions dated July 1, 2005 and Supplemental Special Instructions dated December 5, 2005, under Group Number 2114, Oregon.

LEGEND	
◊	Original corner previously remonumented
◆	Original corner remonumented this survey
□	Corner previously established or reestablished
●	Corner established or reestablished this survey

UNITED STATES DEPARTMENT OF THE INTERIOR
BUREAU OF LAND MANAGEMENT
Portland, Oregon

This plat is strictly conformable to the approved field notes, and the survey, having been correctly executed in accordance with the requirements of law and the regulations of this Bureau, is hereby accepted.

For the Director
Mary J. M. Hartzel
Chief Cadastral Surveyor of Oregon

March 16, 2009
Date