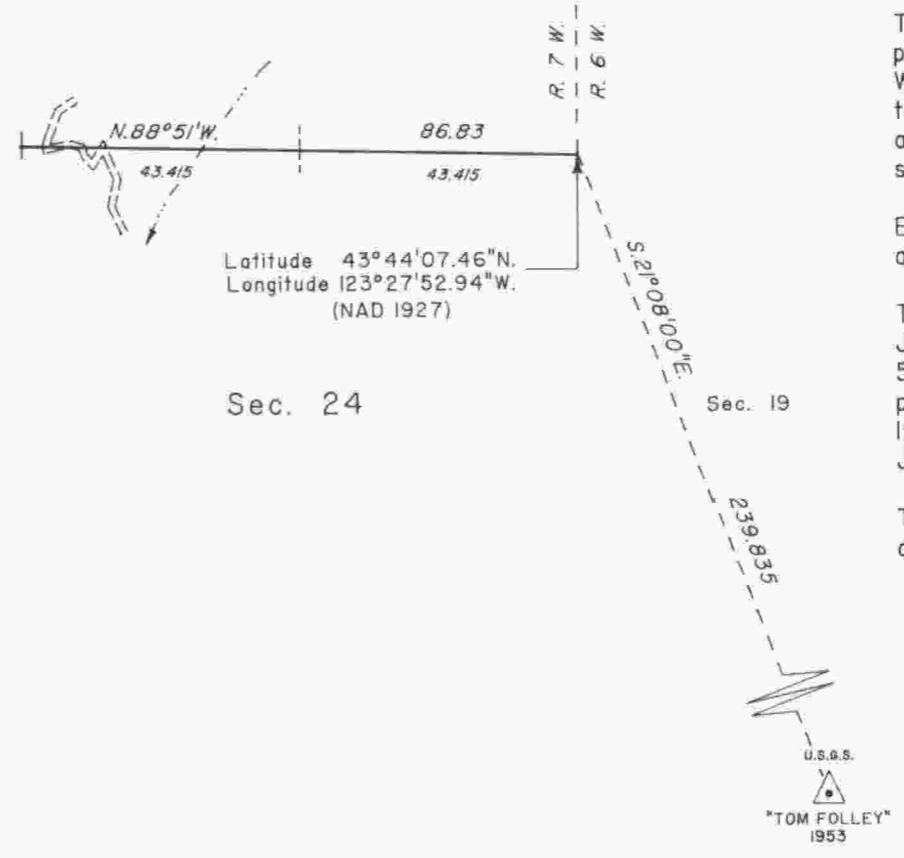
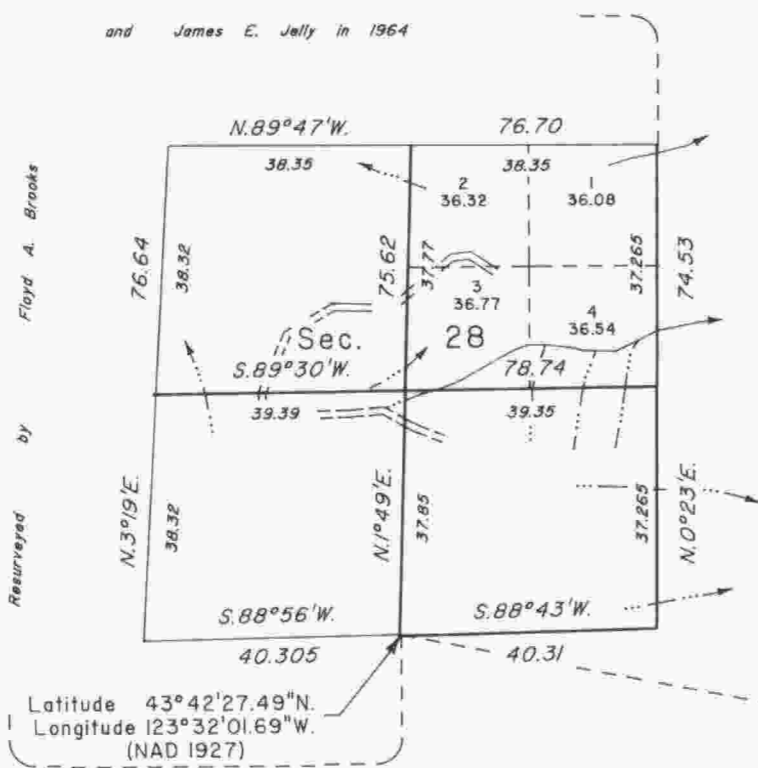
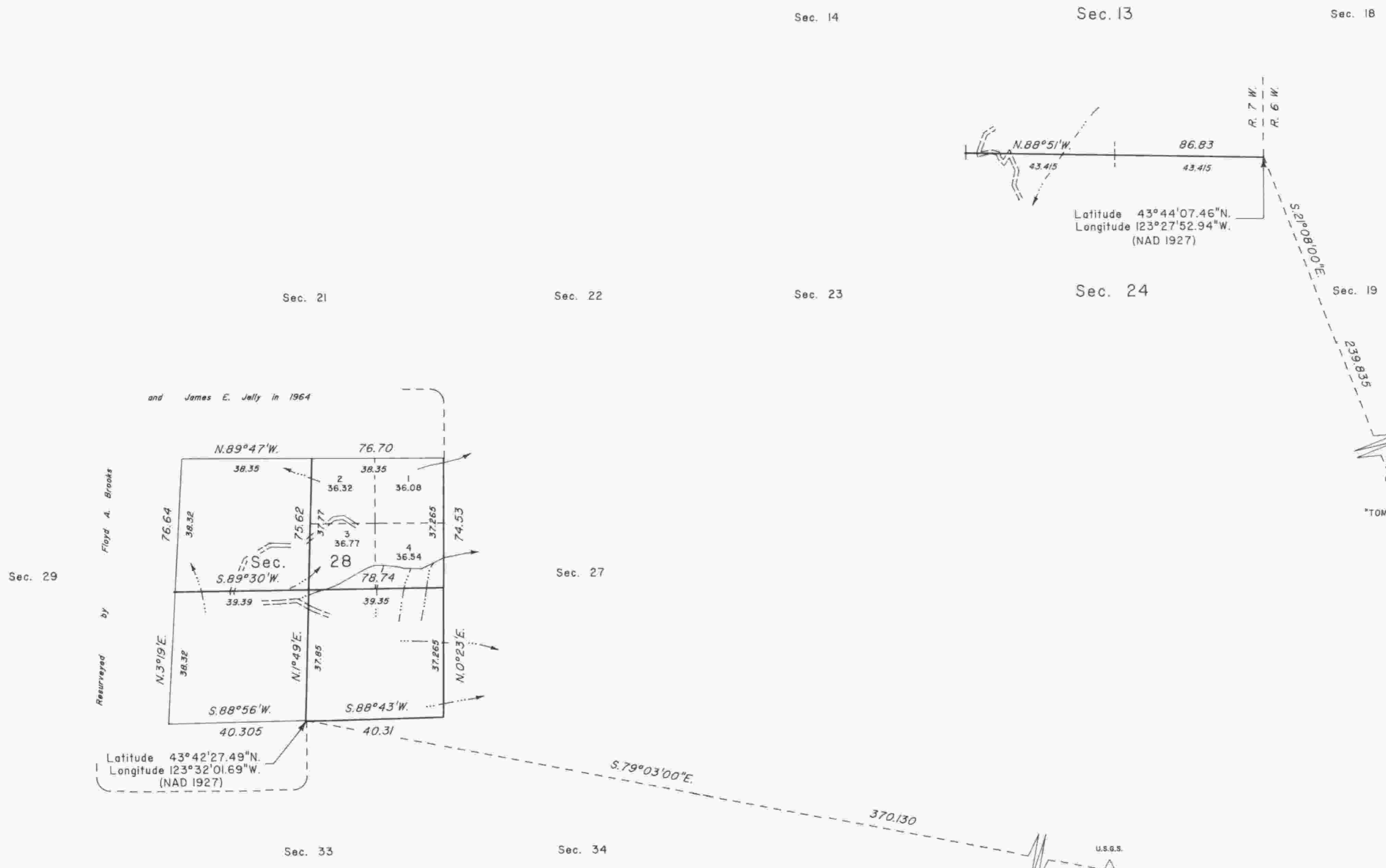
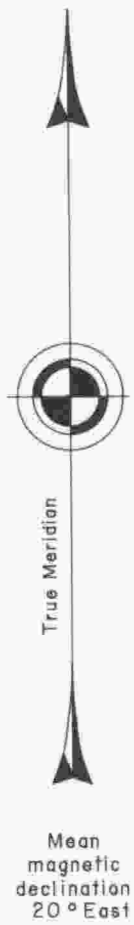


TOWNSHIP 21 SOUTH, RANGE 7 WEST, OF THE WILLAMETTE MERIDIAN, OREGON

DEPENDENT RESURVEY AND SUBDIVISION OF SECTION 28



A history of surveys is contained in the field notes.

This plat represents a dependent resurvey of a portion of the subdivisional lines, T.21S., R.7W., Willamette Meridian, Oregon, designed to restore the corners in their true original locations according to the best available evidence, and the subdivision of section 28.

Except as shown hereon, the lottings and areas are as shown on the plat approved May 19, 1884.

The survey was executed by Wayne L. Rogers and Joel E. Robb, Cadastral Surveyors, beginning May 5, 1986, and completed November 25, 1986, pursuant to Special Instructions dated March 21, 1986 and Supplemental Special Instructions dated July 10, 1986, under Group Number 131B, Oregon.

Timber in this area consists of fir, cedar, maple and alder.

UNITED STATES DEPARTMENT OF THE INTERIOR
BUREAU OF LAND MANAGEMENT

Portland, Oregon February 24, 1989

This plat is strictly conformable to the approved field notes, and the survey, having been correctly executed in accordance with the requirements of law and the regulations of this Bureau, is hereby accepted.

For the Director

Wayne M. Gardner

Chief Cadastral Surveyor of Oregon

