

TOWNSHIP 21 SOUTH, RANGE 7 WEST, OF THE WILLAMETTE MERIDIAN, OREGON.

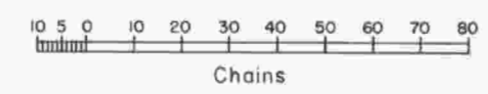
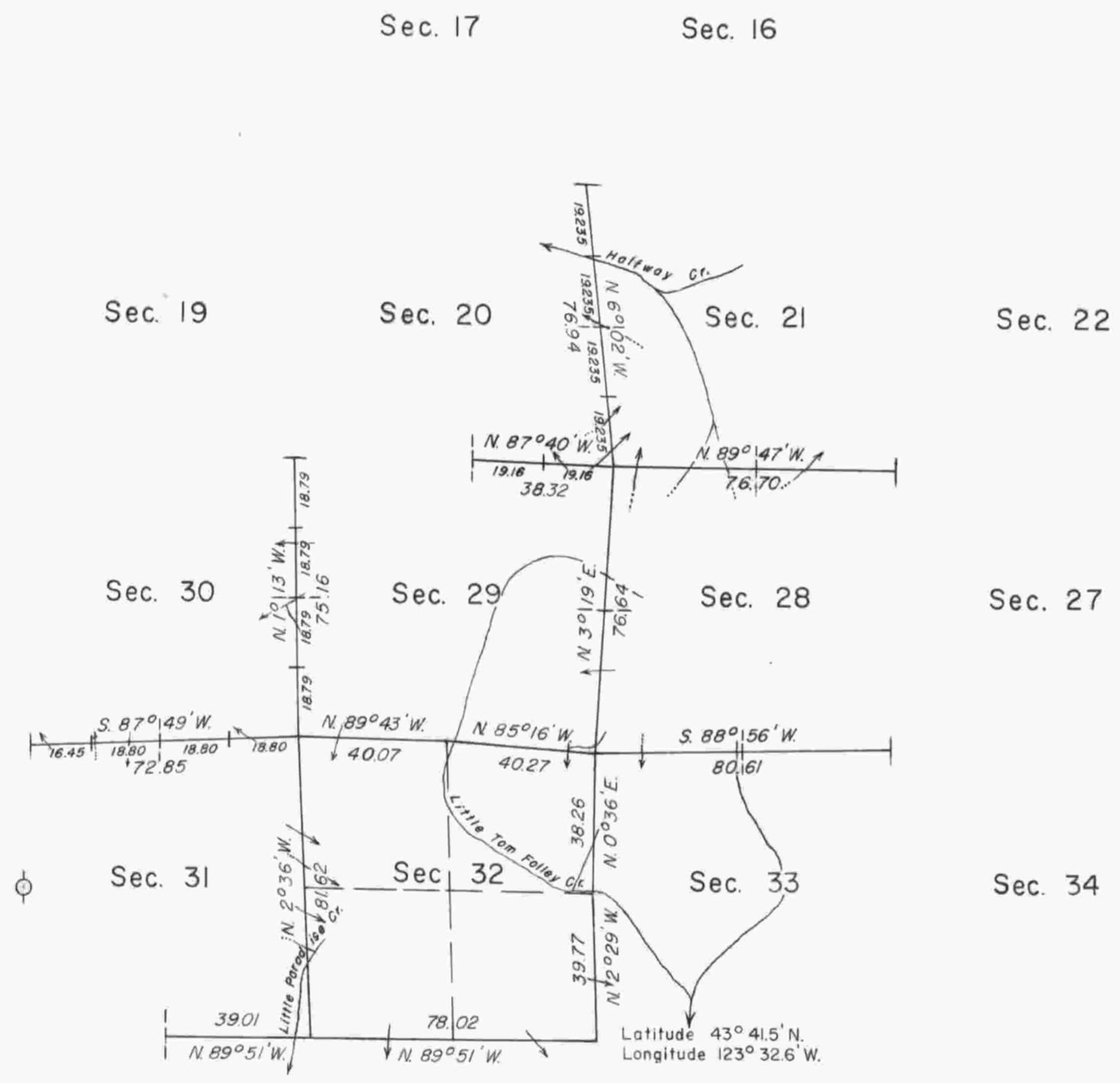
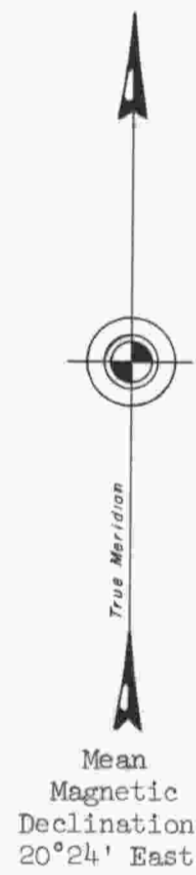
DEPENDENT RESURVEY AND REMONUMENTATION

This plat represents a retracement and reestablishment of a portion of the south boundary, a portion of the subdivisional lines and remonumentation of an original corner point, designed to restore the corners in their true original locations according to the best available evidence.

The south boundary of the township was surveyed by Harvey Gordon and Charles T. Gardner in 1855. The west boundary was surveyed by Laban H. Wheeler in 1883. At the same time he retraced the south boundary of section 34 and surveyed the subdivisional lines of the east half of the township. The survey of the township was completed by William P. Wright in 1884, at which time he retraced the south boundary of section 32. The south two miles of the west boundary were resurveyed by Marvin J. Lytle in 1952. The north 4 miles of the west boundary were resurveyed by Thomas A. Tillman in 1954. The lottings and areas are as shown on the plat approved February 25, 1885.

These surveys executed by Floyd A. Brooks and James E. Jelley, May 15 to June 30, 1964, under Special Instructions dated January 6, 1964, and May 3, 1957, which provide for the surveys included under Group Nos. 536 and 350, Oregon.

⊕ Corner remonumented in 1964, under Group No. 350.



Timber in this area consists of fir, hemlock, cedar, maple, alder, and chinquapin.

Area resurveyed: 640 Acres

UNITED STATES DEPARTMENT OF THE INTERIOR
BUREAU OF LAND MANAGEMENT
Washington, D. C. August 20, 1965

This plat is strictly conformable to the approved field notes, and the survey, having been correctly executed in accordance with the requirements of law and the regulations of this Bureau, is hereby accepted.

For the Director

Clark I. Lumm

Acting Chief, Division of Engineering