

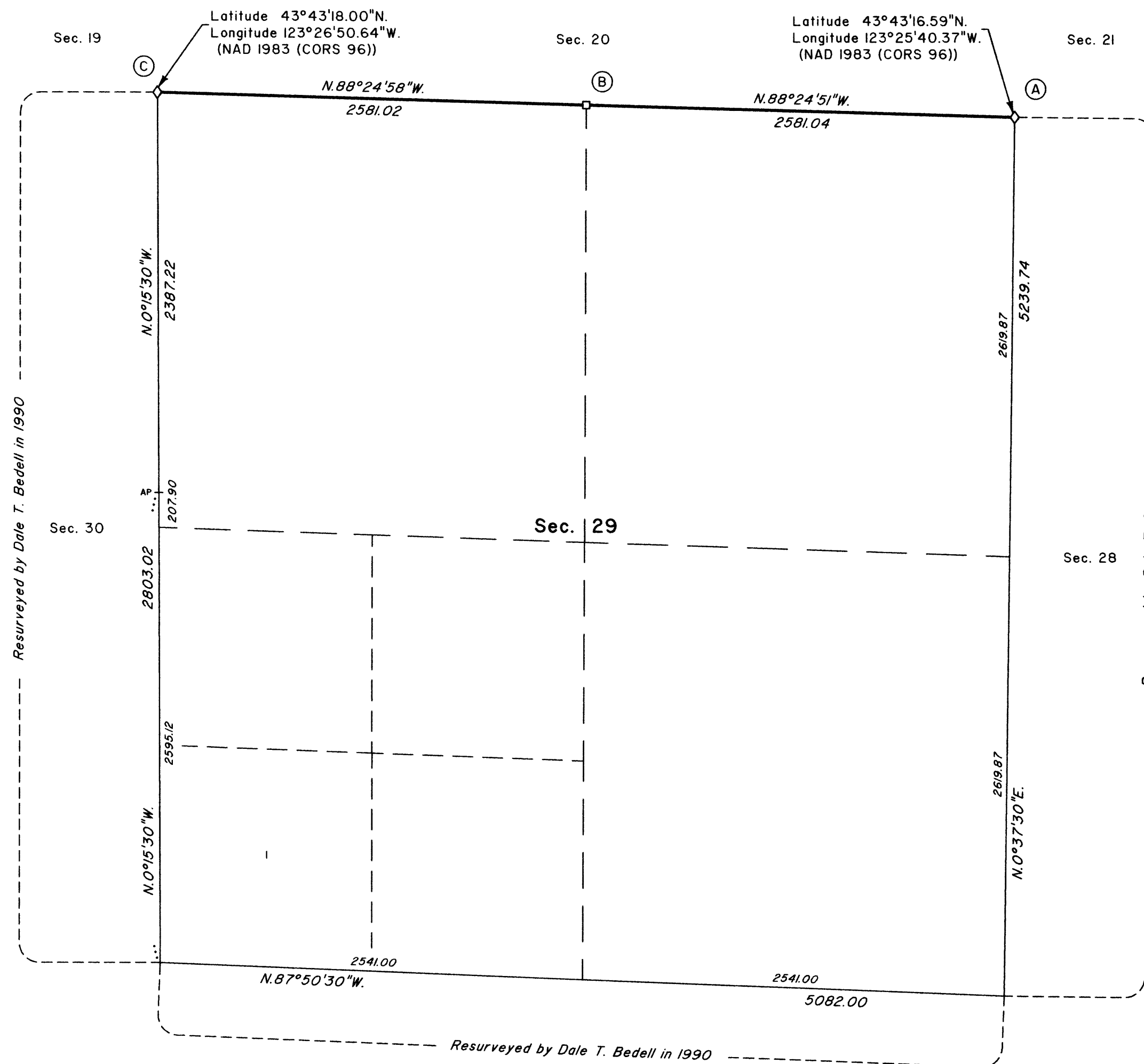
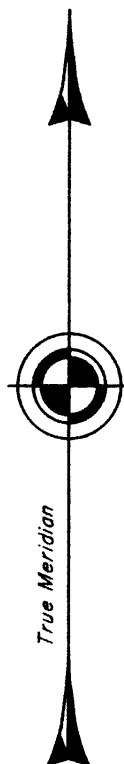
Date: 3/20/2013 By: JC
 This survey consists of:
 Map: PLAT 2013-1 T21-6
 Narrative: VOL. 58 PG 22973-4
 Corner Rpt. THIS PLAT REPRESENTS THE ENTIRE RECORD OF THE DEPENDENT RESURVEY

TOWNSHIP 21 SOUTH, RANGE 6 WEST, OF THE WILLAMETTE MERIDIAN, OREGON

DOUGLAS COUNTY
 SURVEYOR

RETRACEMENT

LEGAL SUBDIVISION	OFFICIAL ACRES
SECTION 29	
NE 1/4 NE 1/4	38.68
NW 1/4 NE 1/4	38.58
SW 1/4 NE 1/4	38.43
SE 1/4 NE 1/4	38.53
NE 1/4 NW 1/4	38.49
NW 1/4 NW 1/4	38.40
SW 1/4 NW 1/4	38.25
SE 1/4 NW 1/4	38.35
NE 1/4 SW 1/4	38.22
NW 1/4 SW 1/4	38.10
LOT 1	37.94
SE 1/4 SW 1/4	38.09
NE 1/4 SE 1/4	38.37
NW 1/4 SE 1/4	38.28
SW 1/4 SE 1/4	38.13
SE 1/4 SE 1/4	38.22
TOTAL AREA	613.06
FEDERAL INTEREST LAND RESURVEYED	



This plat constitutes the entire record of the retracement of a portion of the subdivisional lines, Township 21 South, Range 6 West, Willamette Meridian, Oregon.

The history of official surveys pertaining to this retracement is as follows:

In 1884, William P. Wright, U.S. Deputy Surveyor, surveyed a portion of the subdivisional lines as shown on the official plat of survey approved February 25, 1885.

In 1990, Dale T. Bedell, Cadastral Surveyor, resurveyed a portion of the subdivisional lines as shown on the official plat of survey accepted June 1, 1993.

The following local surveys filed in the Douglas County Surveyor's Office are referred to in subsequent corner descriptions and are referenced by surveyor's last name, official title or Professional Land Surveyor (PLS) No., and year.

Date	Name and Registration Number	File Number
1958	James Byron, Deputy Co Surveyor	CS49/89
1961	Milo Godfrey, Deputy Co Surveyor	CS49/143

The directions of the lines are based on the true meridian as determined by Global Positioning Systems (GPS) techniques and carried forward by sustained angulation using conventional survey techniques. All measurements along the lines were derived through the use of GPS and conventional survey techniques. Measured distances and directions have been adjusted by computer software that incorporates a least squares adjustment routine. The adjusted mean bearings and mean horizontal ground elevation distances are reported to the nearest second and 0.01 foot.

The lines of the prior survey and resurvey were retraced and search was made for all corners, lines, other calls of record, and where available, collateral evidence of local surveys and corners. Identified corners were perpetuated in their original positions. The retracement data were thoroughly verified and only the true line field data are given hereon.

Each new bearing tree has a 2 1/2 x 1/4 inch magnetic nail (Mag Nail) driven at the base on right side center, unless otherwise noted in the corner description.

Only those lines bounding Federal interest land were blazed.

The geographic positions shown hereon were determined by ties from temporary GPS control points utilizing dual frequency, carrier phase GPS receivers, and processed using the National Geodetic Survey's Online Positioning User Service (OPUS).

The survey was executed in accordance with the specification set forth in the Manual of Surveying Instructions (2009), and the special instructions approved April 28, 2010, for Group No. 2500, Administrative File No. 1205, Oregon, by A. Bert Skeesick, Cadastral Surveyor, beginning May 23, 2012, and completed May 30, 2012. He was assisted by Robert NMI Durning, Thomas A. Hollamon, and Marc A. Montpas, Surveying Technicians.

UNITED STATES DEPARTMENT OF THE INTERIOR
 BUREAU OF LAND MANAGEMENT

Portland, Oregon

The survey represented by this plat, having been correctly executed in accordance with the requirements of law and the regulations of this Bureau, is hereby accepted.

For the Director

Mary J. M. Hatch

Chief Cadastral Surveyor of Oregon

I, A. Bert Skeesick, Cadastral Surveyor, HEREBY CERTIFY upon honor, that in pursuance of special instructions bearing the approval date of the 28th day of April, 2010, and assignment instructions bearing the date of the 8th day of May, 2012, I have retraced a portion of the subdivisional lines, Township 21 South, Range 6 West, Willamette Meridian, Oregon, which is represented upon this plat as having been executed by me and under my direction; and that said survey has been made in strict conformity with said special instructions, the Manual of Surveying Instructions, and in the specific manner described on this plat.

A. Bert Skeesick

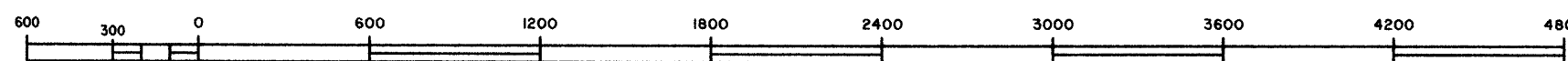
Cadastral Surveyor

January 8, 2013

Date

LEGEND

- ◊ Original corner previously remonumented
- Corner previously established or reestablished



Scale in Feet

January 10, 2013

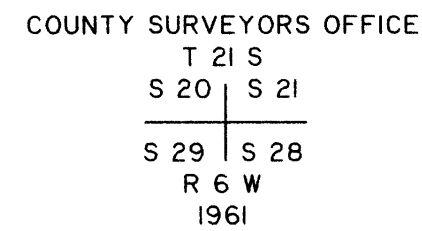
OFFICIALLY FILED: 1/25/2013

TOWNSHIP 21 SOUTH, RANGE 6 WEST, OF THE WILLAMETTE MERIDIAN, OREGON

SHEET 2 OF 2

RETRACEMENT

(A) The cor. of secs. 20, 21, 28, and 29, monumented with an iron post, 1 1/4 ins. diam., firmly set, projecting 9 ins. above ground, with brass cap mkd.



from which the remains of the original bearing trees

A broken, decayed fir stump, size indeterminate, bears N. 66° E., 29.7 ft. dist., with no marks visible.

A hollowed, decayed fir stump, 20 ins. diam., bears S. 36° E., 13.9 ft. dist., with no marks visible.

A decayed fir stump, 28 ins. diam., bears S. 47° W., 17.2 ft. dist., with no marks visible.

A decayed fir stump, 30 ins. diam., bears N. 80° W., 13.2 ft. dist., with no marks visible.

and the remains of bearing trees mkd. by Godfrey, Deputy County Surveyor, in 1961

A fir, 23 ins. diam., bears N. 1° E., 50.8 ft. dist., with a healed blaze. (Record, N. 1 3/4° W.)

A chinquapin, 19 ins. diam., bears N. 52° E., 48.2 ft. dist., with a healed blaze.

A decayed fir snag, 13 ins. diam., bears S. 68 1/2° E., 57.2 ft. dist., with no marks visible. (Record, S. 70 3/4° E., 54.1 ft.)

and the bearing trees mkd. by Bedell

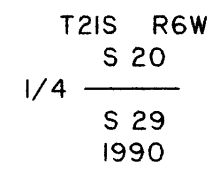
A fir, 29 ins. diam., bears S. 48 1/2° E., 40.9 ft. dist., with a healed blaze.

A fir, 14 ins. diam., bears S. 73 1/2° W., 26.4 ft. dist., with a healed blaze.

and a new bearing tree

A fir, 16 ins. diam., bears S. 30 3/4° W., 24.1 ft. dist., mkd. T21S R6W S29 BT.

(B) The 1/4 sec. cor. of secs. 20 and 29, monumented with a stainless steel post, 2 1/2 ins. diam., firmly set, projecting 3 ins. above ground, with brass cap mkd.

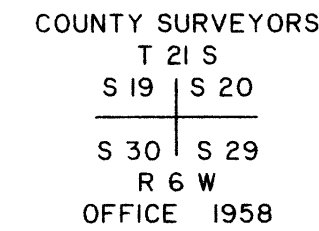


from which the bearing trees mkd. by Bedell

A fir, 13 ins. diam., bears S. 22° E., 7.3 ft. dist., with a healed blaze.

A fir, 13 ins. diam., bears N. 13 1/2° W., 9.9 ft. dist., with a healed blaze.

(C) The cor. of secs. 19, 20, 29, and 30, monumented with an iron post, 1 1/4 ins. diam., firmly set, projecting 20 ins. above ground, with brass cap mkd.



from which the remains of the original bearing trees

A decayed fir stump, size indeterminate, bears N. 38° E., 21.1 ft. dist., with no marks visible.

A roothole bears S. 60° E., 23.8 ft. dist., with a fallen, decayed fir snag, 36 ins. diam., lying alongside, with no marks visible. (Record, S. 69° E., 15.2 ft.)

A fir, 38 ins. diam., bears N. 40° W., 21.1 ft. dist., with a healed blaze

and the bearing trees mkd. by Byron, Deputy County Surveyor, in 1958

A maple, 17 ins. diam., bears N. 80° E., 23.1 ft. dist., with a healed blaze.

A cedar, 25 ins. diam., bears S. 15 3/4° E., 47.5 ft. dist., with a healed blaze. (Record, S. 19° E.)

A cedar, 17 ins. diam., bears S. 27° W., 31.7 ft. dist., with a healed blaze.

FILED
Date: 3/20/2013 By: JC
This survey consists of:
Map: PLAT 2013-1 T21-6
Narrative: VOL. 58 PGS 22973-4
Corner Rpt: THIS PLAT REPRESENTS THE ENTIRE RECORD OF THE DEPENDENT RESURVEY
DOUGLAS COUNTY SURVEYOR

OFFICIALLY FILED: 1/25/2013

UNITED STATES DEPARTMENT OF THE INTERIOR
BUREAU OF LAND MANAGEMENT

Portland, Oregon

The survey represented by this plat, having been correctly executed in accordance with the requirements of law and the regulations of this Bureau, is hereby accepted.

For the Director

Mary J. M. Hartzel

Chief Cadastral Surveyor of Oregon

January 10, 2013
Date