

# TOWNSHIP 21 SOUTH, RANGE 6 WEST, OF THE WILLAMETTE MERIDIAN, OREGON

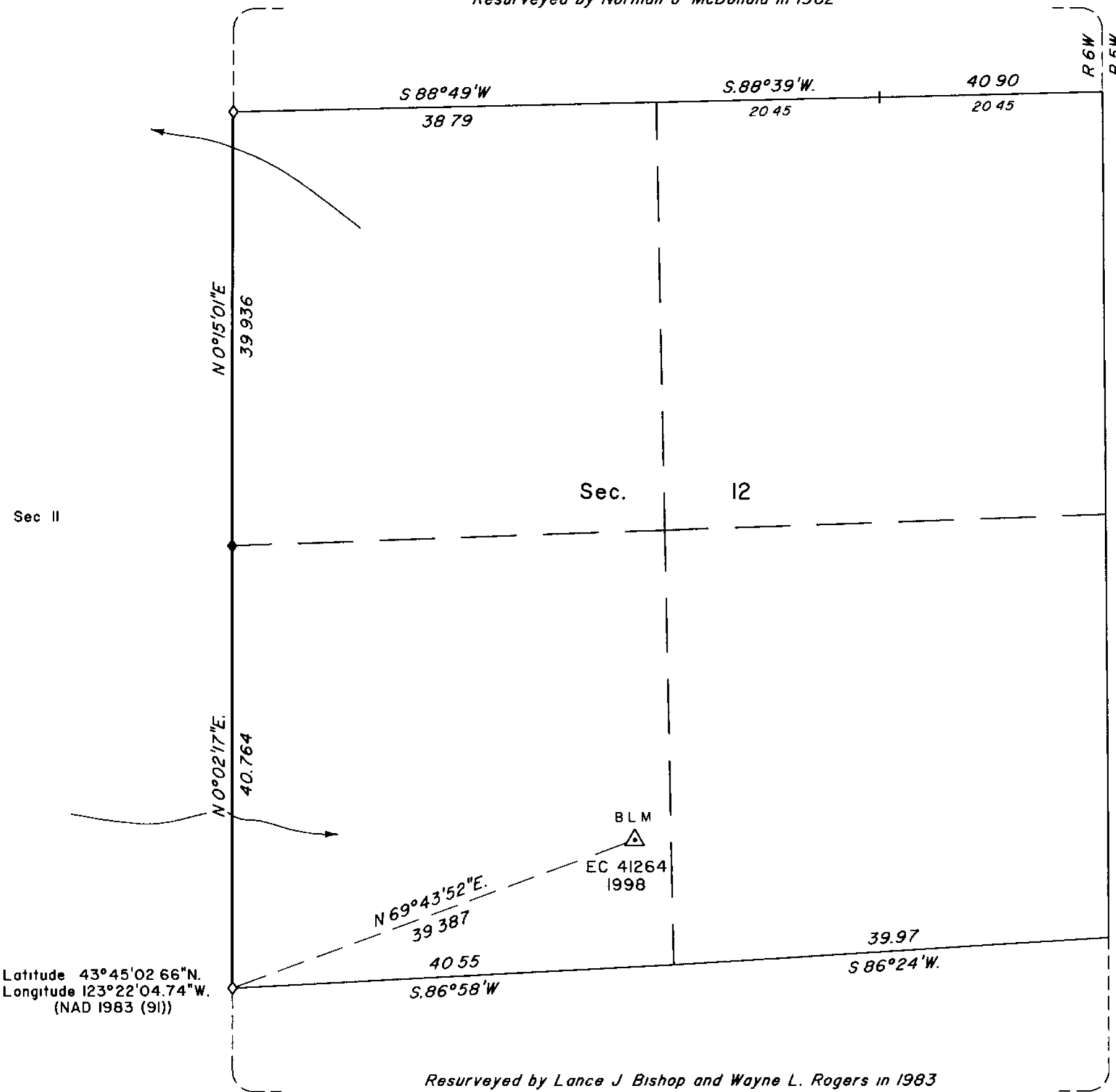
## DEPENDENT RESURVEY

FILED  
 Date: 2-2-2000 By: JC  
 This survey consists of:  
 Map:  
 Narrative: Vol. 53  
 Corner Rpt: Pgs. 20254-20260  
 DOUGLAS COUNTY

Sec 2

Sec 1

Resurveyed by Norman J. McDonald in 1962



A history of surveys is contained in the field notes

This plat represents a dependent resurvey of a portion of the subdivisional lines, T 21 S., R 6 W., Willamette Meridian, Oregon, designed to restore the corners in their true original locations according to the best available evidence.

Measured distances and directions have been adjusted by Cadastral Measurement Management (CMM), a computer software that incorporates a least squares adjustment routine. The adjusted bearings and distances are reported to the nearest second and 0.001 chain.

The lottings and areas are as shown on the plat approved February 25, 1885

The survey was executed by Bryan S. Seibold, Cadastral Surveyor, beginning September 9, 1997, and completed April 16, 1998, pursuant to Special Instructions dated August 18, 1997, under Group Number 1857, Oregon.

Timber in this area consists of fir, cedar, hemlock, yew, alder, maple, madrone, willow and chinquapin

The tie to the geodetic control station is reported as mean bearing and sea level distance.

LEGEND	
◊	Original corner previously remonumented
◆	Original corner remonumented this survey

UNITED STATES DEPARTMENT OF THE INTERIOR  
BUREAU OF LAND MANAGEMENT

Portland, Oregon November 5, 1999

This plat is strictly conformable to the approved field notes, and the survey, having been correctly executed in accordance with the requirements of law and the regulations of this Bureau, is hereby accepted

For the Director

Chief Cadastral Surveyor of Oregon

