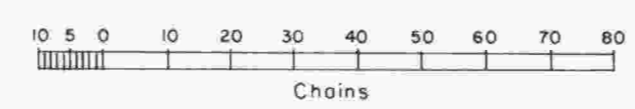
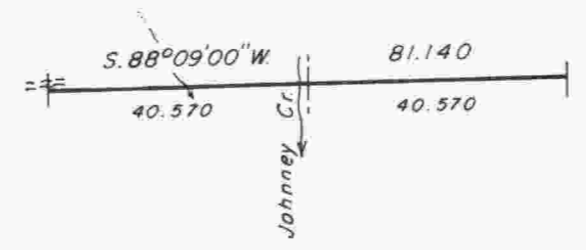
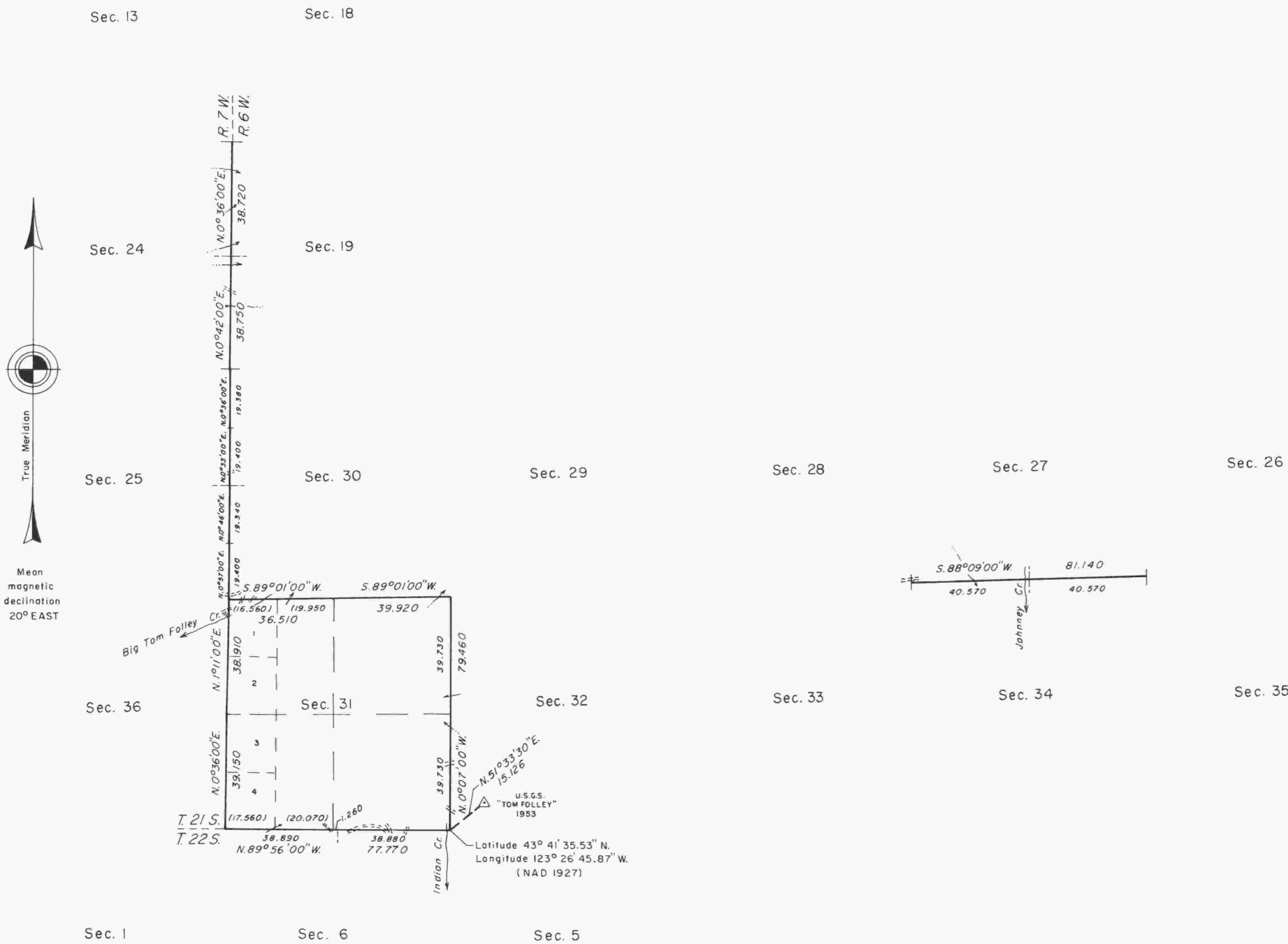


TOWNSHIP 21 SOUTH, RANGE 6 WEST, OF THE WILLAMETTE MERIDIAN, OREGON

DEPENDENT RESURVEY



A history of surveys is contained in the field notes.

This plat represents a dependent resurvey of a portion of the south and west boundaries and subdivisional lines, T. 21 S., R. 6 W., Willamette Meridian, Oregon, designed to restore the corners in their true original locations according to the best available evidence.

The lottings and areas are as shown on the plat approved April 26, 1872.

The survey was executed by Wayne L. Rogers and Dale T. Bedell, Cadastral Surveyors, beginning August 19, 1987, and completed November 4, 1987, pursuant to Special Instructions dated June 26, 1987, under Group Number 1392, Oregon.

Timber in this area consists of fir, hemlock, cedar, pine, yew, maple, chinquapin, oak, madrone and alder.

UNITED STATES DEPARTMENT OF THE INTERIOR
BUREAU OF LAND MANAGEMENT

Portland, Oregon May 4, 1990

This plat is strictly conformable to the approved field notes, and the survey, having been correctly executed in accordance with the requirements of law and the regulations of this Bureau, is hereby accepted.

For the Director

Wayne M. Gardner

Chief Cadastral Surveyor of Oregon