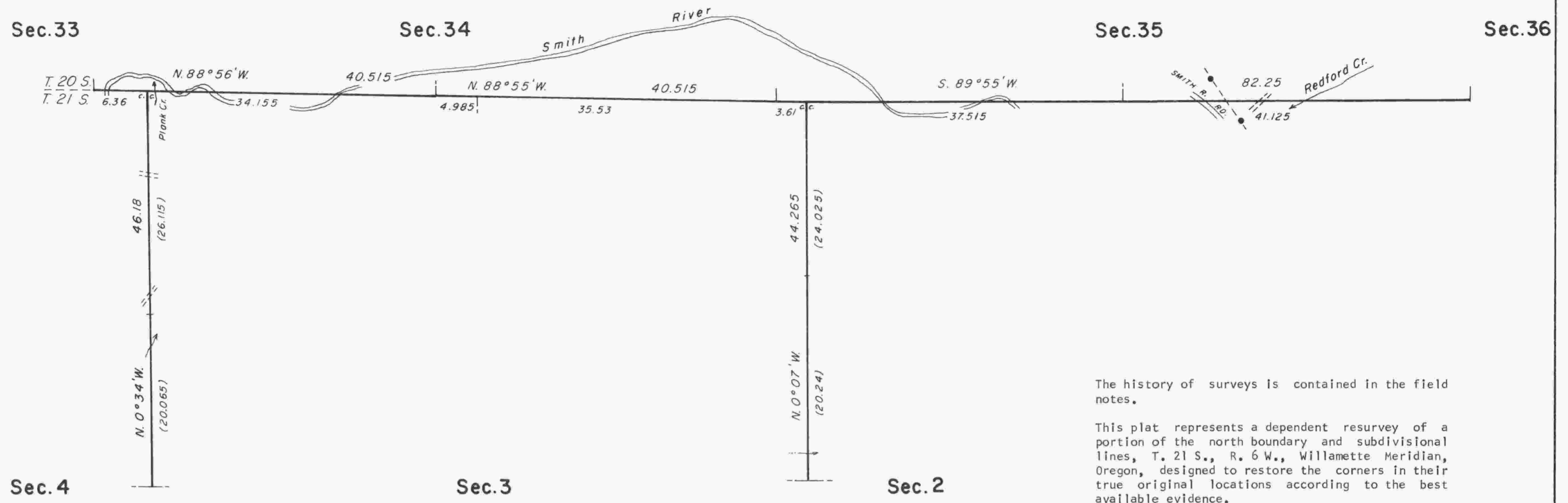


# TOWNSHIP 21 SOUTH, RANGE 6 WEST, OF THE WILLAMETTE MERIDIAN, OREGON DEPENDENT RESURVEY

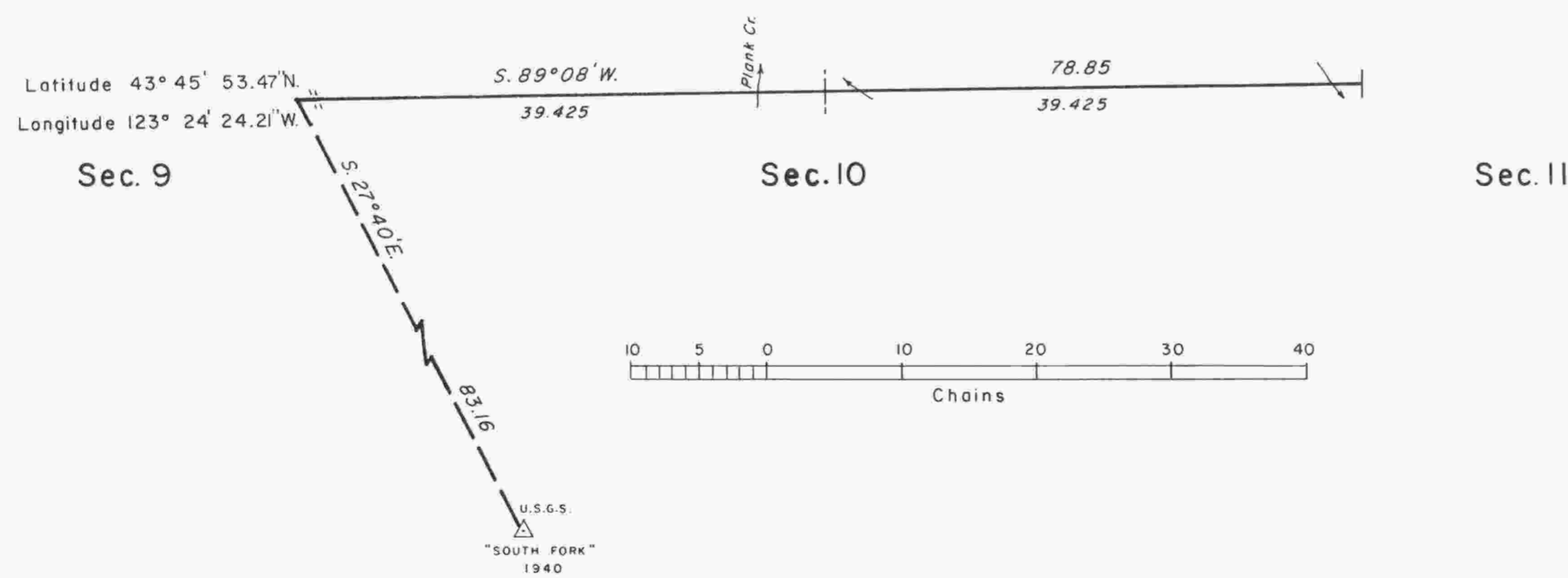


The history of surveys is contained in the field notes.

This plat represents a dependent resurvey of a portion of the north boundary and subdivisional lines, T. 21 S., R. 6 W., Willamette Meridian, Oregon, designed to restore the corners in their true original locations according to the best available evidence.

The survey was executed by Wayne L. Rogers, Cadastral Surveyor, beginning September 18, 1984, and completed May 22, 1985, pursuant to Special Instructions dated September 6, 1984, under Group Number 1231, Oregon.

Timber in this area consists of fir, hemlock, yew, madrone, ash, alder, maple, willow, dogwood, and chinquapin.



UNITED STATES DEPARTMENT OF THE INTERIOR  
BUREAU OF LAND MANAGEMENT  
Portland, Oregon                      February 20, 1987

This plat is strictly conformable to the approved field notes, and the survey, having been correctly executed in accordance with the requirements of law and the regulations of this Bureau, is hereby accepted.

For the Director

*William W. Ham*  
Chief Cadastral Surveyor of Oregon