

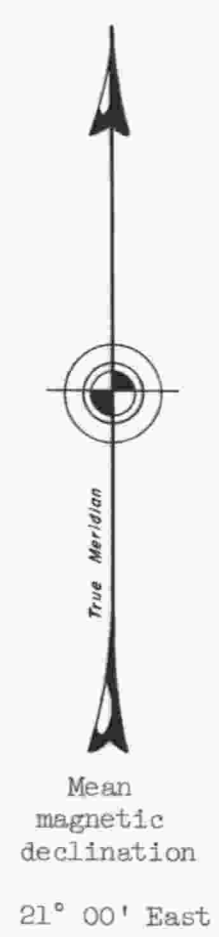
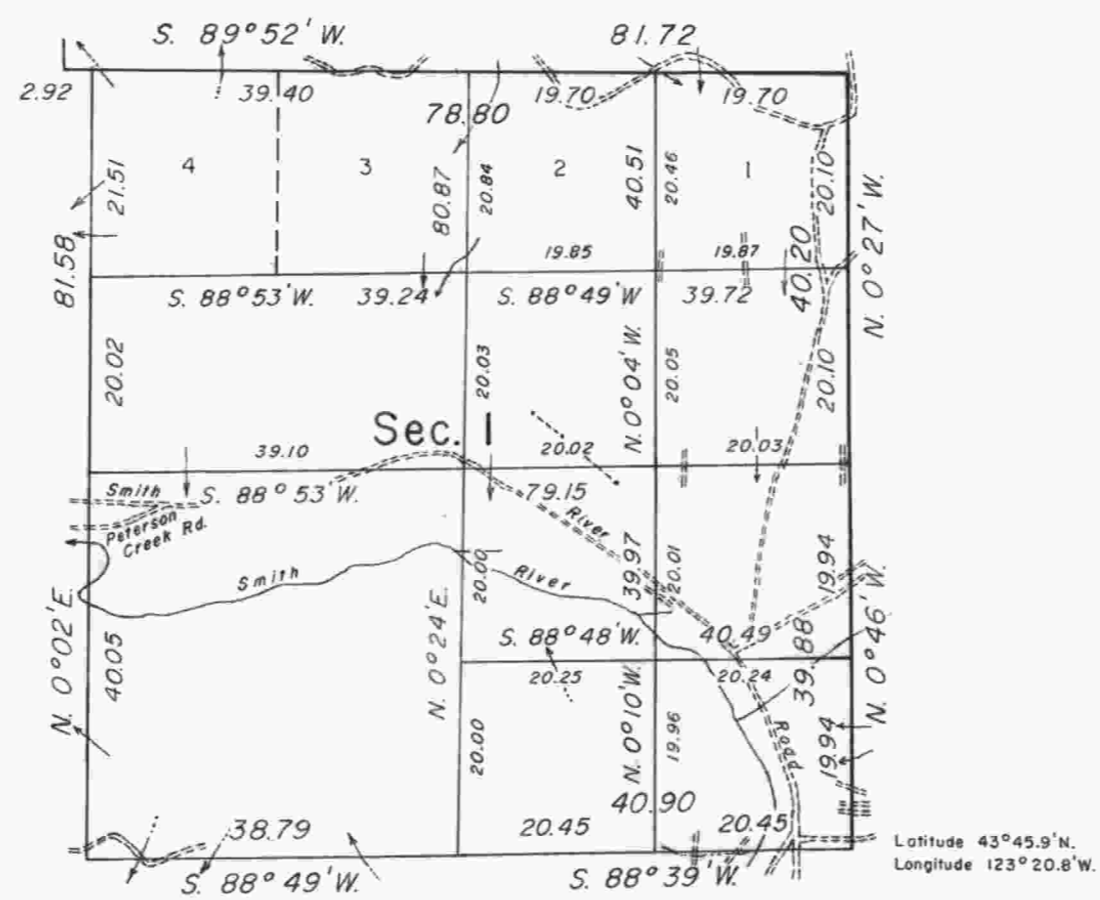
TOWNSHIP 21 SOUTH, RANGE 6 WEST, OF THE WILLAMETTE MERIDIAN, OREGON.

DEPENDENT RESURVEY AND SUBDIVISION

Sec. 35

Sec. 36

Sec. 2



This plat represents a retracement and reestablishment of portions of east and north boundaries and subdivisional lines of T. 21 S., R. 6 W., Willamette Meridian, Oregon, designed to restore the corners in their true original location according to the best available evidence; the lottings and areas are as shown on the plat approved February 25, 1885.

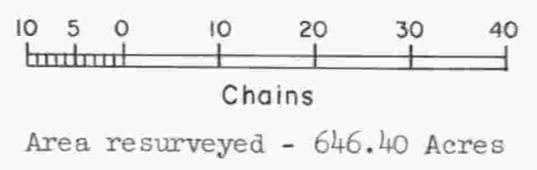
History of Surveys

The east boundary of the township was surveyed by Harvey Gordon and Charles T. Gardner in 1855. The south boundary of T. 20 S., R. 6 W., was surveyed by J. H. McClung in 1872. Part of the subdivisional lines of the township, including section 1, were surveyed by William P. Wright in 1884. He also retraced a portion of the east boundary of T. 21 S., R. 6 W.

Dependent resurvey of a portion of the east and north boundaries and subdivisional lines of T. 21 S., R. 6 W., and subdivision of section 1, of T. 21 S., R. 6 W., Willamette Meridian, Oregon, executed by Norman J. McDonald, May 2 to June 15, 1962, under Special Instructions dated March 23, 1962, which provide for the surveys included under Group No. 469, Oregon.

Sec. 11

Sec. 12



UNITED STATES DEPARTMENT OF THE INTERIOR
BUREAU OF LAND MANAGEMENT
Washington, D. C. September 26, 1963

This plat is strictly conformable to the approved field notes, and the survey, having been correctly executed in accordance with the requirements of law and the regulations of this Bureau, is hereby accepted.

For the Director

R.L. Brown

Acting Chief, Division of Engineering

Timber in this area consists of fir, cedar, hemlock, chinquapin, madrone, alder, maple, willow, and dogwood.

"Suspended May 22, 1991, see File 9632 (OR942)"

"Suspension Lifted, November 21, 1994, File 9632 (OR942). Refer to plat accepted April 29, 1994."

B.M.K

A.R.H.