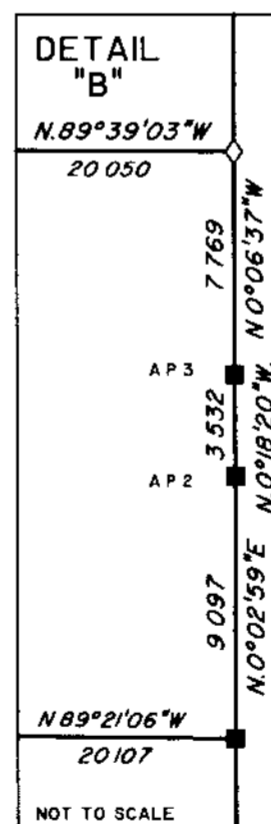
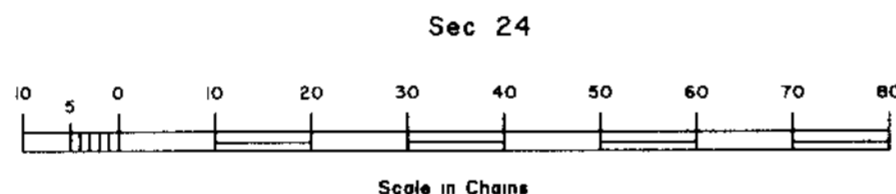
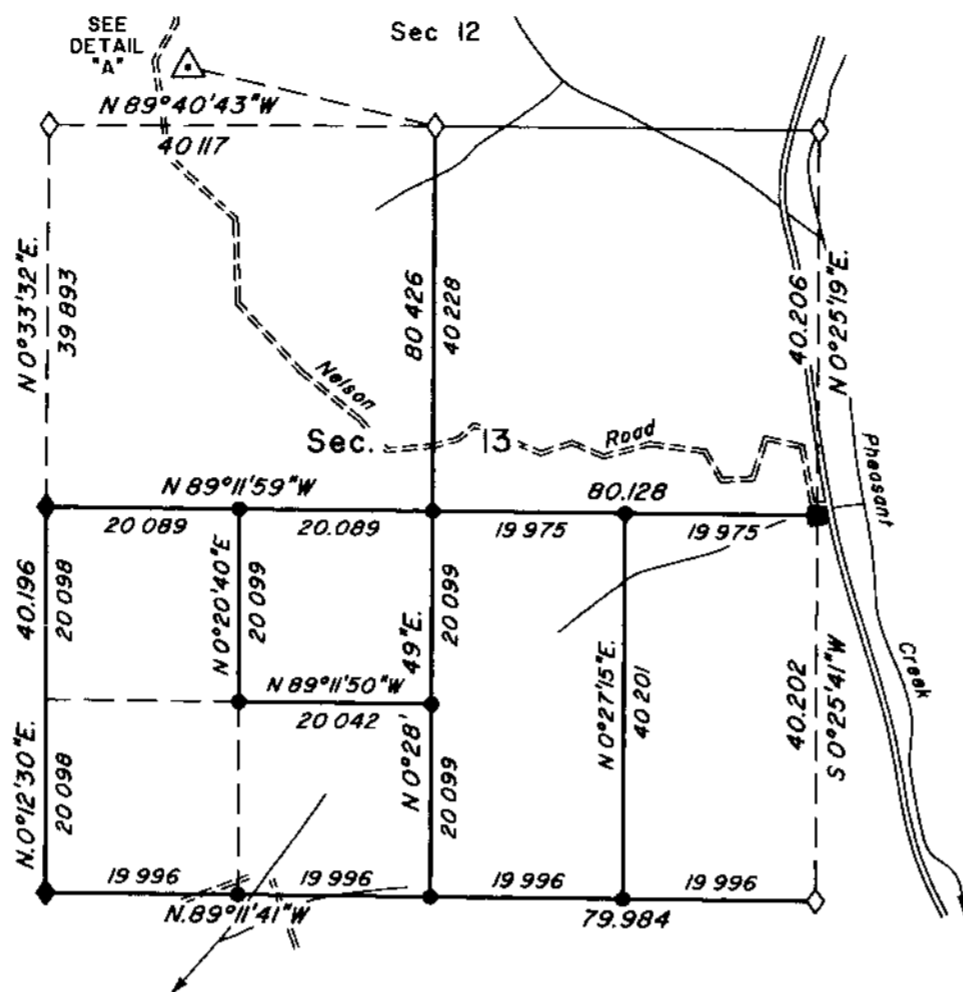
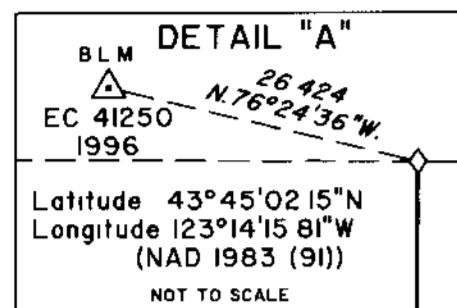


# TOWNSHIP 21 SOUTH, RANGE 5 WEST, OF THE WILLAMETTE MERIDIAN, OREGON

FILED  
 SHEET 1 OF 2 Date: 8-23-2000 By: J  
 This survey consists of  
 Map  
 Narrative Vol. 53  
 Corner Pt Pg. 20384  
 204  
 DOUGLAS COUNTY SURVEYOR

## DEPENDENT RESURVEY AND SUBDIVISION OF SECTIONS



- LEGEND**
- ◇ Original corner previously remonumented
  - ◆ Original corner remonumented this survey
  - Corner previously established or reestablished; remonumented this survey
  - Corner established or reestablished this survey

UNITED STATES DEPARTMENT OF THE INTERIOR  
 BUREAU OF LAND MANAGEMENT

Portland, Oregon May 16, 2000

This plat is strictly conformable to the approved field notes, and the survey, having been correctly executed in accordance with the requirements of law and the regulations of this Bureau, is hereby accepted

For the Director  
*Wayne M. Gardner*  
 Chief Cadastral Surveyor of Oregon

