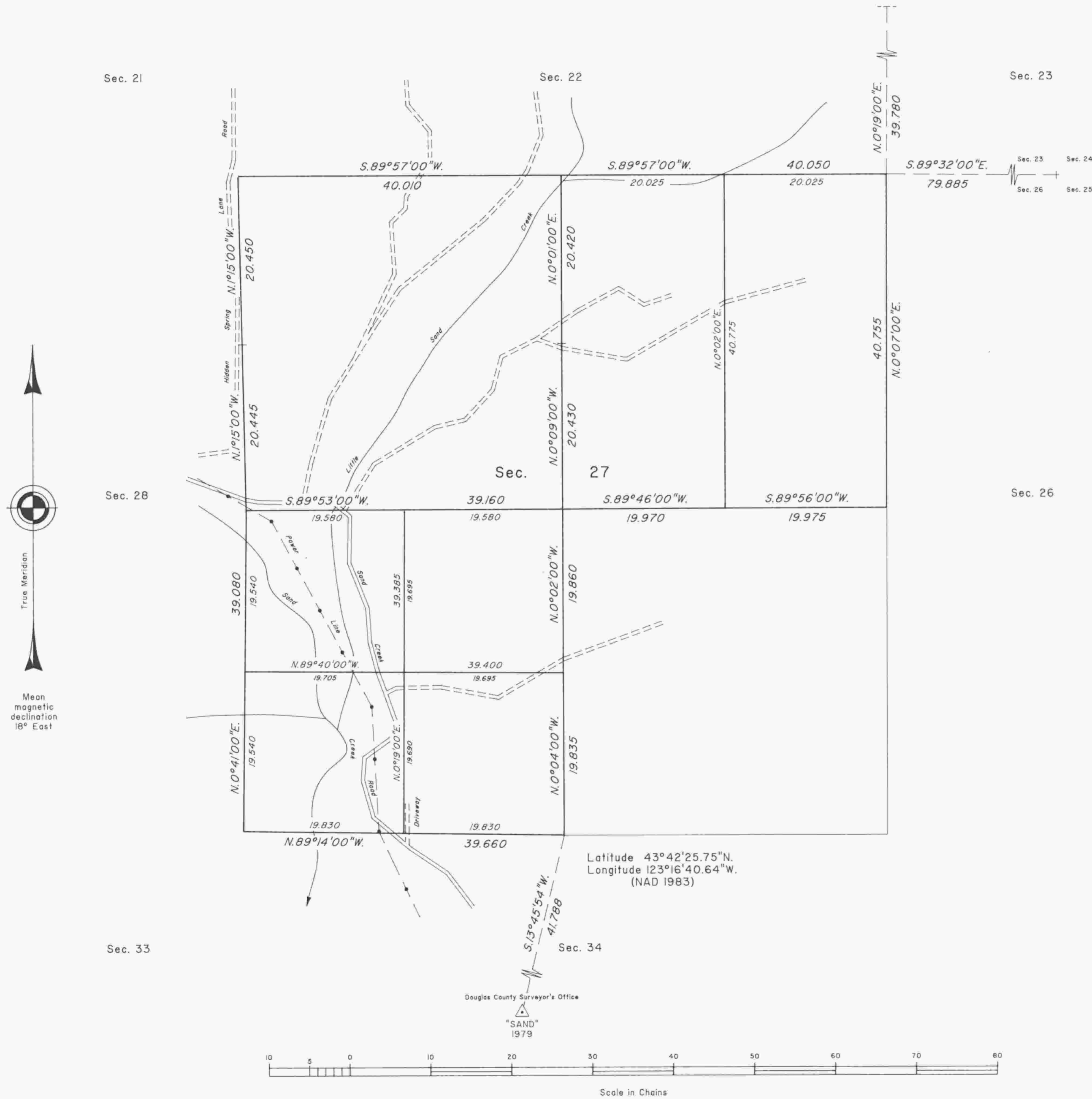


TOWNSHIP 21 SOUTH, RANGE 5 WEST, OF THE WILLAMETTE MERIDIAN, OREGON

DEPENDENT RESURVEY AND SUBDIVISION OF SECTION 27



A history of surveys is contained in the field notes.

This plat represents a dependent resurvey of a portion of the subdivisional lines, T. 21 S., R. 5 W., Willamette Meridian, Oregon, designed to restore the corners in their true original locations according to the best available evidence, and the subdivision of section 27.

The lottings and areas are as shown on the plat approved February 20, 1856.

The survey was executed by Bryan S. Seibold, Cadastral Surveyor, beginning September 8, 1992, and completed April 26, 1993, pursuant to Special Instructions dated April 2, 1992, under Group Number 1639, Oregon.

Timber in this area consists of fir, cedar, hemlock, pine, alder, chinquapin, madrone and maple.

The tie to the geodetic control station is reported as mean bearing and sea level distance.

UNITED STATES DEPARTMENT OF THE INTERIOR
BUREAU OF LAND MANAGEMENT

Portland, Oregon September 14, 1995

This plat is strictly conformable to the approved field notes, and the survey, having been correctly executed in accordance with the requirements of law and the regulations of this Bureau, is hereby accepted.

For the Director
Wayne M. Gardner
Chief Cadastral Surveyor of Oregon