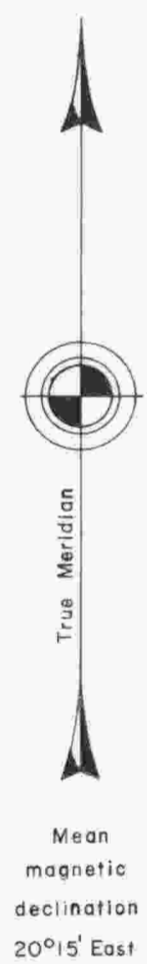
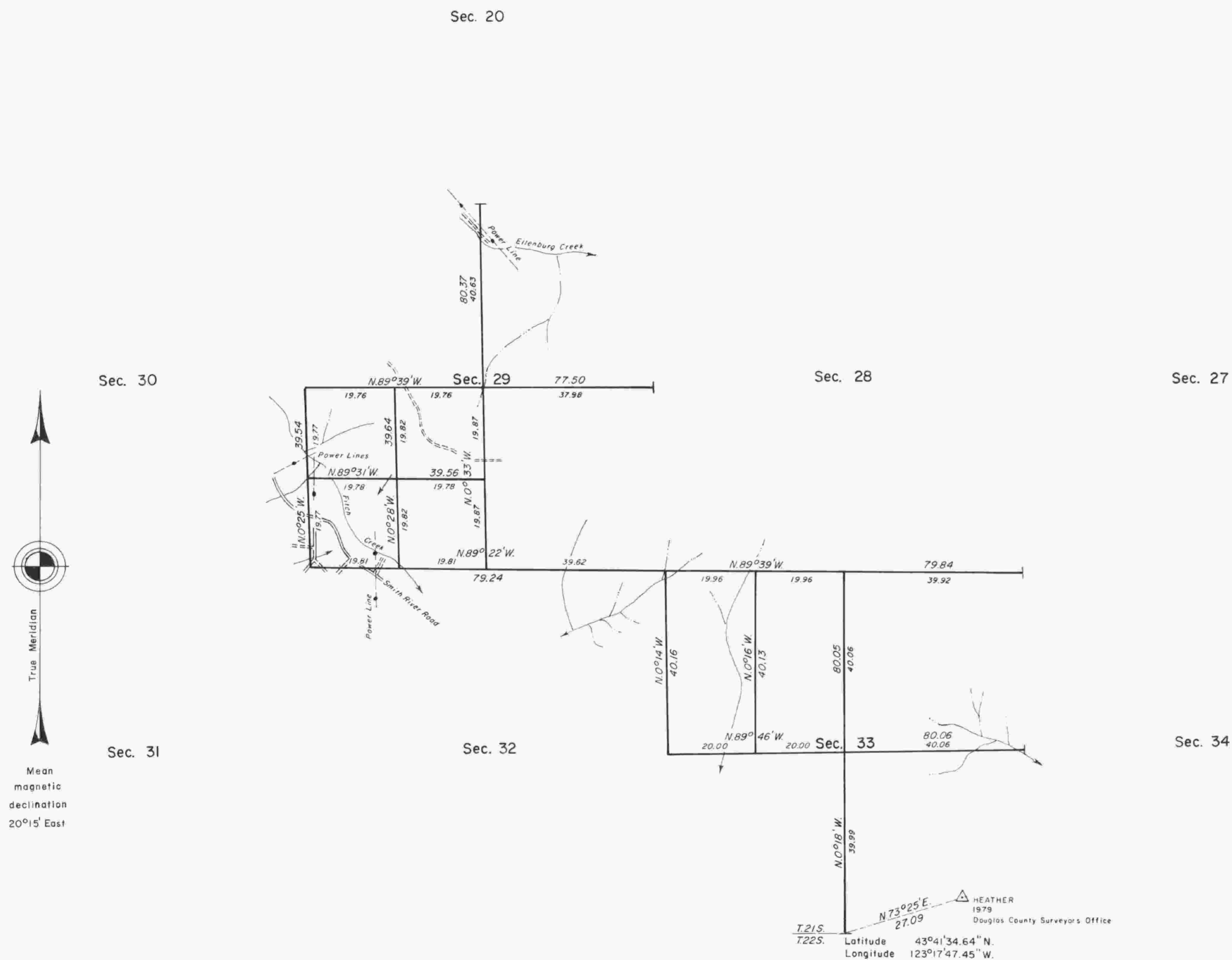


TOWNSHIP 21 SOUTH, RANGE 5 WEST, OF THE WILLAMETTE MERIDIAN, OREGON.

DEPENDENT RESURVEY AND SUBDIVISION OF SECTIONS 29 AND 33



A history of surveys is contained in the field notes.

This plat represents a dependent resurvey of a portion of the subdivisional lines designed to restore the corners in their true original locations according to the best available evidence, T. 21 S., R. 5 W., Willamette Meridian, Oregon, and the subdivision of sections 29 and 33.

The lottings and areas are as shown on the plat approved February 20, 1856.

The survey was executed by Wayne L. Rogers, Cadastral Surveyor, beginning April 27, 1981 and completed December 31, 1981, pursuant to Special Instructions dated April 2, 1981, for Group No. 1059, Oregon.

Timber in this area consists of fir, yew, oak, madrone, pine, ash, alder, maple, and chinquapin.

T.21 S. 722 S. N73°02'5\"/>

UNITED STATES DEPARTMENT OF THE INTERIOR
BUREAU OF LAND MANAGEMENT
Portland, Oregon June 1, 1984

This plat is strictly conformable to the approved field notes, and the survey, having been correctly executed in accordance with the requirements of law and the regulations of this Bureau, is hereby accepted.

For the Director

William W. Glenn

Chief Cadastral Surveyor of Oregon

