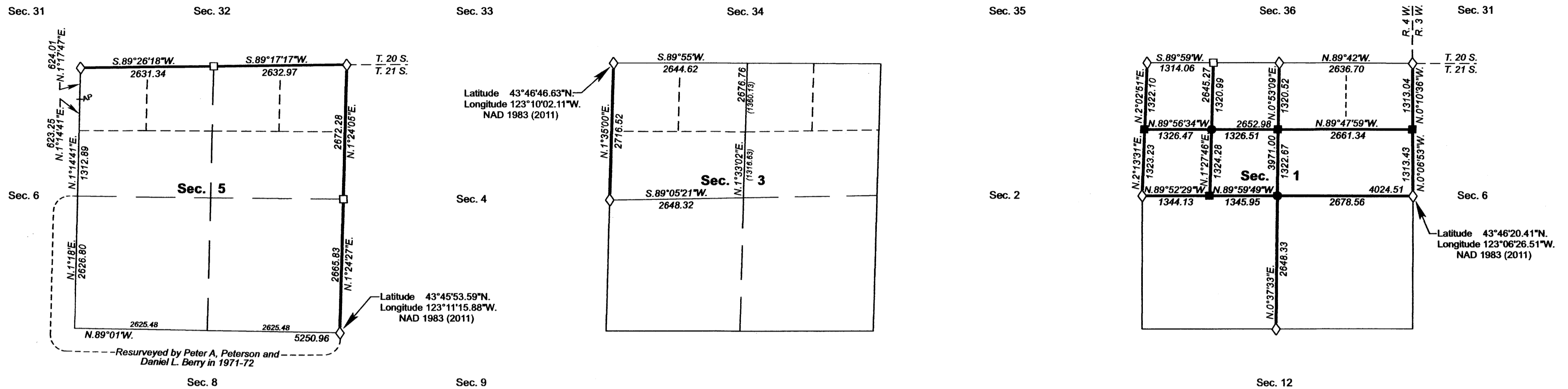


Date: 6/14/2023 By: JC
 This survey consists of:
 Map: _____
 Line: VOL. 59
 Notes: PGS: 24084-24100

TOWNSHIP 21 SOUTH, RANGE 4 WEST, OF THE WILLAMETTE MERIDIAN, OREGON

DEPENDENT RESURVEY AND SUBDIVISION OF SECTION 1

DOUGLAS COUNTY SURVEYOR



OFFICIALLY FILED: 7/21/2022



LEGAL SUBDIVISION	OFFICIAL ACRES
SECTION 1	
Unnumbered Lot NE1/4 NE1/4	39.96
Unnumbered Lot NW1/4 NE1/4	40.11
Unnumbered Lot NW1/4 NW1/4	40.02
SECTION 3	
Unnumbered Lot NE1/4 NW1/4	41.55
Unnumbered Lot NW1/4 NW1/4	42.12
SW1/4 NW1/4	40.00
SE1/4 NW1/4	39.97
SECTION 5	
Unnumbered Lot NE1/4 NE1/4	40.08
Unnumbered Lot NW1/4 NE1/4	39.36
SW1/4 NE1/4	39.96
SE1/4 NE1/4	40.14
Unnumbered Lot NE1/4 NW1/4	38.64
Unnumbered Lot NW1/4 NW1/4	37.98
SW1/4 NW1/4	39.66
SE1/4 NW1/4	39.79
NE1/4 SW1/4	39.80
NW1/4 SW1/4	39.66
SW1/4 SW1/4	39.65
SE1/4 SW1/4	39.46
NE1/4 SE1/4	40.13
NW1/4 SE1/4	39.97
SW1/4 SE1/4	39.95
SE1/4 SE1/4	40.10
TOTAL AREA FEDERAL INTEREST LAND RESURVEYED	918.06

LEGEND

- ◇ Original corner previously remonumented
- Corner previously established or reestablished
- Corner previously established or reestablished; remonumented this survey
- Corner established or reestablished this survey

NOTE:
 The lightweight exterior lines with bearings and distances shown in sections 1 and 3 were surveyed by Floyd A. Brooks, Gurdon S. Popken, Gary T. Oviatt and Timothy A. Kent in 1970-71, and were utilized to calculate the areas of Federal interest land.

The lightweight interior lines with bearings and distances shown in section 3 were surveyed by Daniel N. Patterson and Craig L. Wanless in 1993, and were utilized to calculate the areas of Federal interest land.

Unless otherwise noted, the lightweight exterior lines with bearings and distances shown in section 5 were surveyed by Daniel N. Patterson in 2010, and were utilized to calculate the areas of Federal interest land.

A history of surveys, corner descriptions, and other relevant information are contained in the field notes.

This plat represents the dependent resurvey of a portion of the east and north boundaries and subdivisional lines, designed to restore the corners in their true original locations according to the best available evidence, and the subdivision of section 1, Township 21 South, Range 4 West, Willamette Meridian, Oregon.

Official areas based on the measurements of this survey have been returned for Federal interest land where indicated. Aliquot part legal subdivisions retain their aliquot characteristics and refer to precisely the same land as that which was previously identified by its original survey or description. A lot can only be subdivided by survey or supplemental plat. Except as indicated hereon, the lottings and areas are as shown on the plat approved February 20, 1856.

Survey executed by Joseph M. Mannix, Cadastral Surveyor, beginning May 27, 2018, and completed February 6, 2019, pursuant to special instructions approved May 7, 2018, supplemental special instructions approved May 18, 2018, second supplemental instructions approved November 7, 2018, for Group No. 2921, Oregon.

UNITED STATES DEPARTMENT OF THE INTERIOR
 BUREAU OF LAND MANAGEMENT

Portland, Oregon

This plat is strictly conformable to the approved field notes, and the survey, having been correctly executed in accordance with the requirements of law and the regulations of this Bureau, is hereby accepted.

For the Director
Mary J. M. Harts
 Chief Cadastral Surveyor of Oregon

April 26, 2022
 Date

