

TOWNSHIP 21 SOUTH, RANGE 4 WEST, OF THE WILLAMETTE MERIDIAN, OREGON

DEPENDENT RESURVEY AND SUBDIVISION OF SECTION 7

Date: 9/18/2017 By: JC
This survey consists of:
Map: T21-4 2017-1
Narrative: VOL. 58 PAGES
Corner Rpt: 23464-23474

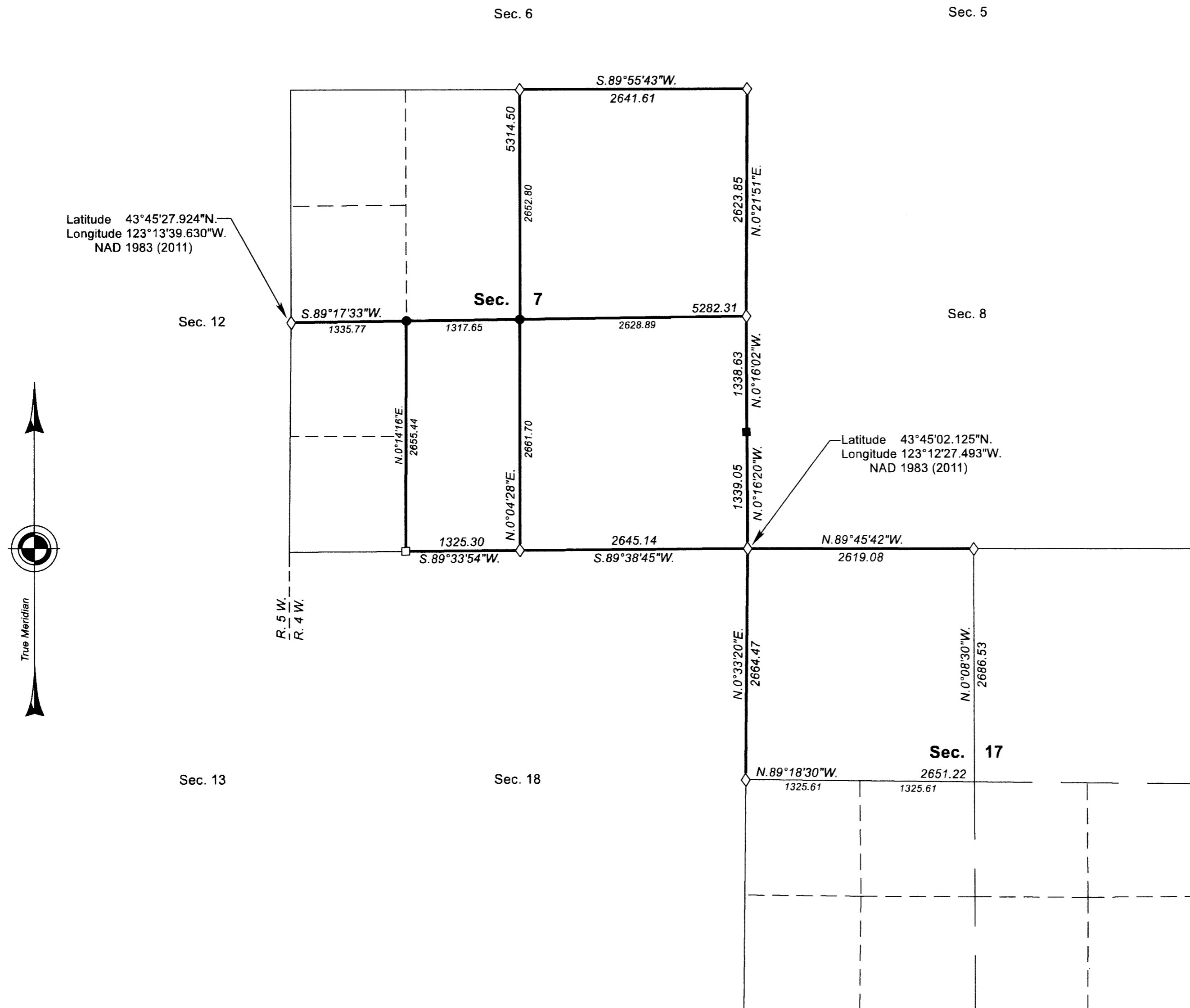
DOUGLAS COUNTY
SURVEYOR

A history of surveys, corner descriptions, and other relevant information are contained in the field notes.

This plat represents the dependent resurvey of a portion of the subdivisional lines, designed to restore the corners in their true original locations according to the best available evidence, and the subdivision of section 7, Township 21 South, Range 4 West, Willamette Meridian, Oregon.

Official areas based on the measurements of this survey have been returned for Federal interest land where indicated. Aliquot part legal subdivisions retain their aliquot characteristics and refer to precisely the same land as that which was previously identified by its original survey or description. Except as indicated hereon, the lottings and areas are as shown on the plat approved February 20, 1856, and the plat accepted July 10, 1990.

Survey executed by Jeffrey O. Covington, Cadastral Surveyor, beginning May 4, 2015, and completed June 11, 2015, pursuant to special instructions approved May 4, 2015, for Group No. 2762, Oregon.



LEGAL SUBDIVISION	OFFICIAL ACRES
SECTION 7	
NE1/4 NE1/4	39.84
NW1/4 NE1/4	40.06
SW1/4 NE1/4	39.96
SE1/4 NE1/4	39.74
E1/2 SW1/4	80.92
NE1/4 SE1/4	40.40
NW1/4 SE1/4	40.28
SW1/4 SE1/4	40.40
SE1/4 SE1/4	40.53
SECTION 17	
NE1/4 NW1/4	40.43
NW1/4 NW1/4	40.26
SW1/4 NW1/4	40.49
SE1/4 NW1/4	40.66
TOTAL AREA	563.97
FEDERAL INTEREST LAND RESURVEYED	

LEGEND	
◇	Original corner previously remonumented
□	Corner previously established or reestablished
■	Corner previously established or reestablished; remonumented this survey
●	Corner established or reestablished this survey

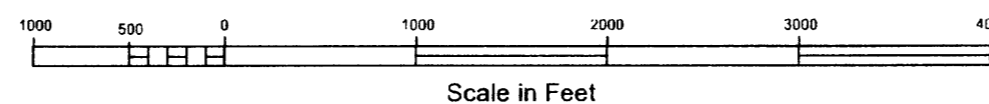
UNITED STATES DEPARTMENT OF THE INTERIOR
BUREAU OF LAND MANAGEMENT
Portland, Oregon

This plat is strictly conformable to the approved field notes, and the survey, having been correctly executed in accordance with the requirements of law and the regulations of this Bureau, is hereby accepted.

For the Director
Mary J. M. Hult
Chief Cadastral Surveyor of Oregon

June 16, 2017
Date

NOTE:
The interior lightweight lines with bearings and distances shown were surveyed by Wayne L. Rogers, Dale T. Bedell, and Boyd W. Peterson in 1988-89, and were utilized to calculate the Federal interest land in section 17.



OFFICIALLY FILED: 7/20/2017