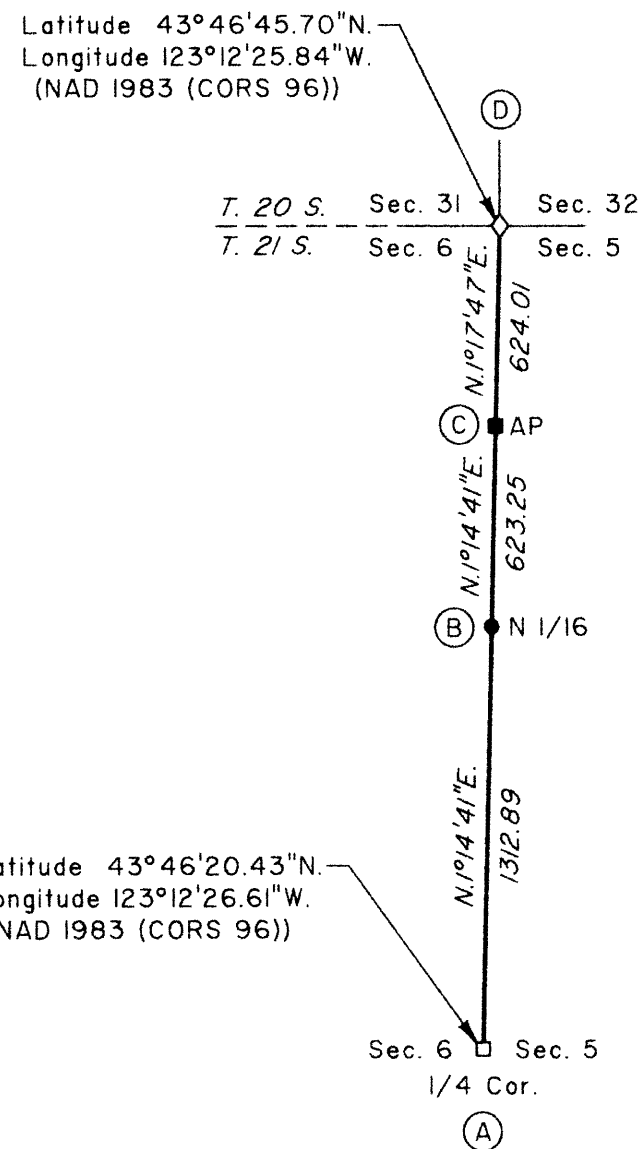


TOWNSHIP 21 SOUTH, RANGE 4 WEST, OF THE WILLAMETTE MERIDIAN, OREGON

FILED
 Date: 3/5/2012 By: JC
 This survey consists of:
 Map: THIS PLAT - 2012-1 AND
 Narrative: A COPY IN VOL. 57
 Corner Rpt: PAGE 2777
 DOUGLAS COUNTY
 SURVEYOR

DEPENDENT RESURVEY



(A) The 1/4 sec. cor. of secs. 5 and 6, monumented with an iron post, 2 1/2 ins. diam., firmly set, projecting 3 ins. above ground, with brass cap mkd.

T 21 S R 4 W
 1/4
 S 6 | S 5
 1972

from which the remains of bearing trees mkd. by Peterson and Berry

A fir, 28 ins. diam., bears N. 4° E., 22.7 ft. dist., with a healed blaze. (Record, 24.4 ft.)

A fir stump, 30 ins. diam., bears N. 87° W., 29.0 ft. dist., with a healed blaze.

and a new bearing tree

A fir, 6 ins. diam., bears N. 73 3/4° W., 20.3 ft. dist., mkd. 1/4 S6 BT.

(B) Point for the N 1/16 sec. cor. of secs. 5 and 6

Set a stainless steel post, 28 ins. long, 2 1/2 ins. diam., 24 ins. in the ground, with brass cap mkd.

N 1/16
 S 6 | S 5
 2010

from which

A fir, 13 ins. diam., bears S. 71 1/2° E., 18.0 ft. dist., mkd. N 1/16 S5 BT.

A fir, 23 ins. diam., bears S. 6 1/4° W., 43.8 ft. dist., mkd. N 1/16 S6 BT.

Deposit a magnet in a white plastic case at the base of the stainless steel post.

(C) A point erroneously established as the N-N 1/64 sec. cor. of secs. 5 and 6 by Roberts, PLS No. 1039, in 1992, and is accepted as a point on line and now functions as an angle point, monumented with an iron rod, 5/8 in. diam., firmly set, projecting 2 ins. above the ground, with yellow plastic cap mkd. ROBERTS RLS 1039, from which the remains of bearing trees mkd. by Roberts

A roothole bears N. 55° E., 9.5 ft. dist., with a decayed fir trunk, 14 ins. diam., lying alongside, with a healed blaze.

A roothole bears S. 33° E., 6.8 ft. dist., with a decayed fir trunk, 16 ins. diam., lying alongside, with a healed blaze.

At the corner point

Set a stainless steel post, 28 ins. long, 2 1/2 ins. diam., 24 ins. in the ground, with brass cap mkd.

AP
 S 6 | S 5
 2010

Deposit a magnet in a white plastic case at the base and iron rod inside the stainless steel post.

(D) The cor. of secs. 5, 6, 31, and 32, on the N. bdy. of the Tp., monumented with an iron post, 1 in. diam., firmly set, projecting 10 ins. above the ground, with brass cap mkd.

DOUG CO SURVEY OFFICE

T 20 S
 S 31 | S 32 R
 4
 S 6 | S 5 W
 T 21 S
 DAY 366
 1968 366

from which the remains of bearing trees mkd. by McChesney, reported by Wanless and Patterson

A fir, 22 ins. diam., bears S. 26 3/4° E., 44.9 ft. dist., with a healed blaze.

A roothole bears N. 7° W., 19.8 ft. dist., with a fir trunk, 39 ins. diam., lying alongside, with a healed blaze.

and a bearing tree mkd. by Tracy, reported by Wanless and Patterson

A fir, 20 ins. diam., bears S. 46 3/4° W., 40.3 ft. dist., with a healed blaze.

and the remains of a bearing tree mkd. by Wanless and Patterson

A roothole bears N. 89 1/2° E., 45.5 ft. dist., with a fir trunk, 14 ins. diam., lying alongside, with a healed blaze.

and new bearing trees

A cherry tree, 6 ins. diam., bears N. 53 3/4° E., 12.3 ft. dist., mkd. T20S R4W S32 BT.

A yew, 7 ins. diam., bears S. 73 3/4° E., 22.9 ft. dist., mkd. T21S R4W S5 BT.

There are no suitable bearing trees available in sec. 31.

Corner is located at the corner of fences extending N. 30° E. and S. 30° W.

This plat constitutes the entire record of the dependent resurvey of a portion of the subdivisional lines, Township 21 South, Range 4 West, Willamette Meridian, Oregon, designed to restore the corners in their true original locations according to the best available evidence.

The survey was executed in accordance with the specification set forth in the Manual of Surveying Instructions (2009), and the special instructions dated June 10, 2010, and approved June 10, 2010, for Group No. 2335, Oregon.

The directions of the lines are based on the true meridian as determined by Global Positioning System (GPS) measurements, carried forward by sustained angulation using conventional survey techniques. All measurements along the lines were derived through the use of GPS and conventional survey techniques. Measured distances and directions have been adjusted by computer software that incorporates a least squares adjustment routine. The adjusted mean bearings and mean horizontal ground elevation distances are reported to the nearest second and 0.01 foot.

Preliminary to the resurvey, the lines of the official original surveys and resurveys were retraced and search was made for all corners, lines, other calls of the record, and, where available, collateral evidence of local surveys and corners. Identified corners were remonumented in their original positions. The retracement data were thoroughly verified and only the true line field data are given hereon.

Each new bearing tree has a 2 1/2 inch x 1/4 inch magnetic nail (Mag Nail) driven at the base on right side center, unless otherwise noted in the corner description.

The geographic positions shown hereon were determined by ties from temporary GPS control points, utilizing dual frequency, carrier phase GPS receivers, and processed using the National Geodetic Survey's Online Positioning User Service (OPUS).

Survey executed by Daniel N. Patterson, Cadastral Surveyor, beginning July 12, 2010, and completed August 4, 2010. He was assisted by Matthew A. Clifford, Jonathan V. Eastman and Marc A. Montpas, Surveying Technicians.

The history of official Federal surveys pertaining to this resurvey is as follows:

In 1855-56, Harvey Gordon and Charles T. Gardner, U.S. Deputy Surveyors, surveyed the north boundary and subdivisional lines, as shown on the official plat of survey approved February 20, 1856.

In 1970-71, Floyd A. Brooks, Gurdon S. Popken, Gary T. Oviatt, and Timothy A. Kent, Cadastral Surveyors, dependently resurveyed the south boundary, T. 20 S., R. 4 W., as shown on the official plat of survey accepted September 16, 1977.

In 1971-72, Peter A. Peterson and Daniel L. Berry, Cadastral Surveyors, dependently resurveyed a portion of the subdivisional lines, as shown on the official plat of survey accepted March 30, 1977.

In 1991-93, Craig L. Wanless and Daniel N. Patterson, Cadastral Surveyors, dependently resurveyed a portion of the south boundary, T. 20 S., R. 4 W., as shown on the official plat of survey accepted May 12, 1994.

The following County Survey (CS) plats and Restored Corner Index (RCI) field notes on file in Lane County Surveyor's Office, are referred to in subsequent corner descriptions and referenced by surveyor's last name, title or Professional Land Surveyor (PLS) No., and year.

Year	Name Title/Reg. No.	File No.
1958	Glenn McChesney Land Agent	RCI 1535
1968	Vernon R. Tracy DCSO	RCI 3960
1992	Leslie D. Roberts PLS 1039	CS M116-48

LEGEND

- ◊ Original corner previously remonumented
- Corner previously established or reestablished
- Corner previously established or reestablished; remonumented this survey
- Corner established or reestablished this survey

UNITED STATES DEPARTMENT OF THE INTERIOR
 BUREAU OF LAND MANAGEMENT
 Portland, Oregon

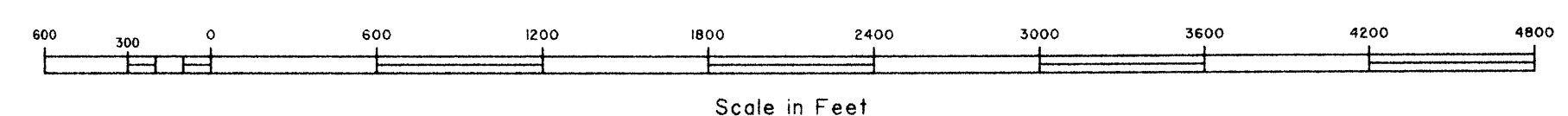
The survey represented by this plat, having been correctly executed in accordance with the requirements of law and the regulations of this Bureau, is hereby accepted.

For the Director
Mary J. M. Hart
 Chief Cadastral Surveyor of Oregon

I, Daniel N. Patterson, Cadastral Surveyor, HEREBY CERTIFY upon honor, that in pursuance of special instructions bearing the approval date of the 10th day of June, 2010, and the assignment instructions bearing the date of the 10th day of June, 2010, I have dependently resurveyed a portion of the subdivisional lines, Township 21 South, Range 4 West, Willamette Meridian, Oregon, which is represented upon this plat as having been executed by me and under my direction; and that said survey has been made in strict conformity with said special instructions, the Manual of Surveying Instructions, and in the specific manner described on this plat.

Daniel N. Patterson
 Cadastral Surveyor

12-12-11
 Date



OFFICIALLY FILED: 11/12/2012

December 27, 2011
 Date