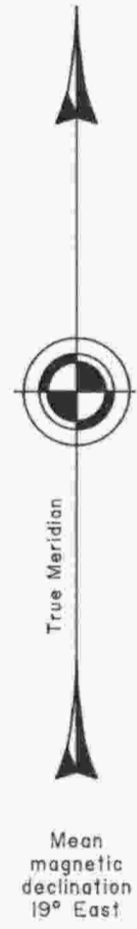
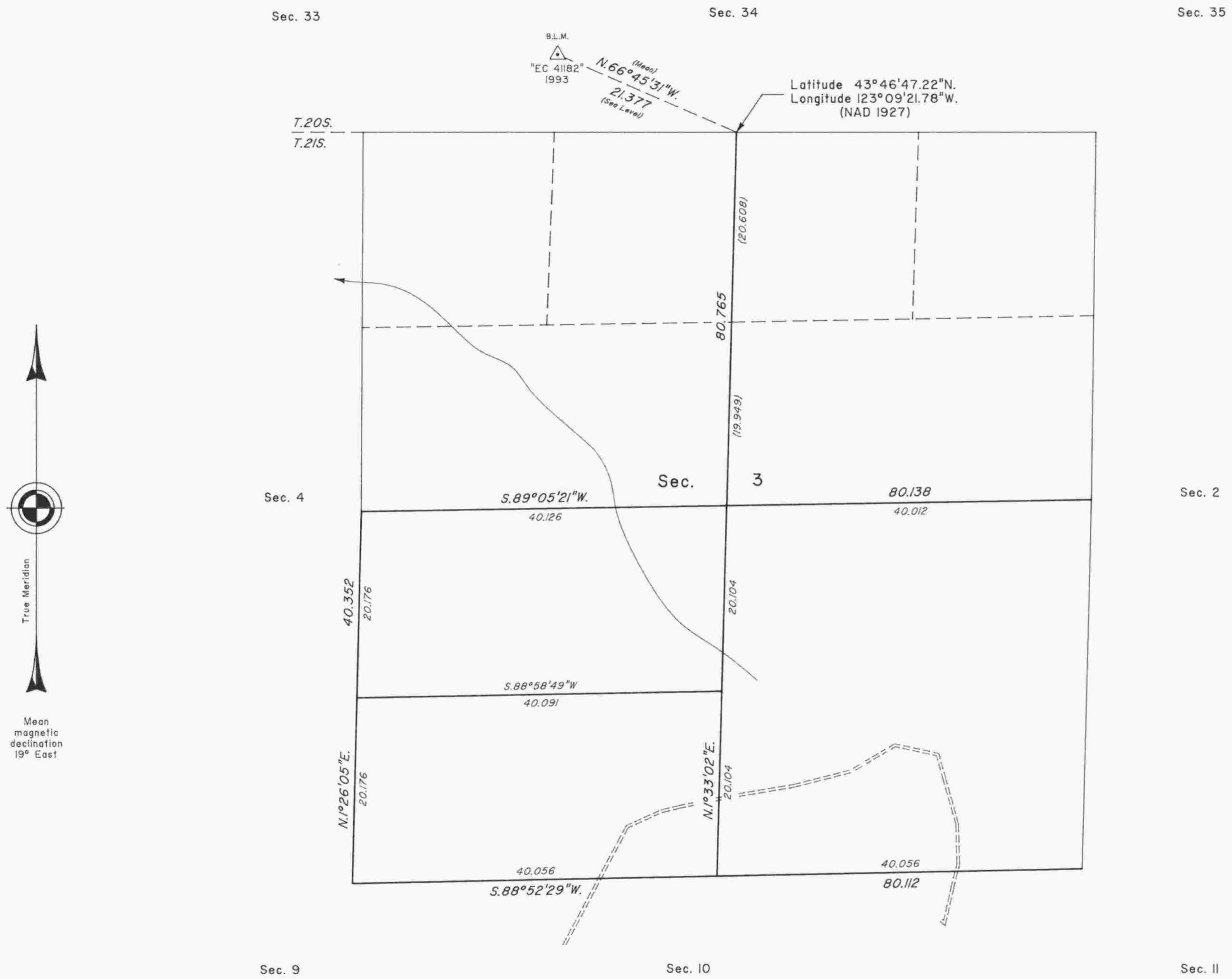


TOWNSHIP 21 SOUTH, RANGE 4 WEST, OF THE WILLAMETTE MERIDIAN, OREGON

DEPENDENT RESURVEY AND SUBDIVISION OF SECTION 3



A history of surveys is contained in the field notes.

This plat represents a dependent resurvey of a portion of the subdivisional lines, T. 21 S., R. 4 W., Willamette Meridian, Oregon, designed to restore the corners in their true original locations according to the best available evidence, and the subdivision of section 3.

Measured distances and directions have been adjusted by Cadastral Measurement Management (CMM), a computer software that incorporates a least squares adjustment routine. The adjusted bearings and distances are reported to the nearest second and 0.001 chain.

The areas are as shown on the plat approved February 20, 1856.

The survey was executed by Daniel N. Patterson and Craig L. Wanless, Cadastral Surveyors, beginning August 9, 1993, and completed October 12, 1993, pursuant to Special Instructions dated July 8, 1993, under Group Number 1705, Oregon.

Timber in this area consists of fir, hemlock, cedar, alder and maple.

The tie to the geodetic control station is reported as mean bearing and sea level distance.

UNITED STATES DEPARTMENT OF THE INTERIOR
BUREAU OF LAND MANAGEMENT
Portland, Oregon December 19, 1994

This plat is strictly conformable to the approved field notes, and the survey, having been correctly executed in accordance with the requirements of law and the regulations of this Bureau, is hereby accepted.

For the Director
Wayne M. Gardner
Chief Cadastral Surveyor of Oregon