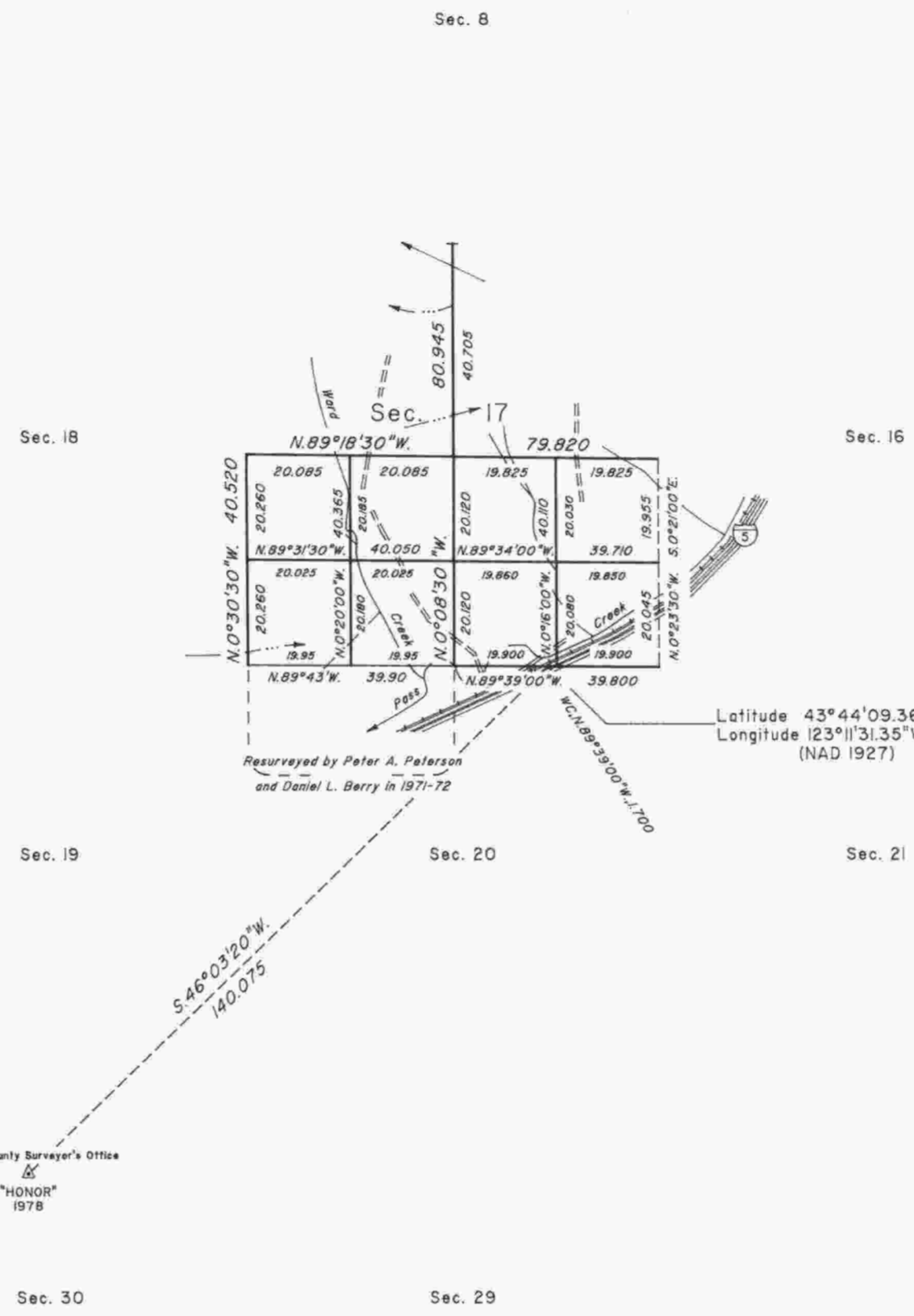


TOWNSHIP 21 SOUTH, RANGE 4 WEST, OF THE WILLAMETTE MERIDIAN, OREGON

DEPENDENT RESURVEY AND SUBDIVISION OF SECTIONS 17 AND 31



Mean magnetic declination 18°45' East



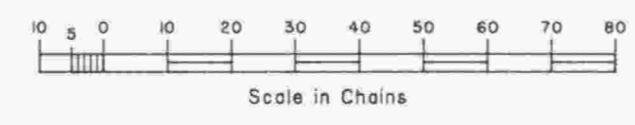
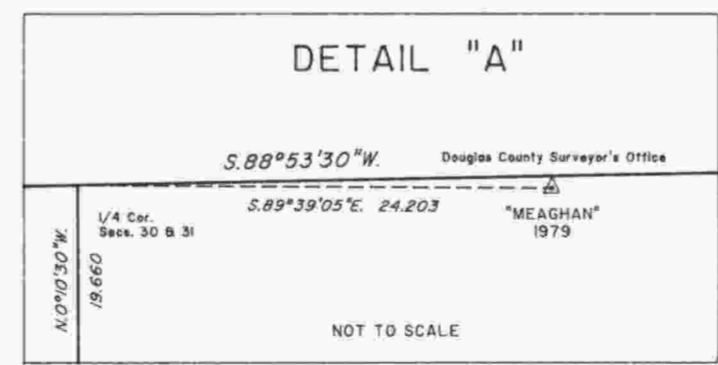
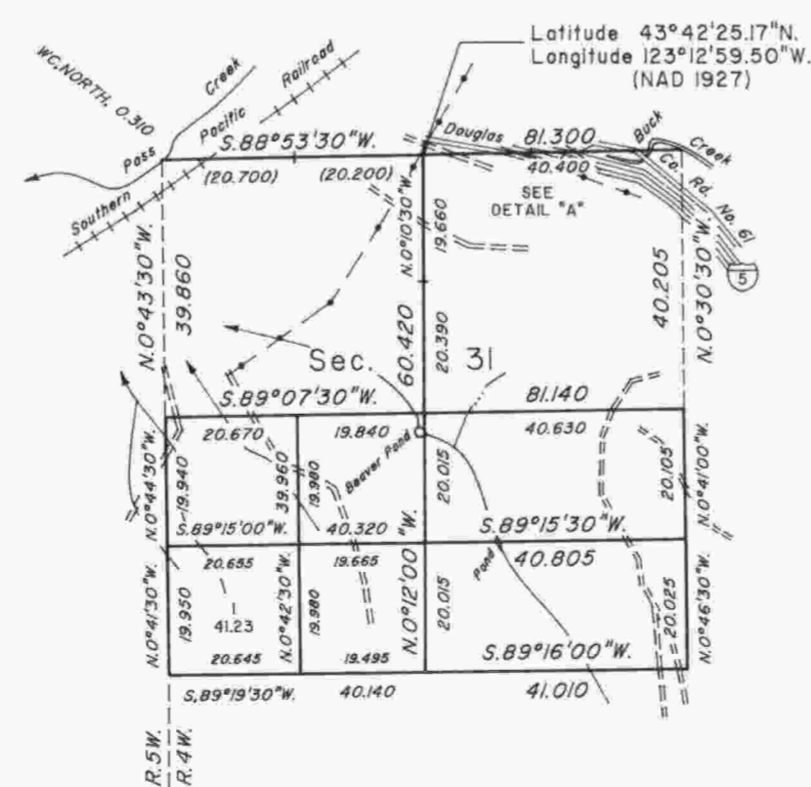
A history of surveys is contained in the field notes.

This plat represents a dependent resurvey of a portion of the south and west boundaries and subdivisional lines, T. 21 S., R. 4 W., Willamette Meridian, Oregon, designed to restore the corners in their true original locations according to the best available evidence, and the subdivision of sections 17 and 31.

Except as shown hereon, the lottings and areas are as shown on the plat approved February 20, 1856.

The survey was executed by Wayne L. Rogers, Dale T. Bedell, Boyd W. Peterson, Cadastral Surveyors, and Garry L. Moore, Surveying Technician, beginning February 2, 1988, and completed January 6, 1989, pursuant to Special Instructions dated September 9, 1987, and Supplemental Special Instructions dated September 6, 1988, under Group Number 1406, Oregon.

Timber in this area consists of fir, cedar, hemlock, yew, pine, alder, madrone, oak, maple, chinquapin, dogwood and cascara buckthorn.



UNITED STATES DEPARTMENT OF THE INTERIOR
BUREAU OF LAND MANAGEMENT

Portland, Oregon July 10, 1990

This plat is strictly conformable to the approved field notes, and the survey, having been correctly executed in accordance with the requirements of law and the regulations of this Bureau, is hereby accepted.

For the Director

Wayne M. Gardner

Chief Cadastral Surveyor of Oregon