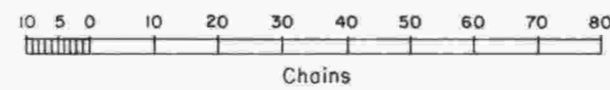
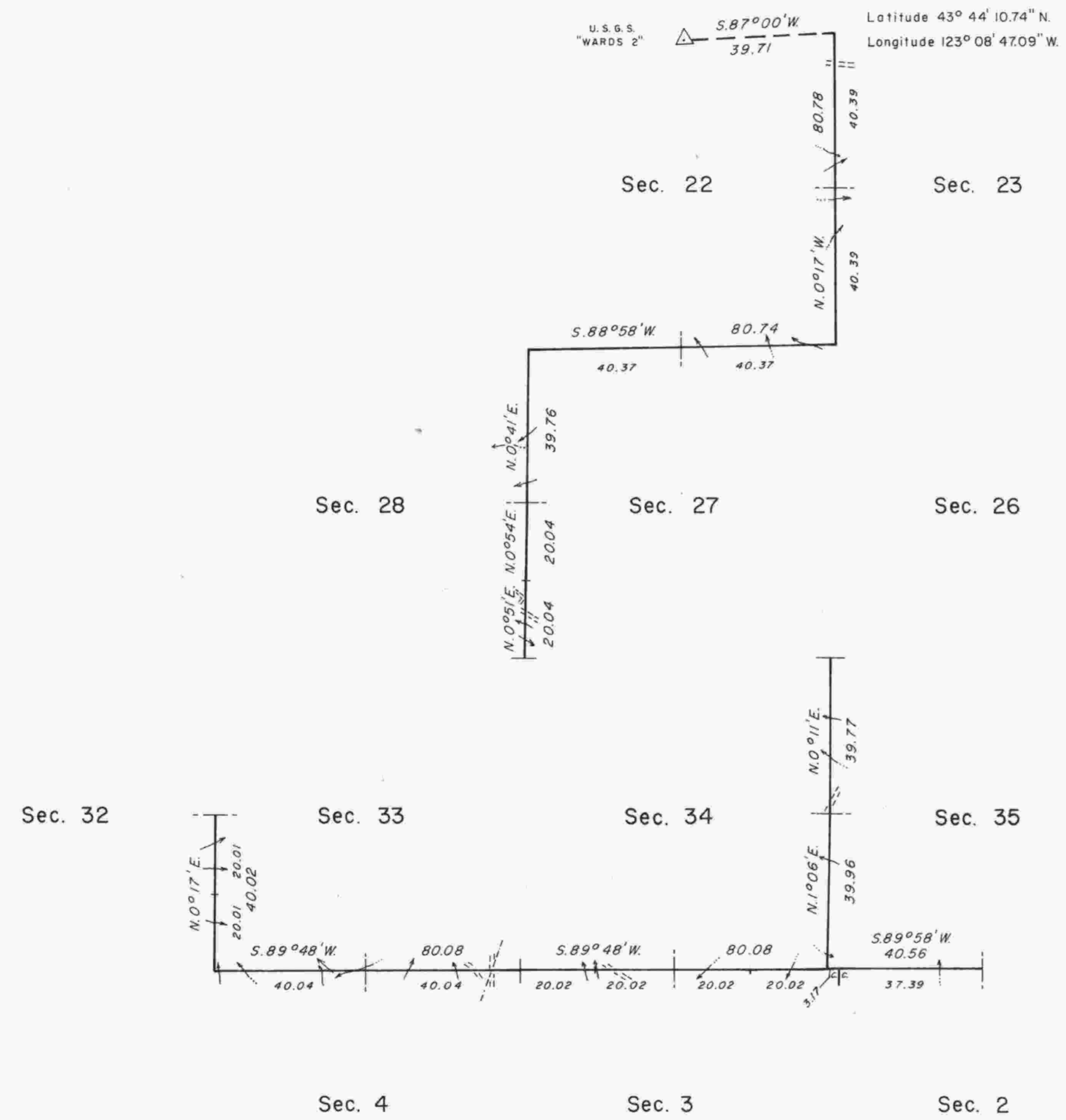


TOWNSHIP 21 SOUTH, RANGE 4 WEST, OF THE WILLAMETTE MERIDIAN, OREGON

DEPENDENT RESURVEY



A history of surveys is contained in the field notes.

This plat represents a dependent resurvey of a portion of the south boundary and subdivisional lines, T. 21 S., R. 4 W., Willamette Meridian, Oregon, designed to restore the corners in their true original locations according to the best available evidence.

The survey was executed by James E. Jelley and Wayne L. Rogers, Cadastral Surveyors, beginning July 15, 1980, and completed March 12, 1981, pursuant to Special Instructions dated June 5, 1980, for Group No. 1026, Oregon.

Timber in this area consists of fir, hemlock, yew, oak, madrone, cedar, pine, alder, maple, chinquapin, and ash.

UNITED STATES DEPARTMENT OF THE INTERIOR
BUREAU OF LAND MANAGEMENT
Portland, Oregon July 14, 1983

This plat is strictly conformable to the approved field notes, and the survey, having been correctly executed in accordance with the requirements of law and the regulations of this Bureau, is hereby accepted.

For the Director

William W. Glenn

Chief Cadastral Surveyor of Oregon