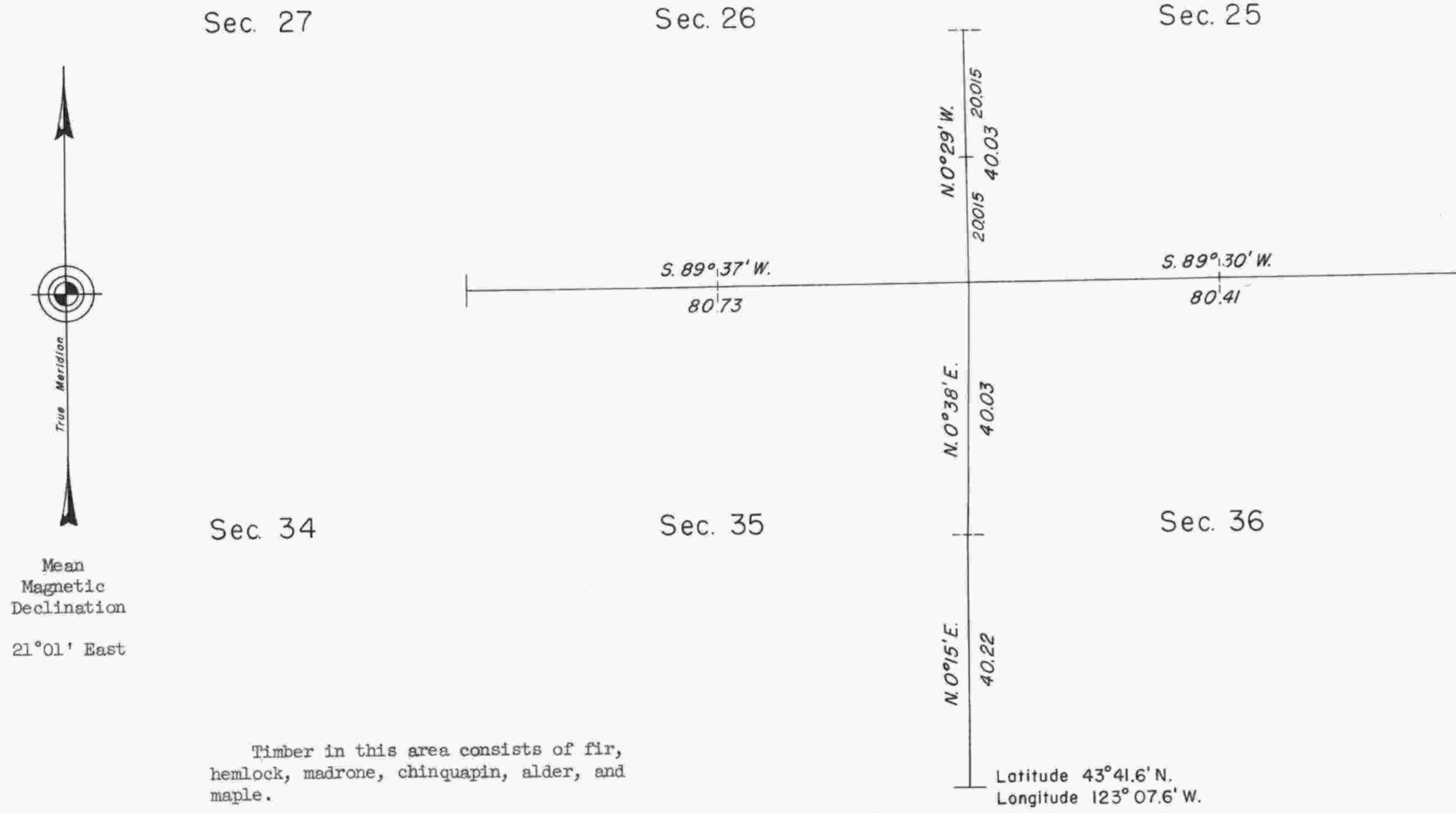
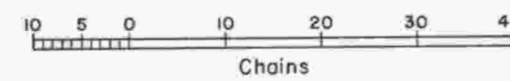


TOWNSHIP 21 SOUTH, RANGE 4 WEST, OF THE WILLAMETTE MERIDIAN, OREGON.
DEPENDENT RESURVEY



Timber in this area consists of fir, hemlock, madrone, chinquapin, alder, and maple.



This plat represents a retracement and reestablishment of a portion of the subdivisional lines designed to restore the corners in their true original location according to the best available evidence.

East boundary surveyed by James E. Freeman in 1851.

South boundary surveyed by Harvey Gordon and Charles T. Gardner in 1855.

Subdivisional lines surveyed by Harvey Gordon and Charles T. Gardner in 1856.

Dependent resurvey of a portion of the subdivisional lines executed by Lynn M. Roseberry April 16 to May 2, 1958, under special and supplemental instructions dated April 15 and 16, 1958, which provide for the surveys included under Group 398, Oregon.

UNITED STATES DEPARTMENT OF THE INTERIOR
BUREAU OF LAND MANAGEMENT
Washington, D. C. June 15, 1959

This plat is strictly conformable to the approved field notes, and the survey, having been correctly executed in accordance with the requirements of law and the regulations of this Bureau, is hereby accepted.

For the Director

Carl G. Harrington
Cadastral Engineering Staff Officer

K.R.H.