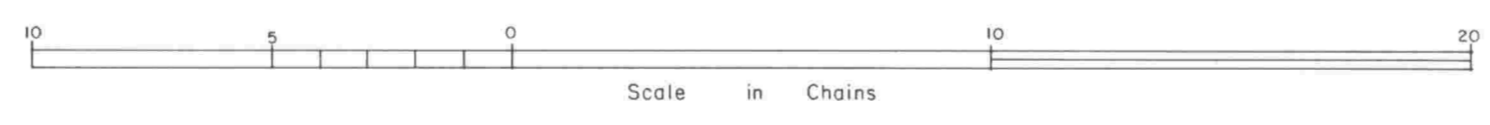
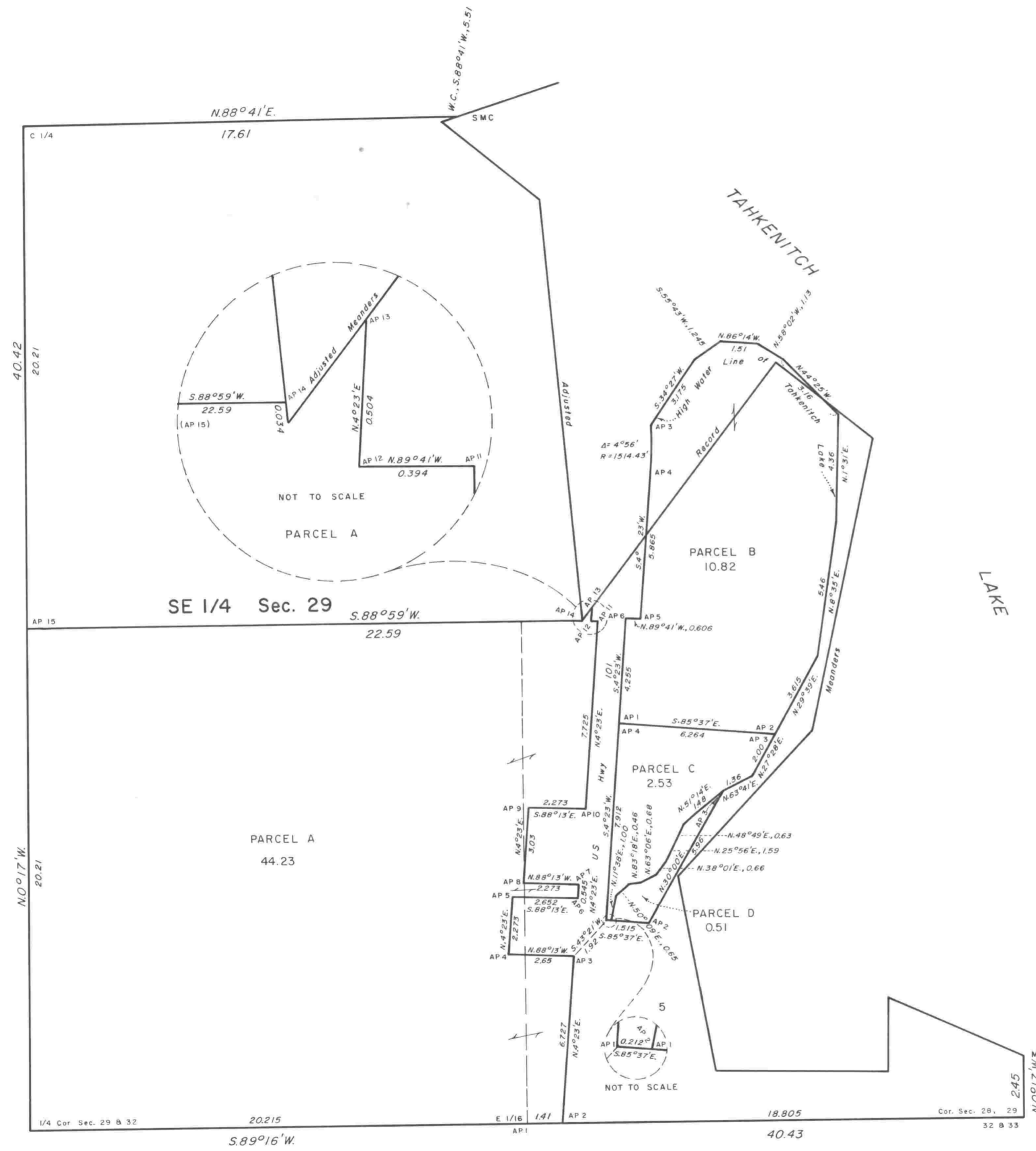
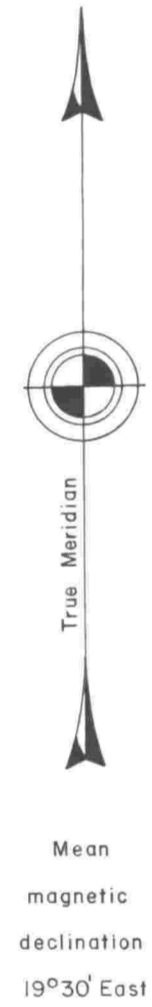


TOWNSHIP 20 SOUTH, RANGE 12 WEST, OF THE WILLAMETTE MERIDIAN, OREGON.

DEPENDENT RESURVEY, RETRACEMENT, SUBDIVISION OF SECTIONS 3,4,8,17,20,29, AND 32, AND SURVEY



UNITED STATES DEPARTMENT OF THE INTERIOR
 BUREAU OF LAND MANAGEMENT
 Portland, Oregon January 27, 1984

This plat is strictly conformable to the approved field notes, and the survey, having been correctly executed in accordance with the requirements of law and the regulations of this Bureau, is hereby accepted.

For the Director

William W. Glenn
 Chief Cadastral Surveyor of Oregon