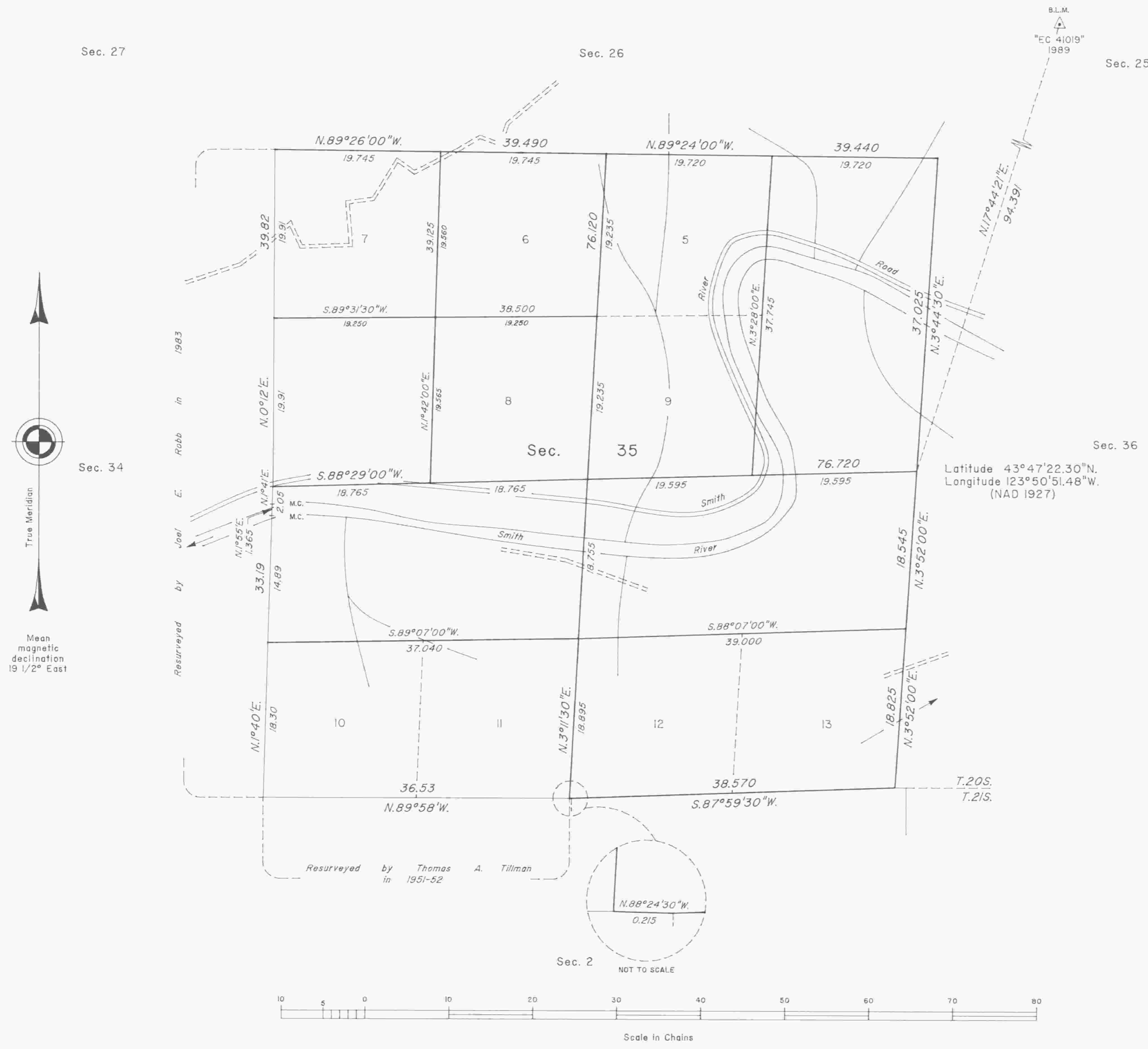


# TOWNSHIP 20 SOUTH, RANGE 10 WEST, OF THE WILLAMETTE MERIDIAN, OREGON

## DEPENDENT RESURVEY AND SUBDIVISION OF SECTION 35



A history of surveys is contained in the field notes.

This plat represents a dependent resurvey of a portion of the south boundary and subdivisional lines, and the subdivision of section 35, T. 20 S., R. 10 W., Willamette Meridian, Oregon.

The lottings and areas are as shown on the plats approved September 28, 1867 and April 19, 1894, and the plat accepted March 18, 1954.

The survey was executed by Harvey E. Wofford, Cadastral Surveyor, beginning October 11, 1988, and completed June 13, 1989, pursuant to Special Instructions dated September 28, 1988, under Group Number 1468, Oregon.

Timber in this area consists of fir, hemlock, cedar, maple, myrtle, cascara and alder.

Latitude 43°47'22.30"N.  
Longitude 123°50'51.48"W.  
(NAD 1927)

UNITED STATES DEPARTMENT OF THE INTERIOR  
BUREAU OF LAND MANAGEMENT

Portland, Oregon December 15, 1993

This plat is strictly conformable to the approved field notes, and the survey, having been correctly executed in accordance with the requirements of law and the regulations of this Bureau, is hereby accepted.

For the Director

*Wayne M. Gardner*

Chief Cadastral Surveyor of Oregon