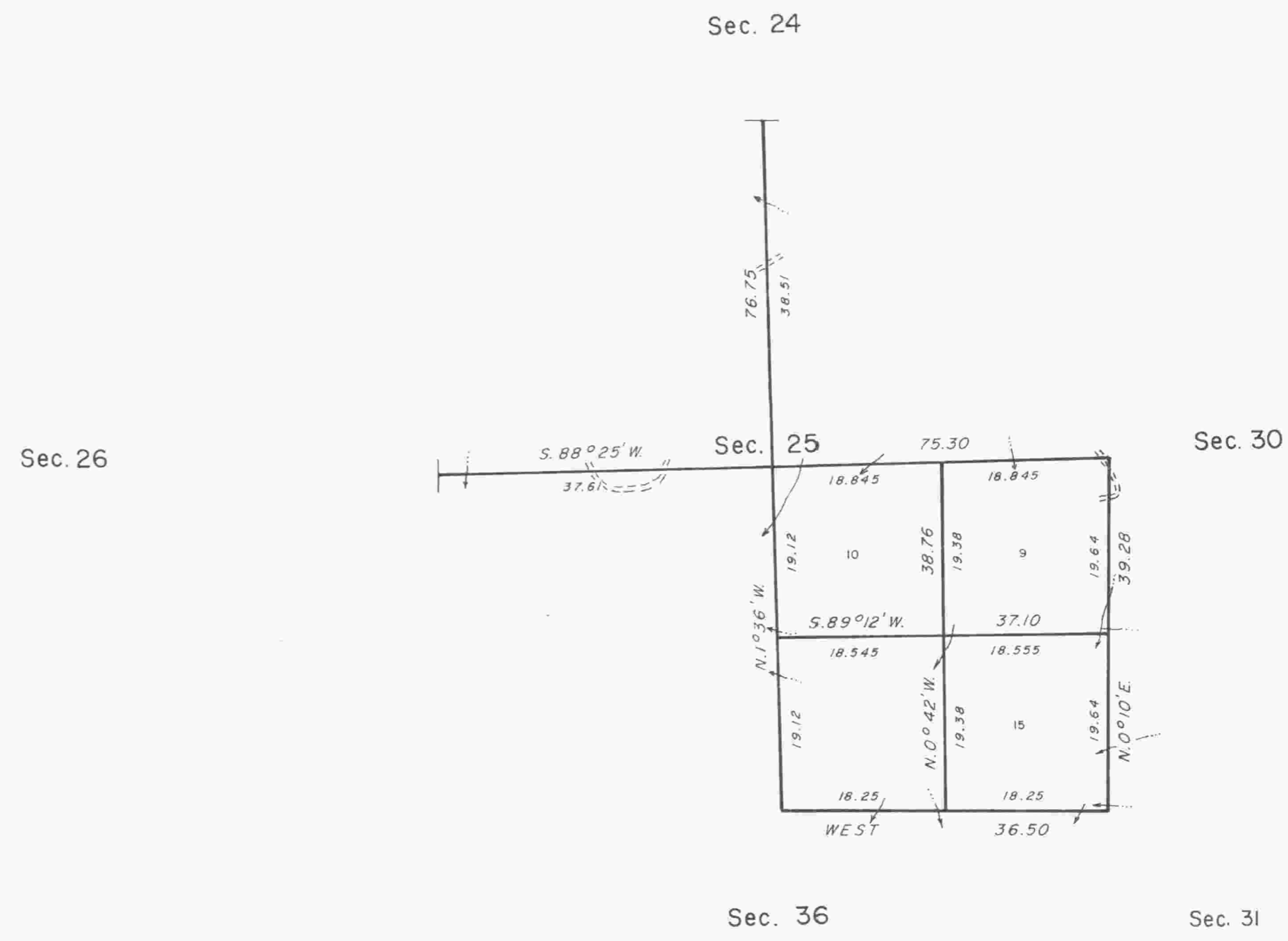
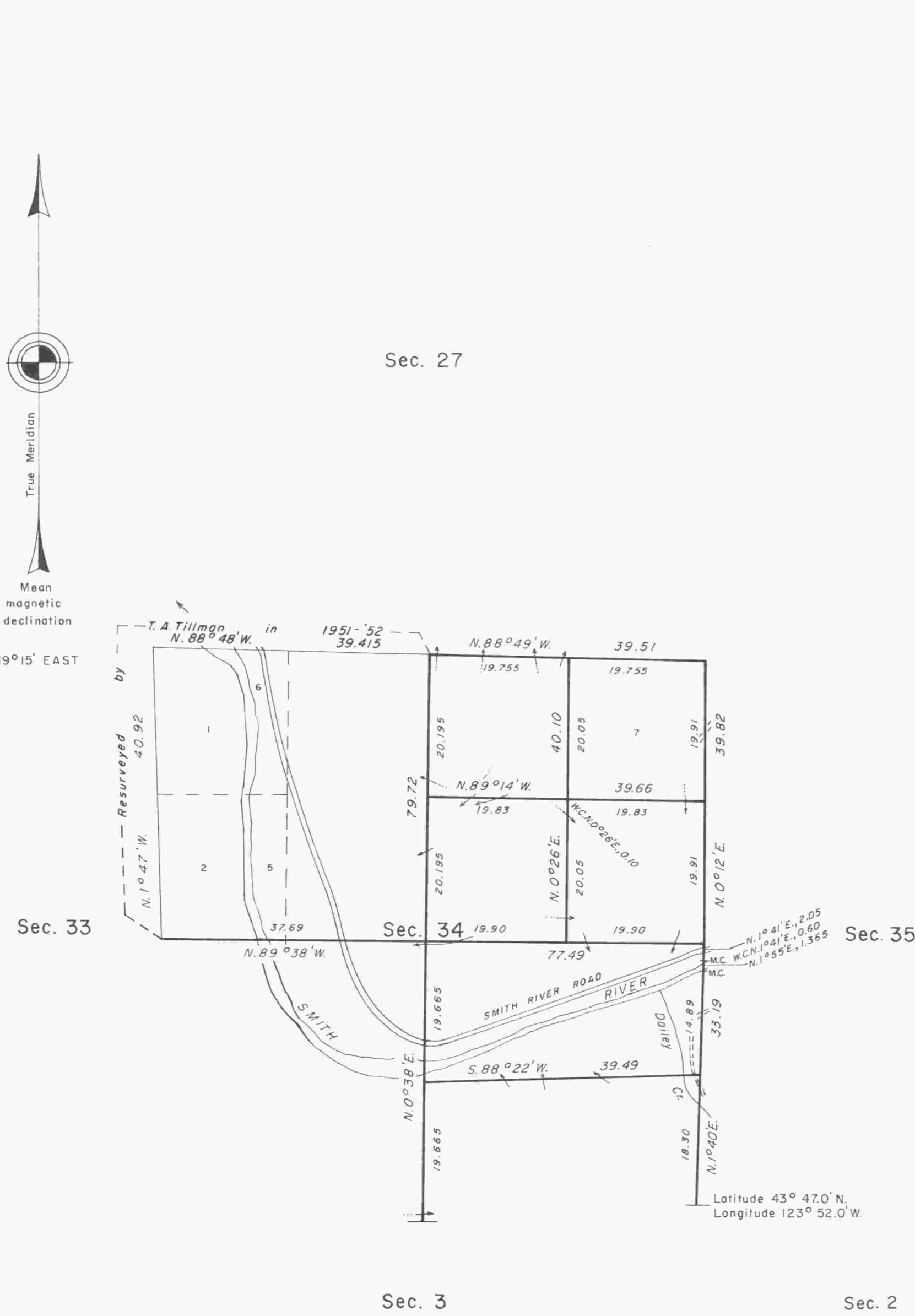


TOWNSHIP 20 SOUTH, RANGE 10 WEST, OF THE WILLAMETTE MERIDIAN, OREGON

DEPENDENT RESURVEY AND SUBDIVISION OF SECTIONS



19°15' EAST



A history of surveys is contained in the field notes.

This plat represents a dependent resurvey of a portion of the east boundary and subdivisional lines, T. 20 S., R. 10 W., Willamette Meridian, Oregon, designed to restore the corners in their true original locations according to the best available evidence, and the subdivision of sections 25 and 34.

The lottings and areas are as shown on the plats approved September 28, 1867 and April 19, 1894, and the plat accepted March 18, 1954.

The survey was executed by Joel E. Robb, Cadastral Surveyor, beginning September 12, 1983, and completed December 15, 1983, pursuant to Special Instructions dated July 18, 1983, under Group Number 1168, Oregon.

Timber in this area consists of fir, cedar, alder, maple, and hemlock.

UNITED STATES DEPARTMENT OF THE INTERIOR
BUREAU OF LAND MANAGEMENT
Portland, Oregon November 1, 1985

This plat is strictly conformable to the approved field notes, and the survey, having been correctly executed in accordance with the requirements of law and the regulations of this Bureau, is hereby accepted.

For the Director

William W. Glenn

Chief Cadastral Surveyor of Oregon