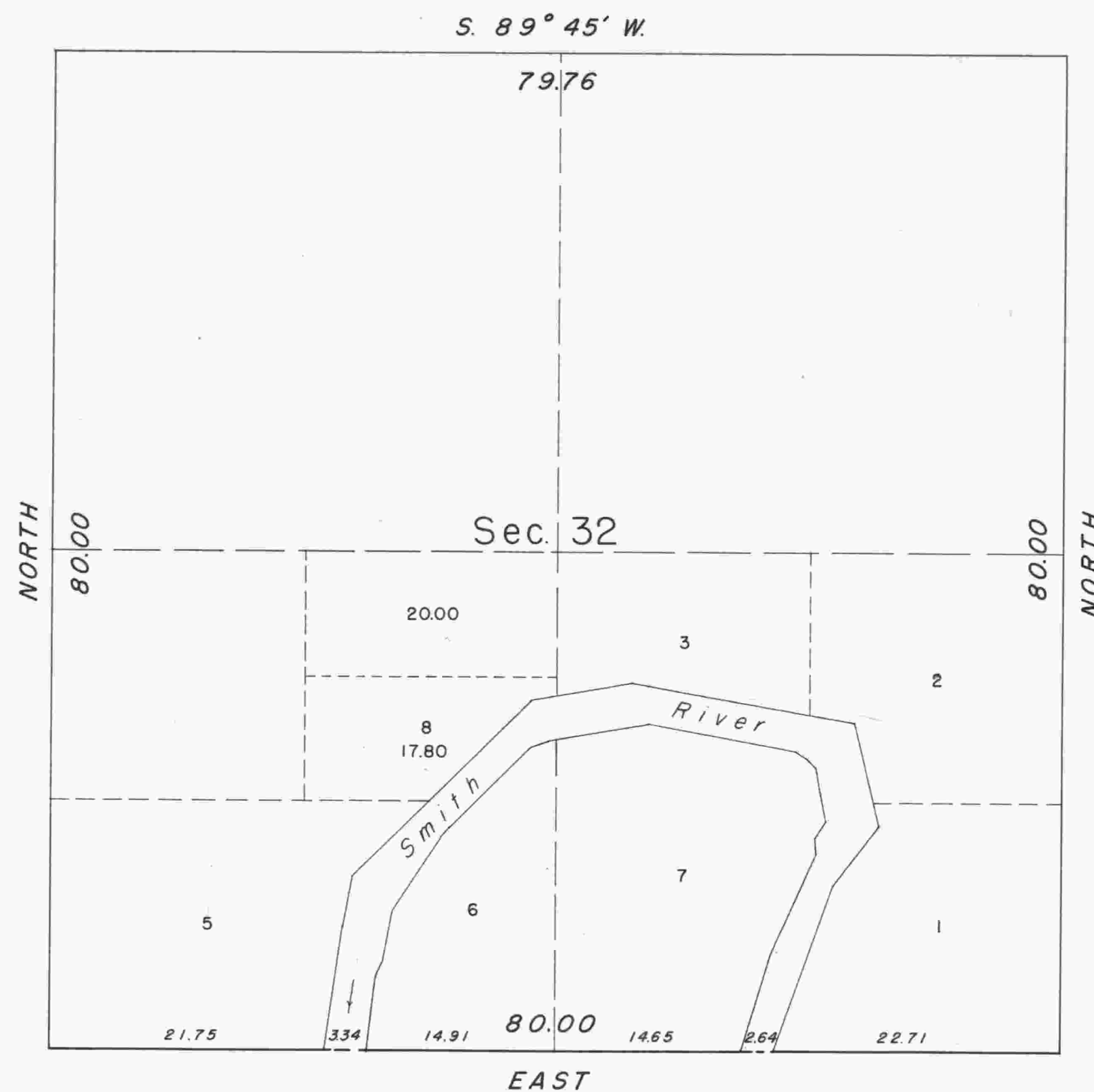
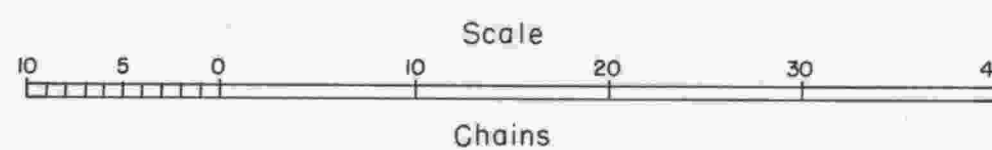


TOWNSHIP 20 SOUTH, RANGE 10 WEST, OF THE WILLAMETTE MERIDIAN, OREGON.
 SUPPLEMENTAL PLAT OF SECTION 32.



This plat, showing a subdivision of original lot 4, sec. 32, T. 20 S., R. 10 W., Willamette Meridian, Oregon, is based upon the plat approved September 28, 1867.

UNITED STATES DEPARTMENT OF THE INTERIOR
 BUREAU OF LAND MANAGEMENT
 Washington, D. C., June 12, 1953

This plat, showing amended lottings, is based upon the official record and, having been correctly prepared in accordance with the regulations, is hereby accepted.

For the Administrator

Ronald O. Clement

Assistant Chief, Division of
 Cadastral Engineering