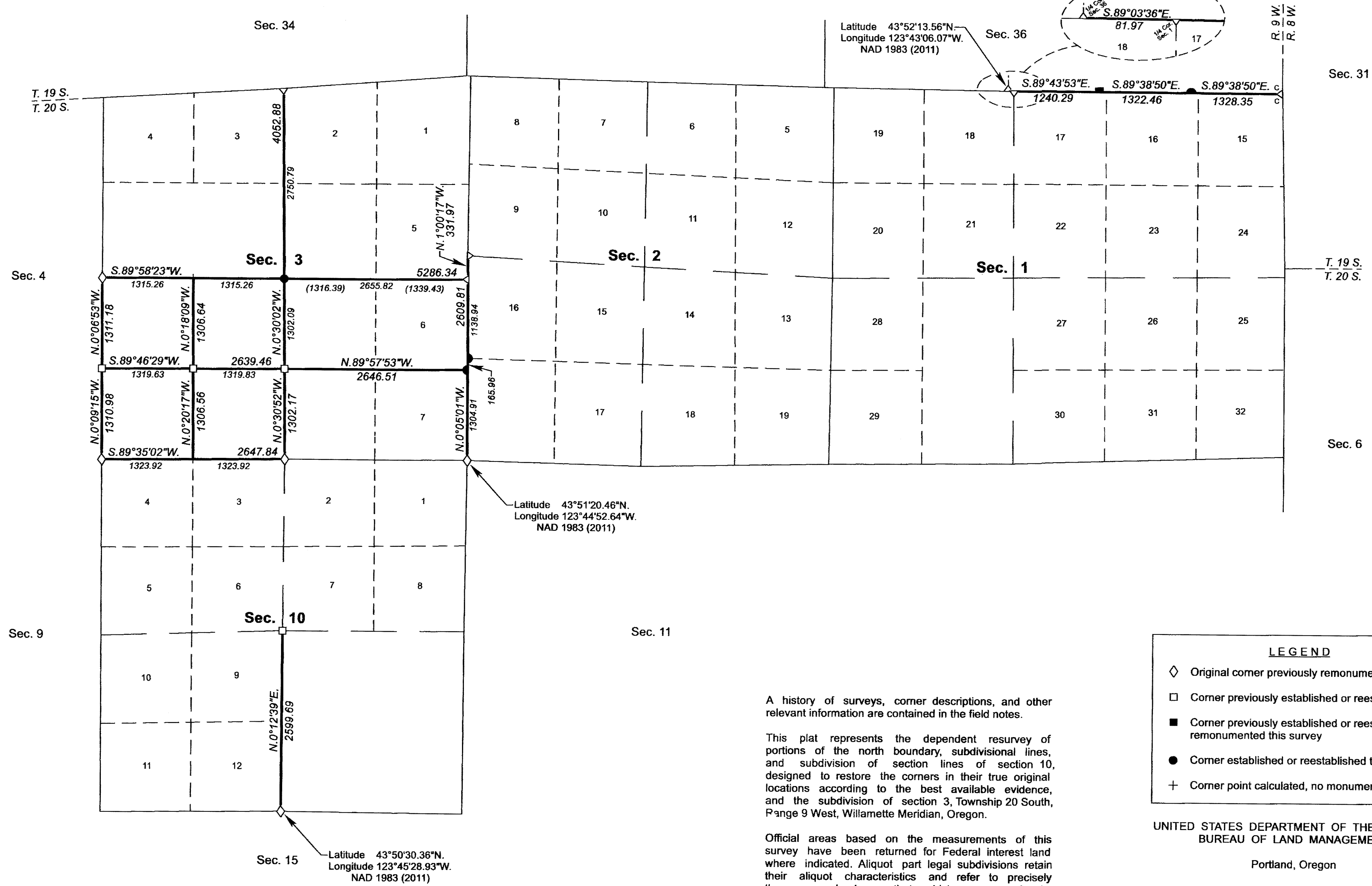


TOWNSHIP 20 SOUTH, RANGE 9 WEST, OF THE WILLAMETTE MERIDIAN, OREGON

DEPENDENT RESURVEY AND SUBDIVISION OF SECTION 3

FILED
Date: 1/2/2019 By: JC
This survey consists of:
Map: T20-9W 2019-1
Narrative: VOL 59 PAGES
Corner Rpt: 23599-23614
DOUGLAS COUNTY
SURVEYOR



OFFICIALLY FILED: 10/3/2018

Latitude 43°51'20.46"N.
Longitude 123°44'52.64"W.
NAD 1983 (2011)

Latitude 43°52'13.56"N.
Longitude 123°43'06.07"W.
NAD 1983 (2011)

Latitude 43°50'30.36"N.
Longitude 123°45'28.93"W.
NAD 1983 (2011)

LEGEND

- ◊ Original corner previously remonumented
- Corner previously established or reestablished
- Corner previously established or reestablished; remonumented this survey
- Corner established or reestablished this survey
- + Corner point calculated, no monument set

UNITED STATES DEPARTMENT OF THE INTERIOR
BUREAU OF LAND MANAGEMENT
Portland, Oregon

This plat is strictly conformable to the approved field notes, and the survey, having been correctly executed in accordance with the requirements of law and the regulations of this Bureau, is hereby accepted.

For the Director
Mary J. M. Hartz
Chief Cadastral Surveyor of Oregon

July 2, 2018
Date

A history of surveys, corner descriptions, and other relevant information are contained in the field notes.

This plat represents the dependent resurvey of portions of the north boundary, subdivisional lines, and subdivision of section lines of section 10, designed to restore the corners in their true original locations according to the best available evidence, and the subdivision of section 3, Township 20 South, Range 9 West, Willamette Meridian, Oregon.

Official areas based on the measurements of this survey have been returned for Federal interest land where indicated. Aliquot part legal subdivisions retain their aliquot characteristics and refer to precisely the same land as that which was previously identified by its original survey or description. A lot can only be subdivided by survey or supplemental plat. Except as indicated hereon, the lottings and areas are as shown on the plats approved May 6, 1893, and June 30, 1922, and the plat accepted March 23, 1960.

Survey executed by Jason A. Lightbown, Cadastral Surveyor, beginning June 27, 2016, and completed October 24, 2016, pursuant to special instructions approved June 21, 2016, for Group No. 2841, Oregon.

LEGAL SUBDIVISION	OFFICIAL ACRES
SECTION 3	
NE1/4 SW1/4	39.45
NW1/4 SW1/4	39.59
TOTAL AREA	79.04
FEDERAL INTEREST LAND RESURVEYED	

