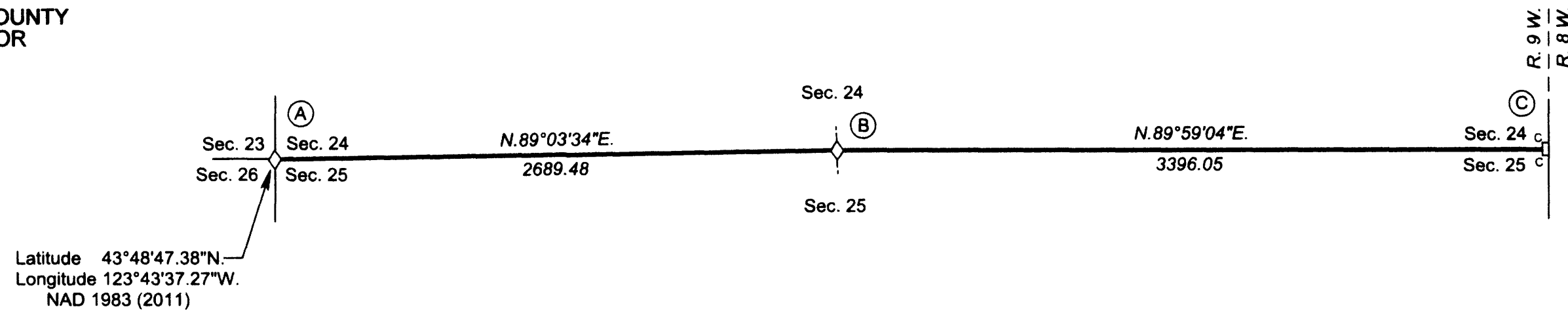


OFFICIALLY FILED: 12/19/2014

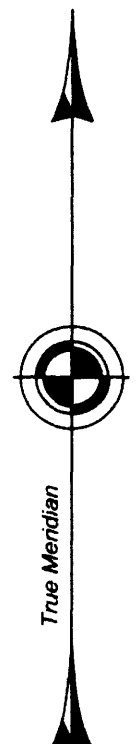
FILED
 Date: 12/29/2014 By: JC
 This survey consists of:
 Map: T20S R9W 2014-1
 Narrative: VOL 58 PGS 23070
 Corner Rpt: THIS PLAT REPRESENTS THE ENTIRE RECORD OF THE DEPENDENT RESURVEY
 DOUGLAS COUNTY SURVEYOR

TOWNSHIP 20 SOUTH, RANGE 9 WEST, OF THE WILLAMETTE MERIDIAN, OREGON

RETRACEMENT



Latitude 43°48'47.38"N
 Longitude 123°43'37.27"W
 NAD 1983 (2011)



(A) The cor. of secs. 23, 24, 25, and 26, monumented with an iron post, 2 ins. diam., firmly set, projecting 1 in. above ground, with a brass cap mkd.

T 20 S	
R 9 W	
S 23	S 24
S 26	S 25
1954	

from which the remains of the bearing trees mkd. by Tillman and Gawron in 1953-54

A decayed fir stump, 16 ins. diam., bears N. 51 1/4° E., 15.3 ft. dist., with a decayed healed blaze.

A fir, 43 ins. diam., bears S. 23° E., 19.1 ft. dist., with a healed blaze.

A decayed fir stump, size indeterminate, bears S. 70° W., 31.0 ft. dist., no marks visible.

A fir, 37 ins. diam., bears N. 67° W., 6.6 ft. dist., with a healed blaze.

and the bearing trees mkd. by Forkner in 2006-09

An alder, 11 ins. diam., bears N. 73° E., 30.9 ft. dist., with scribe marks T20S R9W S24 BT visible on bark.

A fir, 30 ins. diam., bears S. 82 1/2° W., 32.6 ft. dist., with a healed blaze.

A steel fence post is alongside the iron post.

(B) The 1/4 sec. cor. of secs. 24 and 25, monumented with an iron post, 1 in. diam., firmly set, projecting 4 ins. above ground, with a brass cap mkd.

S 24
1/4
S 25
1954

from which the remains of an original bearing tree

A fir stump, 53 ins. diam., bears N. 55° W., 41.6 ft. dist., no marks visible.

and the bearing trees mkd. by Forkner in 2006-09

A fir, 26 ins. diam., bears N. 32° E., 21.5 ft. dist., with a healed blaze.

A fir, 20 ins. diam., bears S. 4 1/2° W., 20.7 ft. dist., with a healed blaze.

A steel fence post is alongside the iron post.

(C) The closing cor. of secs. 24 and 25, on the E. bdy. of the Tp., monumented with an iron post, 2 ins. diam., firmly set, projecting 10 ins. above ground, with a brass cap mkd.

T 20 S	T 20 S
S 24	S 19
CC	S 25
R 9 W	R 8 W
1954	

from which the bearing trees mkd. by Forkner in 2006-09

An alder, 20 ins. diam., bears S. 72 1/4° W., 31.9 ft. dist., with scribe marks T20S R9W S25 CC BT visible on bark.

A fir, 22 ins. diam., bears N. 70 1/4° W., 59.1 ft. dist., with a healed blaze.

From the corner
 S. 89° 59' 04" W., 90 ft. dist., Smith River Road, asphalt surface, 20 ft. wide, bears N. 50° E. and S. 50° W.

LEGEND

- ◇ Original corner previously remonumented
- Corner previously established or reestablished

This plat constitutes the entire record of the retracement of the line between sections 24 and 25, Township 20 South, Range 9 West, Willamette Meridian, Oregon.

A history of official surveys pertaining to this retracement is as follows:

In 1891, William Thiel, U.S. Deputy Surveyor, surveyed a portion of the subdivisional lines, as shown on the official plat of survey accepted May 6, 1893.

In 1953-54, Thomas A. Tillman and Joseph S. Gawron, Cadastral Engineers, resurveyed a portion of the subdivisional lines, as shown on the official plat of survey accepted March 23, 1960.

In 1967, William W. Glen and James E. Jelley, Cadastral Surveyors, remonumented certain original corners, as described in the official field notes approved March 3, 1977.

In 1967, William W. Glenn, C. Albert White, and James E. Jelley, Cadastral Surveyors, remonumented certain original corner points in Township 20 South, Range 8 West, as described in the official field notes approved March 3, 1977.

In 2006-09, Edith M. Forkner, Cadastral Surveyor, rehabilitated certain corner points, as described in the official field notes approved January 1, 2010.

In 2011, Edith M. Forkner, Cadastral Surveyor, resurveyed a portion of the subdivisional lines, as shown on the official plat of survey accepted July 6, 2012.

The directions of the lines are based on the true meridian as determined by direct solar observation and carried forward by sustained angulation using conventional survey techniques. All measurements along the lines were derived through the use of electronic measuring equipment. Measured distances and directions have been adjusted by computer software that incorporates a least squares adjustment routine. The adjusted mean bearings and mean horizontal ground elevation distances are reported to the nearest second and 0.01 foot.

The lines of the official original survey and resurveys were retraced and a search was made for all corners, lines, other calls of record, and, where available, collateral evidence of local surveys and corners. Identified corners were perpetuated in their original positions. The retracement data were thoroughly verified and only the true line field data are given hereon.

Only those lines bounding Federal interest land were blazed.

The geographic position shown hereon was determined by ties from temporary GPS control points, utilizing dual frequency, carrier phase GPS receivers, and processed using the National Geodetic Survey's Online Positioning User Service (OPUS).

The survey was executed in accordance with the specifications set forth in the Manual of Surveying Instructions (2009), and the special instructions approved April 28, 2010, for Group No. 2500, Administrative File No. 1306, Oregon, by Joseph M. Mannix, Cadastral Surveyor, beginning May 14, 2013, and completed May 30, 2013. He was assisted by Keith G. Felker and Jason H. Blum, Surveying Technicians, and Joshua C. Varland, Laborer.

UNITED STATES DEPARTMENT OF THE INTERIOR
 BUREAU OF LAND MANAGEMENT

Portland, Oregon

The survey represented by this plat, having been correctly executed in accordance with the requirements of law and the regulations of this Bureau, is hereby accepted.

For the Director
Mary J. M. Hart
 Chief Cadastral Surveyor of Oregon

October 6, 2014
 Date

I, Joseph M. Mannix, Cadastral Surveyor, HEREBY CERTIFY upon honor, that in pursuance of special instructions bearing the approval date of the 28th day of April, 2010, and the assignment instructions bearing the date of the 8th day of May, 2013, I have retraced the line between sections 24 and 25, Township 20 South, Range 9 West, Willamette Meridian, Oregon, which is represented upon this plat as having been executed by me and under my direction; and that said survey has been made in strict conformity with said special instructions, the Manual of Surveying Instructions, and in the specific manner described on this plat.

Joseph M. Mannix
 Cadastral Surveyor

SEP. 16, 2014
 Date

